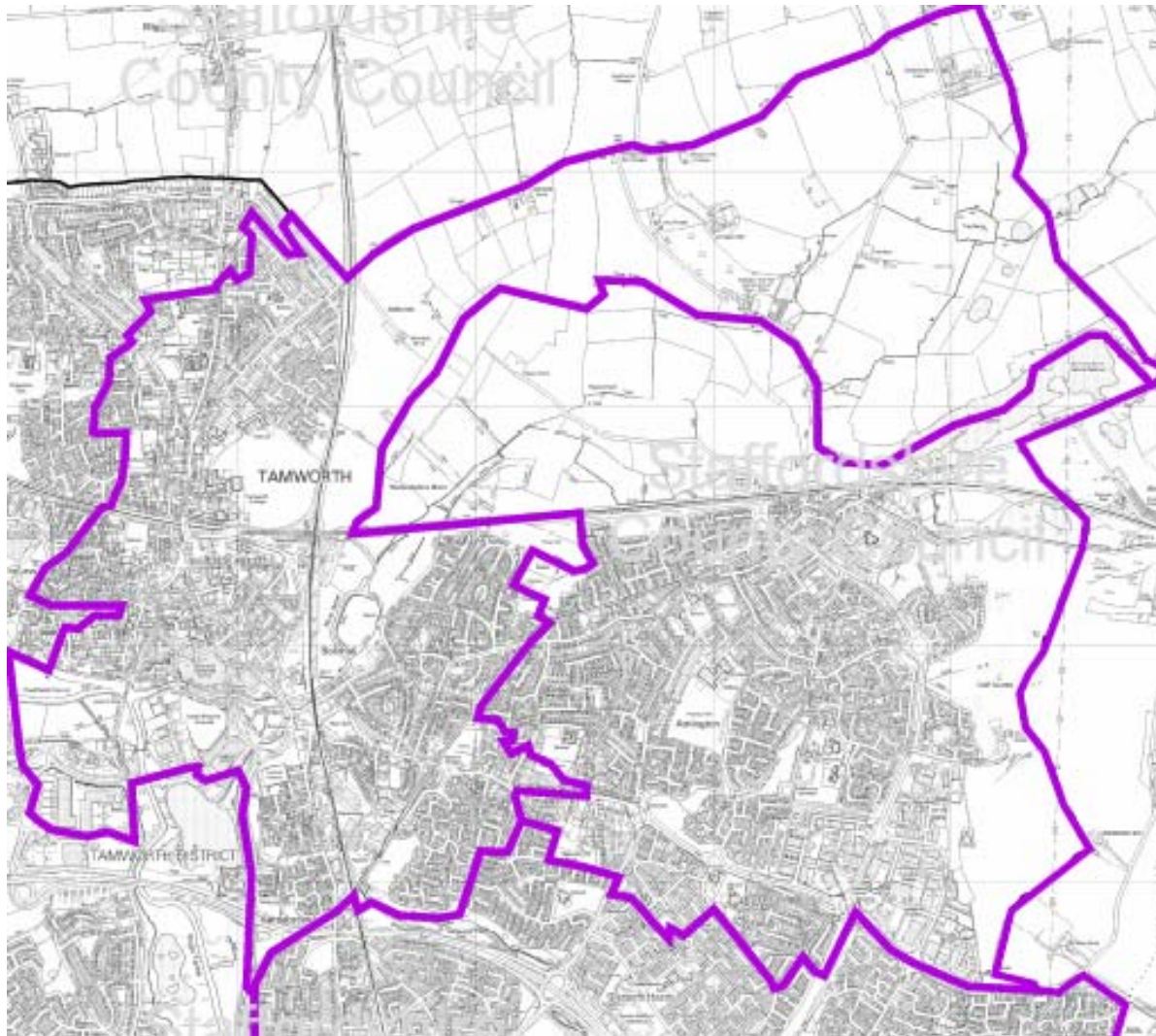


# Community and Learning Partnerships

Data Profile  
Tamworth T3



This map is reproduced from Ordnance Survey Material with the permission of Ordnance Survey on behalf of the controller of Her Majesty's Stationery Office (C) Crown Copyright. Unauthorised reproduction infringes Crown Copyright and may lead to prosecution or civil proceedings. Staffordshire County Council 100019422. 2005 Produced by the Educational Research Analysis Unit, Children and Life long Learning Directorate, Staffordshire County Council, 2005.

Produced by Educational Research & Analysis  
School Improvement Division  
Staffordshire County Council

**Staffordshire**  
County Council

# 2001 Census - Social Profile

## QEMs CLP

Population	Count	Percent	Index
Resident Population	13191		
Males	6395	48.5%	100
Females	6796	51.5%	100
People living in Households	13024	98.7%	101
People Living in Communal Establishment	168	1.3%	70

Age Profile	Count	Percent	Index
0-4	737	5.6%	94
5-14	1451	11.0%	85
15	121	0.9%	72
16-19	572	4.3%	88
20-29	1751	13.3%	105
30-44	2876	21.8%	96
45-59	2640	20.0%	106
60-74	1865	14.1%	107
75-84	888	6.7%	120
85+	287	2.2%	112

Households	Count	Percent	Index
Total Household Spaces	6000		
Occupied Household Spaces	5902	98.4%	102
Vacant Household Spaces	85	1.4%	45
Second Residences	13	0.2%	34
Average household size	2.21		94
All Single Person Households	1934	32.8%	109
All lone pensioner households	1007	17.1%	94
All pensioner households	1518	25.7%	108
Single Parent Households with dependent children	309	5.2%	82
Single Parent Households with non-dependent children	241	4.1%	134
All households with dependent children	1488	25.2%	86
Households with no employed adult and dependent children	219	3.7%	77
All households with 1 or more persons with Limiting Long-term Illness	2177	36.9%	110

Health and Caring	Count	Percent	Index
People not in good health	1517	11.5%	127
People with a Limiting Long-term Illness	2794	21.2%	118
People of working age with Limiting Long-term Illness	1192	9.0%	111
People who provide unpaid care	1433	10.9%	109
People who provide more than 50 hours of unpaid care	341	2.6%	127

Amenity	Count	Percent	Index
Overcrowded households	261	4.4%	62
No central heating	306	5.2%	61
No WC and bath/shower	12	0.2%	42

Ethnic Group	Count	Percent	Index
White	12978	98.4%	108
Mixed	87	0.7%	50
Indian	44	0.3%	16
Pakistani	12	0.1%	6
Bagladeshi	0	0.0%	0
Other Asian	10	0.1%	16
Black	32	0.2%	11
Chinese	16	0.1%	27
Other Ethnic Groups	13	0.1%	23

Religion	Count	Percent	Index
Christian	10193	77.3%	108
Buddhist	11	0.1%	29
Hindu	22	0.2%	15
Jewish	3	0.0%	4
Muslim	20	0.2%	5
Sikh	15	0.1%	17
Other Religion	39	0.3%	101
No Religion	1899	14.4%	99
Religion not Stated	982	7.4%	97

Dwelling Type	Count	Percent	Index
Detached	1175	19.6%	84
Semi-detached	2093	34.9%	106
Terraced	1346	22.4%	83
Purpose built flat	1069	17.8%	123
Flat in converted / shared house	196	3.3%	69
Flat in commercial building	70	1.2%	98
Caravan/Mobile home/Temporary	56	0.9%	214

Tenure	Count	Percent	Index
Owner Occupied	4038	68.4%	101
Shared Ownership	3	0.1%	8
Local Authority rented	987	16.7%	127
Housing Association / Registered Social Landlord	298	5.0%	83
Privately rented	401	6.8%	77
Other rented	170	2.9%	90

Car Ownership	Count	Percent	Index
Households with no car	1758	29.8%	111
Households with 1 car	2608	44.2%	101
Households with 2 cars	1263	21.4%	91
Households with 3 or more cars	273	4.6%	78
Total number of cars in the area	6035		
Average no of cars per household	1.02		93

As a result of rounding some figures may not always equal the total for this area.

Census output is Crown Copyright and is reproduced with the permission of the Controller of HMSO and the Queen's Printer for Scotland

Source: 2001 Census Key Statistics

An Index has been created to compare the above area with England. The scores for England always equals 100, therefore a score of less than 100 indicates fewer people or households in that category for the area compared with England. A score over 100 indicates more people or households in that category for the area compared with England.

Produced by Research Unit, Development Services Department, Staffordshire County Council

Further details available by telephoning 01785 277359 or email mark.sproston@staffordshire.gov.uk

## 2001 Census - Economic Profile

### QEMs CLP

Population <sup>1</sup>	Count	Percent	Index
All people aged 16-74	9704		
All males aged 16-74	4853	50.0%	102
All females aged 16-74	4853	50.0%	98
All people in employment	6323	65.2%	103
All males in employment	3467	71.4%	103
All females in employment	2845	58.6%	103

Economic Activity <sup>1</sup>	Count	Percent	Index
All people economically active	6652	68.5%	103
All people economically inactive	3052	31.5%	95

#### All People Economically Active

Employees - Full-time	4440	66.7%	109
Employees - Part-time	1143	17.2%	97
Self Employed	567	8.5%	69
Unemployed	310	4.7%	93
Full-time Student	192	2.9%	75

#### All People Economically Inactive

Retired	1370	44.9%	110
Full-time student	250	8.2%	58
Looking after family or home	594	19.5%	99
Permanently sick or disabled	604	19.8%	124
Other	234	7.7%	82

#### Industry of Employment <sup>2</sup>

Industry of Employment <sup>2</sup>	Count	Percent	Index
Agriculture, Hunting, Forestry and Fishing	34	0.5%	36
Mining and Quarrying	24	0.4%	154
Manufacturing	1497	23.7%	160
Electricity, gas and water supply	38	0.6%	84
Construction	400	6.3%	94
Wholesale and Retail trade	1151	18.2%	108
Hotels and Catering	320	5.1%	107
Transport, storage and communication	563	8.9%	126
Financial, Real Estate and Business Activity	859	13.6%	75
Public Administration and Defence	259	4.1%	72
Education	408	6.5%	83
Health and Social Work	477	7.5%	71
Other	293	4.6%	89

#### Qualifications <sup>1</sup>

Qualifications <sup>1</sup>	Count	Percent	Index
No Qualifications	3373	34.8%	120
Level 1 Qualifications	1738	17.9%	108
Level 2 Qualifications	1951	20.1%	104
Level 3 Qualifications	677	7.0%	84
Level 4 or 5 Qualifications	1218	12.6%	63
Other Qualification / Level Unknown	747	7.7%	111

#### Unemployed <sup>1</sup>

All unemployed	310		
Aged 16-24	83	26.8%	104
Aged 50+	65	21.0%	113
Long-term Unemployed	72	23.2%	77

Occupation Groups <sup>2</sup>	Count	Percent	Index
Managers and Senior Officials	880	13.9%	91
Professional	537	8.5%	76
Assoc Professional and technical	747	11.8%	85
Administrative and Secretarial	827	13.1%	98
Skilled Trade	775	12.3%	106
Personal Services	381	6.0%	88
Sales and Customer Service	478	7.6%	99
Process, plant and machine operatives	778	12.3%	146
Elementary occupations	916	14.5%	123

#### Socio-Economic Class <sup>1</sup>

Socio-Economic Class <sup>1</sup>	Count	Percent	Index
Large Employers and Higher Managerial	290	3.0%	85
Higher Professional	340	3.5%	69
Lower Managerial and Professional	1734	17.9%	95
Intermediate	894	9.2%	97
Small Employers and own account workers	522	5.4%	77
Lower Supervisory and Technical	906	9.3%	131
Semi-routine	1343	13.8%	119
Routine	1192	12.3%	136
Never worked	163	1.7%	62
Long-term unemployed	72	0.7%	73
Full-time Student	434	4.5%	64
Not Classified	1814	18.7%	106

#### Hours Worked (Week) <sup>2</sup>

Hours Worked (Week) <sup>2</sup>	Count	Percent	Index
Males part-time < 15 hours	75	2.2%	62
Males part-time 16-30 hours	147	4.2%	69
Males full-time 31-48 hours	2402	69.3%	105
Males full-time > 49 hours	843	24.3%	100
Females part-time < 15 hours	358	12.6%	90
Females part-time 16-30 hours	805	28.3%	100
Females full-time 31-48 hours	1512	53.1%	105
Females full-time >49 hours	170	6.0%	86

#### Travel to Work <sup>2</sup>

Travel to Work <sup>2</sup>	Count	Percent	Index
Work mainly from home	464	7.3%	80
Train, Light Rail, Tram, Metro, Underground	183	2.9%	39
Bus	365	5.8%	77
Motorcycle	56	0.9%	80
Car (as driver or passenger)	4224	66.8%	109
Taxi	53	0.8%	161
Bicycle	193	3.1%	108
Walk	765	12.1%	121
Other	18	0.3%	61

Note: 1 = People aged 16-74  
2 = People Aged 16-74 in employment

As a result of rounding some figures may not always equal the total for this area.

Census output is Crown Copyright and is reproduced with the permission of the Controller of HMSO and the Queen's Printer for Scotland

Source: 2001 Census Key Statistics

An Index has been created to compare the above area with England. The scores for England always equals 100, therefore a score of less than 100 indicates fewer people in that category for the area compared with England. A score over 100 indicates more people in that category for the area compared with England.

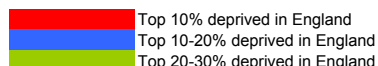
Produced by Research Unit, Development Services Department, Staffordshire County Council

Further details available by telephoning 01785 277359 or email mark.sproston@staffordshire.gov.uk

# Indices of Multiple Deprivation 2007

## Understanding this information

The colour shading highlights where the LSOA is in the top 10%, 20% or 30% most deprived areas in England for that measure of Deprivation.



The LSOAs are ranked here according to their overall multiple deprivation score: most deprived to least deprived. The national ranking (out of 32,482) is shown in the top table, where 1=most deprived and 32,482=least deprived. The bottom table replicates the information but putting the ranking into a percentage, so that it can be seen where the LSOA falls within the whole country. The deprivation domain titles have been abbreviated.

Ward Name	LOWERSOA	LOMD	Income	Employment	Health	Education	Housing	Crime	Living Environment
Castle	E01029835	4619	5183	2722	4364	8189	20251	2448	9896
Bolehall	E01029830	9815	12066	8054	8013	7137	25629	6612	13321
Bolehall	E01029834	10026	8502	9152	9865	4283	30175	11075	21894
Bolehall	E01029831	11024	11121	11071	9769	7736	25189	7378	13389
Spital	E01029851	13500	12191	12447	12907	11786	28639	10309	11694
Castle	E01029838	14268	19765	18935	16125	12065	15861	1642	14342
Spital	E01029853	17251	12761	16083	12490	13129	29495	22946	19138
Bolehall	E01029833	19212	23241	17276	16809	15729	22090	5883	25358
Spital	E01029854	29261	30666	22316	22127	20925	27018	27046	30764

Ward Name	LOWERSOA	LOMD	Income	Employment	Health	Education	Housing	Crime	Living Environment
Castle	E01029835	14.2%	16.0%	8.4%	13.4%	25.2%	62.3%	7.5%	30.5%
Bolehall	E01029830	30.2%	37.1%	24.8%	24.7%	22.0%	78.9%	20.4%	41.0%
Bolehall	E01029834	30.9%	26.2%	28.2%	30.4%	13.2%	92.9%	34.1%	67.4%
Bolehall	E01029831	33.9%	34.2%	34.1%	30.1%	23.8%	77.5%	22.7%	41.2%
Spital	E01029851	41.6%	37.5%	38.3%	39.7%	36.3%	88.2%	31.7%	36.0%
Castle	E01029838	43.9%	60.8%	58.3%	49.6%	37.1%	48.8%	5.1%	44.2%
Spital	E01029853	53.1%	39.3%	49.5%	38.5%	40.4%	90.8%	70.6%	58.9%
Bolehall	E01029833	59.1%	71.6%	53.2%	51.7%	48.4%	68.0%	18.1%	78.1%
Spital	E01029854	90.1%	94.4%	68.7%	68.1%	64.4%	83.2%	83.3%	94.7%

## Background to the Indices of Multiple Deprivation 2007

The English Indices of Deprivation 2007 (ID 2007) are the Government's official measure of multiple deprivation at small area level. The 2007 Indices update information provided in the IMD 2004.

The IMD 2007 provides a relative ranking of areas across England according to their level of deprivation.

The Index of Multiple Deprivation 2007 (IMD 2007) is based on the small area geography known as Lower Super Output Areas (LSOAs). LSOAs have between 1000 and 3000 people living in them with an average population of 1500 people. In most cases, these are smaller than wards, thus allowing the identification of small pockets of deprivation.

The IMD brings together 37 different indicators which cover specific aspects or dimensions of deprivation: Income, Employment, Health and Disability, Education, Skills and Training, Barriers to Housing and Services, Living Environment and Crime. These are weighted and combined to create the overall IMD 2007.

The majority of the data underpinning the IMD 2007 represents 2005 although some data covers a number of years, for example an average of 2003-2005.

This is taken from the Guidance for Using the English Indices of Deprivation 2007 produced by Communities and Local Government: <http://www.communities.gov.uk/documents/communities/doc/615986>

## Foundation Stage Profile Attainment

The Foundation Stage Profile allocates a point score for each child in 13 areas of learning. The results below indicate the number and percentage of children who have achieved a score of 6 or above. This threshold has been chosen as it is the expected level of attainment as stipulated by the Department for Children, Schools and Families.

	National	County	District	2005		2006		2007		CLP - National	CLP - County	CLP - District	Trend
	2007 (%)	2007 (%)		Number	%	Number	%	Number	%	2007	2007	2007	2005-07
Personal, social and emotional development													
Dispositions and attitudes	87.0%	90.9%	92.3%	218	93.2%	206	90.0%	210	89.0%	2.0%	-1.9%	-3.3%	Decline
Social development	80.0%	86.4%	89.1%	198	84.6%	193	84.3%	203	86.0%	6.0%	-0.4%	-3.1%	
Emotional development	76.0%	84.4%	86.4%	197	84.2%	176	76.9%	193	81.8%	5.8%	-2.6%	-4.6%	
Communication, language and literacy													
Language for communication and thinking	78.0%	85.0%	83.8%	195	83.3%	191	83.4%	192	81.4%	3.4%	-3.6%	-2.4%	
Linking sounds and letters	65.0%	72.0%	64.9%	157	67.1%	149	65.1%	144	61.0%	-4.0%	-11.0%	-3.9%	Decline
Reading	69.0%	78.6%	76.9%	175	74.8%	173	75.5%	167	70.8%	1.8%	-7.8%	-6.1%	
Writing	58.0%	70.1%	65.0%	161	68.8%	142	62.0%	143	60.6%	2.6%	-9.5%	-4.4%	Decline
Mathematical development													
Calculating	87.0%	90.7%	89.9%	203	86.8%	208	90.8%	212	89.8%	2.8%	-0.9%	-0.1%	
Numbers as labels and for counting	70.0%	78.6%	80.0%	173	73.9%	183	79.9%	172	72.9%	2.9%	-5.7%	-7.1%	
Shapes, space and measures	80.0%	88.4%	88.7%	211	90.2%	209	91.3%	195	82.6%	2.6%	-5.8%	-6.1%	
Knowledge and understanding of the world	77.0%	85.8%	86.4%	202	86.3%	194	84.7%	187	79.2%	2.2%	-6.6%	-7.2%	Decline
Physical development	88.0%	92.1%	89.8%	215	91.9%	215	93.9%	207	87.7%	-0.3%	-4.4%	-2.1%	
Creative development	78.0%	84.7%	84.2%	154	65.8%	170	74.2%	176	74.6%	-3.4%	-10.1%	-9.6%	Increase
78 points and 6 or above in PSE and CLL Scales	45.0%	57.5%	53.2%	128	54.7%	113	49.3%	110	46.6%	1.6%	-10.9%	-6.6%	Decline

## Key Stage One to Four Attainment

The National Curriculum for Key Stage One through to Key Stage Four runs through Year 1 to Year 11. The expected level of attainment for Key Stage One is Level 2B or above, Key Stage Two is Level 4 or above, Key Stage 3 is Level 5 or above and at Key Stage 4 the new level of expected attainment is 5+ A\*-C including GCSE English and Mathematics. The results below indicate the number and percentage of children who have achieved these thresholds. These thresholds have been chosen as it is the expected level of attainment as stipulated by the Department for Children, Schools and Families.

	National	County	District	2005		2006		2007		CLP - National	CLP - County	CLP - District	Trend
	2007 (%)	2007 (%)		Number	%	Number	%	Number	%	2007	2007	2007	2005-07
KS1 Reading Level 2B+	71.0%	76.2%	72.7%	172	72.3%	159	66.5%	153	68.0%	-3.0%	-8.2%	-4.7%	
KS1 Writing Level 2B+	59.0%	65.2%	62.3%	151	63.4%	144	60.3%	128	56.9%	-2.1%	-8.3%	-5.4%	Decline
KS1 Mathematics Level 2B+	74.0%	78.1%	76.8%	181	76.1%	170	71.1%	163	72.4%	-1.6%	-5.7%	-4.4%	
KS2 English Level 4+	80.0%	81.0%	76.3%	160	75.1%	166	76.9%	153	81.0%	1.0%	0.0%	4.7%	Increase
KS2 Mathematics Level 4+	77.0%	78.0%	71.9%	149	70.0%	160	74.1%	138	73.0%	-4.0%	-5.0%	1.1%	
KS2 Science Level 4+	88.0%	90.0%	84.0%	171	80.3%	187	86.6%	158	83.6%	-4.4%	-6.4%	-0.4%	
KS3 English Level 5+	74.0%	77.0%	64.9%	179	71.3%	147	66.8%	160	70.2%	-3.8%	-6.8%	5.3%	
KS3 Mathematics Level 5+	76.0%	78.0%	72.9%	173	69.8%	151	68.6%	164	71.9%	-4.1%	-6.1%	-1.0%	
KS3 Science Level 5+	73.0%	75.0%	66.5%	157	62.5%	138	62.7%	143	63.0%	-10.0%	-12.0%	-3.5%	Increase
KS4 5 or more A*-C Grade	62.0%	60.0%	54.8%	108	49.5%	101	47.6%	143	59.1%	-2.9%	-0.9%	4.3%	
KS4 5 or more A*-C Grade including English & Maths	46.8%	45.8%	34.1%	86	39.4%	63	29.7%	87	36.0%	-10.8%	-9.8%	1.9%	
KS4 5 or more A*-G Grade	91.7%	93.2%	90.1%	204	93.6%	187	88.2%	177	73.1%	-18.6%	-20.1%	-17.0%	Decline
KS4 2 or more A*-C Grade in Science	50.3%	49.7%	36.6%	86	39.4%	69	32.5%	84	34.7%	-15.6%	-15.0%	-1.9%	

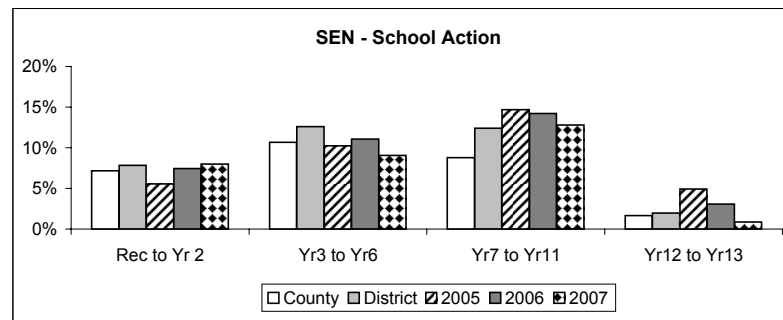
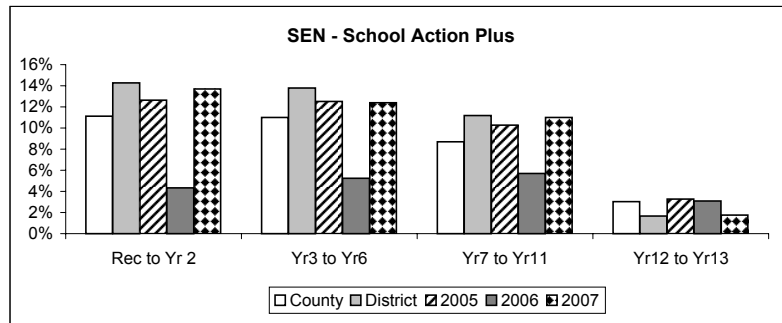
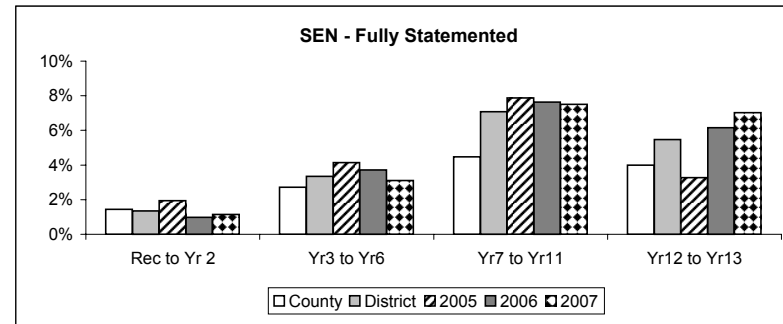
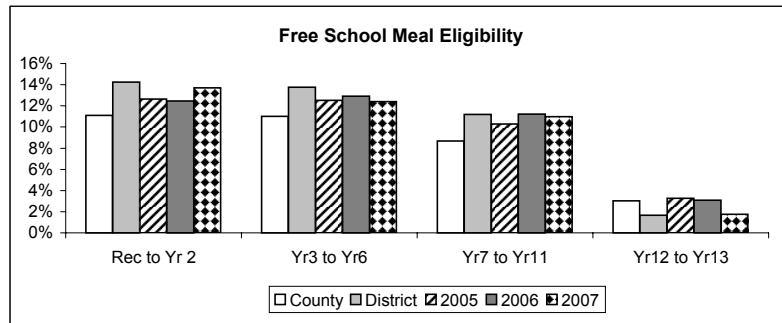
Source: Educational Research Analysis.

# Free School Meals and Special Educational Needs

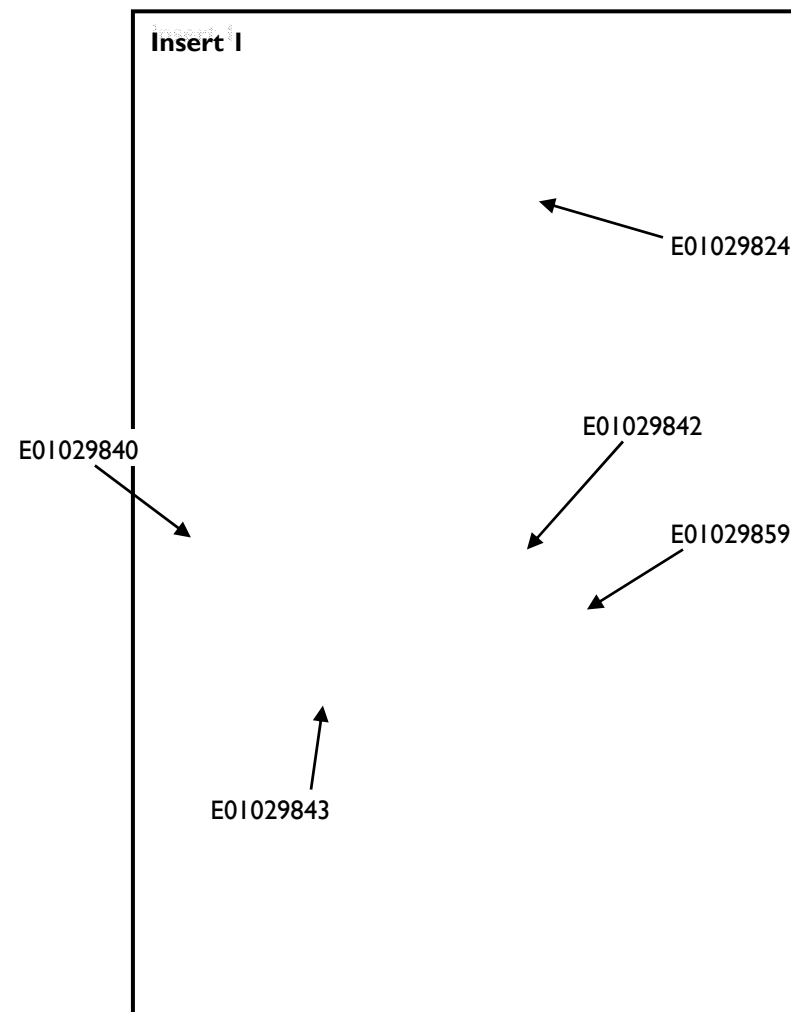
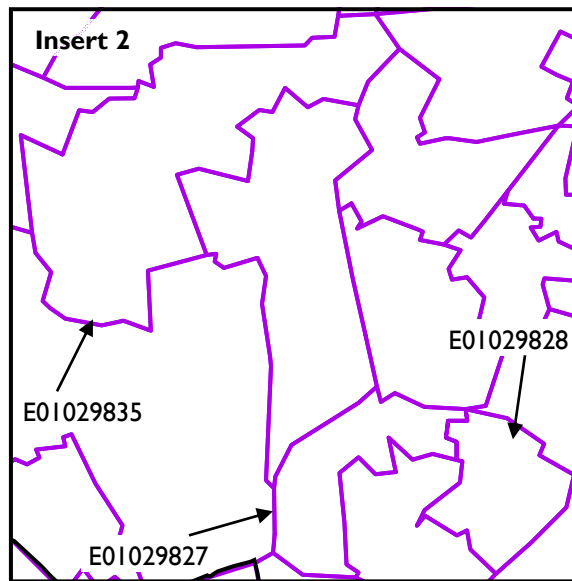
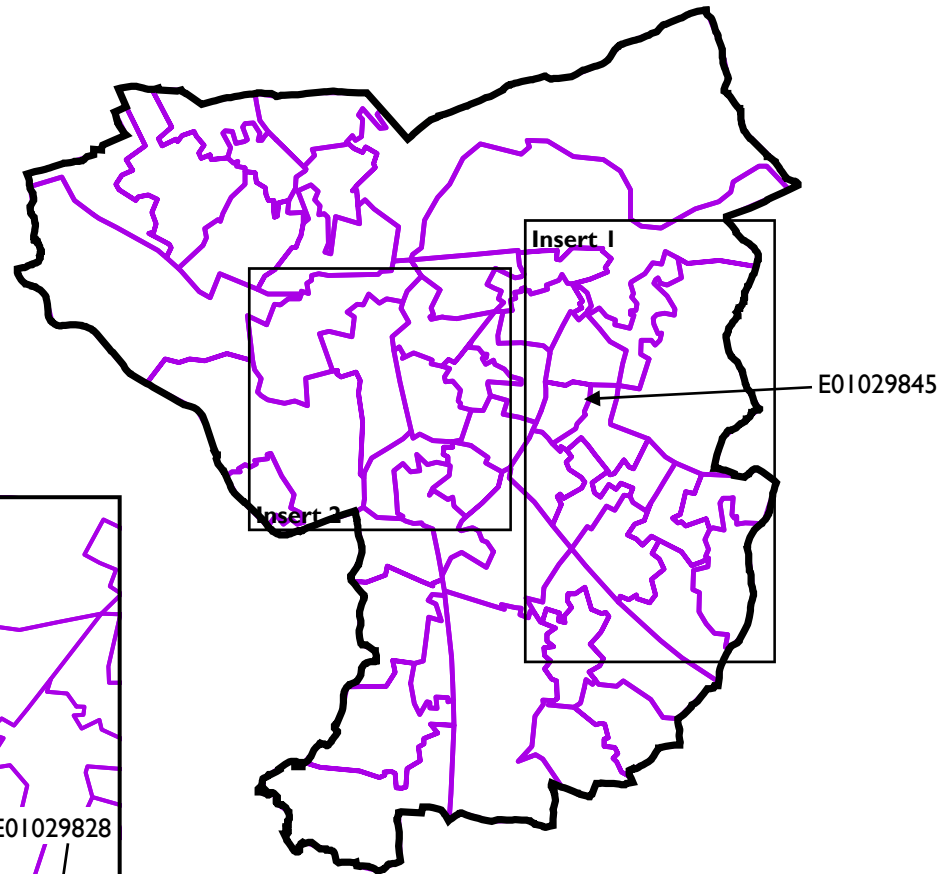
	County 2007 (%)	District 2007 (%)	2005		2006		2007		CLP - County 2007	CLP - District 2007	Trend 2005-07
			Number	%	Number	%	Number	%			
<b>Free School Meal Eligibility</b>											
Reception to Year 2	11.1%	14.3%	91	12.6%	89	12.5%	96	13.7%	2.6%	-0.6%	
Year 3 to Year 6	11.0%	13.8%	109	12.5%	118	12.9%	112	12.4%	1.4%	-1.4%	
Year 7 to Year 11	8.7%	11.2%	119	10.3%	128	11.2%	123	11.0%	2.3%	-0.2%	
Year 12 to Year 13	3.0%	1.7%	4	3.3%	4	3.1%	2	1.8%	-1.3%	0.1%	Decline
<b>Special Educational Needs - Statemented</b>											
Reception to Year 2	1.4%	1.4%	14	1.9%	7	1.0%	8	1.1%	-0.3%	-0.2%	Decline
Year 3 to Year 6	2.7%	3.3%	36	4.1%	34	3.7%	28	3.1%	0.4%	-0.2%	Decline
Year 7 to Year 11	4.5%	7.1%	91	7.9%	87	7.6%	84	7.5%	3.0%	0.4%	Decline
Year 12 to Year 13	4.0%	5.5%	4	3.3%	8	6.2%	8	7.0%	3.0%	1.5%	Increase
<b>Special Educational Needs - School Action Plus</b>											
Reception to Year 2	3.3%	4.8%	19	2.6%	31	4.3%	25	3.6%	0.3%	-1.2%	
Year 3 to Year 6	5.1%	5.4%	42	4.8%	48	5.3%	51	5.6%	0.5%	0.2%	Increase
Year 7 to Year 11	3.9%	4.9%	55	4.8%	65	5.7%	62	5.5%	1.6%	0.6%	
Year 12 to Year 13	0.6%	1.4%	1	0.8%	4	3.1%	2	1.8%	1.2%	0.4%	
<b>Special Educational Needs - School Action</b>											
Reception to Year 2	7.2%	7.8%	40	5.6%	53	7.4%	56	8.0%	0.8%	0.2%	Increase
Year 3 to Year 6	10.7%	12.6%	89	10.2%	101	11.1%	82	9.1%	-1.6%	-3.5%	
Year 7 to Year 11	8.8%	12.4%	170	14.7%	162	14.2%	143	12.8%	4.0%	0.4%	Decline
Year 12 to Year 13	1.7%	2.0%	6	4.9%	4	3.1%	1	0.9%	-0.8%	-1.1%	Decline

The key has been designed to try and help indicate areas of difference. In this section it has been agreed that a minus figure actually represents a reduction in need. The colour coding has been set at +/-5% for Free School Meals or Special Educational Need. Therefore if the Free School Meals is 5% below county it will be coloured green and if it is 5% above county it would be coloured red.

**Key**  
 FSM 5% less than  
 FSM 5% greater than



**Lower Super Output Areas (LSOA) boundary in Tamworth Borough  
(Selected key LSOAs for deprivation labelled)**



Lower Super Output Areas (LSOAs) are identified by a nine-digit code.

This product includes mapping data licensed from Ordnance Survey with the permission of the Controller of Her Majesty's Stationary Office © Crown Copyright and/or database right 2008. All rights reserved. Licence Number 100019422.

Produced by the Research Unit, Development Services Directorate, Staffordshire County Council, 2008.

# The Staffordshire IMD 2007 Summary Card:

## Tamworth

This card presents a summary of information from the 2007 update of the national Indices of Deprivation (IMD 2007). It is an attempt to summarise, on one piece of paper, information on deprivation in the area covered by Tamworth Borough. The key information covered here includes the overall multiple measure of deprivation, seven different domains (types) of deprivation and two indices focusing respectively on income deprivation affecting children and older people. Ten pieces of data for each of the fifty Lower Super Output Areas in Tamworth Borough. Five hundred bits of information on one piece of paper.

By its very nature this document presents an overview of all deprivation in Tamworth in 2007. Further detail on deprivation in Tamworth Borough can be found in the complementary, more detailed district reports available from the Staffordshire Observatory website. Also available are the equivalent documents for the other seven districts in Staffordshire and a County document. For further details go to: <http://www.staffordshirepartnership.org.uk/observatory/> or contact Rosanne Cororan on 01785 276538 or email [Rosanne.cororan@staffordshire.gov.uk](mailto:Rosanne.cororan@staffordshire.gov.uk).

### Background to the IMD 2007

- X The English Indices of Deprivation 2007 (ID 2007) are the Government's official measure of multiple deprivation at small area level. The 2007 Indices update information provided in the IMD 2004.
- X The IMD 2007 provides a relative ranking of areas across England according to their level of deprivation.
- X The Index of Multiple Deprivation 2007 (IMD 2007) is based on the small area geography known as Lower Super Output Areas (LSOAs). LSOAs have between 1000 and 3000 people living in them with an average population of 1500 people. In most cases, these are smaller than wards, thus allowing the identification of small pockets of deprivation.
- X The IMD brings together 37 different indicators which cover specific aspects or dimensions of deprivation: Income, Employment, Health and Disability, Education, Skills and Training, Barriers to Housing and Services, Living Environment and Crime. These are weighted and combined to create the overall IMD 2007.
- X The majority of the data underpinning the IMD 2007 represents 2005 although some data covers a number of years, for example an average of 2003-2005.

This is taken from the Guidance for Using the English Indices of Deprivation 2007 produced by Communities and Local Government:  
<http://www.communities.gov.uk/documents/communities/doc/615986>



