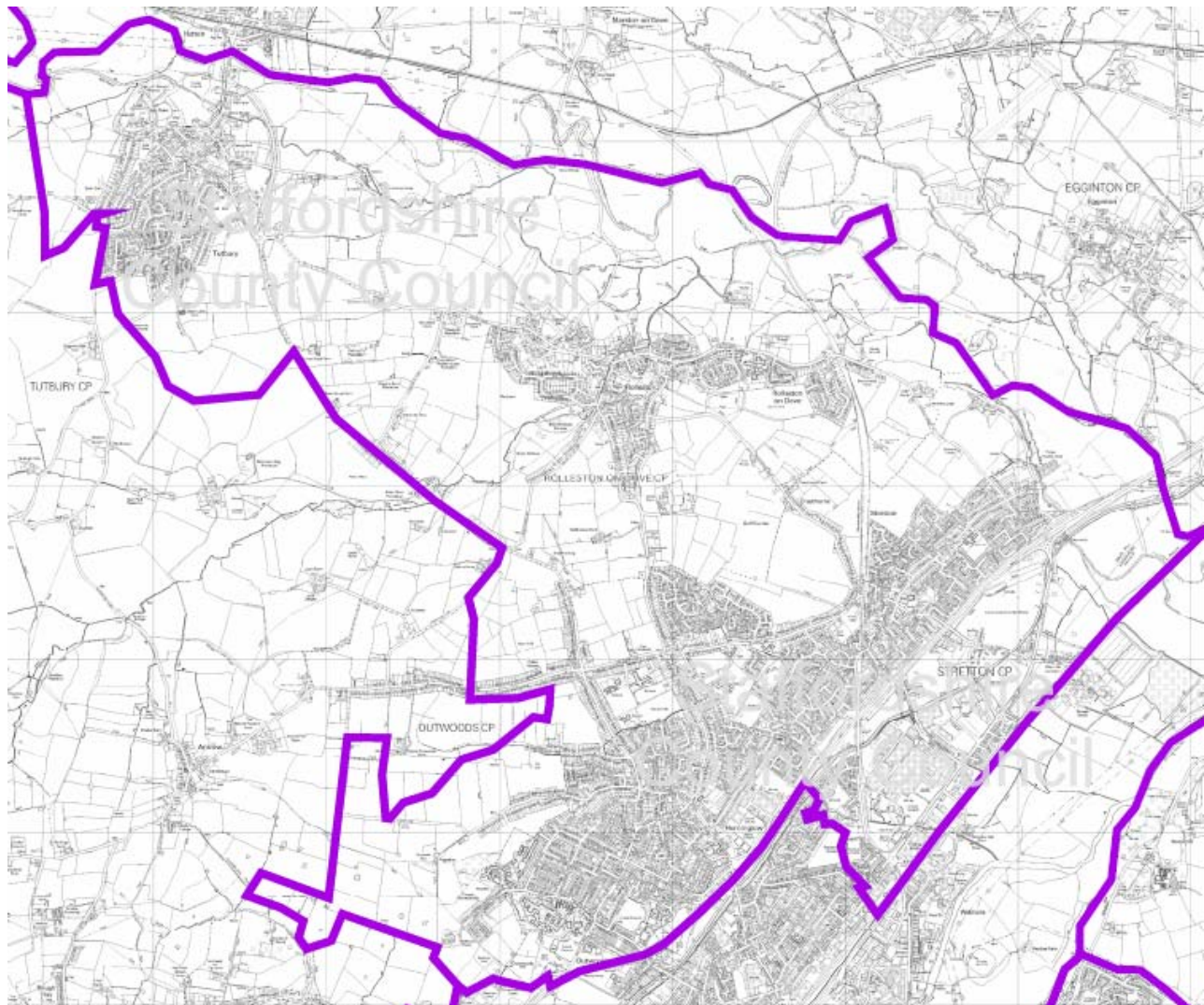


Community and Learning Partnerships

Data Profile
East Staffordshire ES1



This map is reproduced from Ordnance Survey Material with the permission of Ordnance Survey on behalf of the controller of Her Majesty's Stationery Office (C) Crown Copyright. Unauthorised reproduction infringes Crown Copyright and may lead to prosecution or civil proceedings. Staffordshire County Council 100019422. 2005 Produced by the Educational Research Analysis Unit, Children and Life long Learning Directorate, Staffordshire County Council, 2005.

Produced by Educational Research & Analysis
School Improvement Division
Staffordshire County Council

Staffordshire
County Council

2001 Census - Social Profile de ferrers High CLP

Population	Count	Percent	Index
Resident Population	23950		
Males	11537	48.2%	99
Females	12413	51.8%	101
People living in Households	23820	99.5%	101
People Living in Communal Establishment	131	0.5%	30

Age Profile	Count	Percent	Index
0-4	1351	5.6%	95
5-14	3301	13.8%	107
15	301	1.3%	99
16-19	1042	4.4%	89
20-29	2248	9.4%	74
30-44	5582	23.3%	103
45-59	4723	19.7%	104
60-74	3623	15.1%	114
75-84	1352	5.6%	101
85+	423	1.8%	91

Households	Count	Percent	Index
Total Household Spaces	10404		
Occupied Household Spaces	10043	96.5%	100
Vacant Household Spaces	329	3.2%	99
Second Residences	32	0.3%	48
Average household size	2.37		101
All Single Person Households	2680	26.7%	89
All lone pensioner households	1475	14.7%	95
All pensioner households	2550	25.4%	107
Single Parent Households with dependent children	536	5.3%	83
Single Parent Households with non-dependent children	230	2.3%	75
All households with dependent children	3069	30.6%	104
Households with no employed adult and dependent children	322	3.2%	66
All households with 1 or more persons with Limiting Long-term Illness	3162	31.5%	94

Health and Caring	Count	Percent	Index
People not in good health	1866	7.8%	86
People with a Limiting Long-term Illness	3984	16.6%	93
People of working age with Limiting Long-term Illness	1695	7.1%	87
People who provide unpaid care	2485	10.4%	105
People who provide more than 50 hours of unpaid care	488	2.0%	100

Amenity	Count	Percent	Index
Overcrowded households	358	3.6%	50
No central heating	1195	11.9%	140
No WC and bath/shower	42	0.4%	86

Ethnic Group	Count	Percent	Index
White	23187	96.8%	106
Mixed	158	0.7%	50
Indian	140	0.6%	28
Pakistani	243	1.0%	71
Bagladeshi	10	0.0%	7
Other Asian	12	0.1%	10
Black	110	0.5%	20
Chinese	51	0.2%	47
Other Ethnic Groups	38	0.2%	36

Religion	Count	Percent	Index
Christian	19279	80.5%	112
Buddhist	30	0.1%	44
Hindu	89	0.4%	33
Jewish	3	0.0%	2
Muslim	269	1.1%	36
Sikh	43	0.2%	27
Other Religion	27	0.1%	39
No Religion	2615	10.9%	75
Religion not Stated	1587	6.6%	86

Dwelling Type	Count	Percent	Index
Detached	3498	33.7%	144
Semi-detached	3916	37.7%	115
Terraced	2122	20.4%	76
Purpose built flat	603	5.8%	40
Flat in converted / shared house	136	1.3%	28
Flat in commercial building	73	0.7%	59
Caravan/Mobile home/Temporary	44	0.4%	97

Tenure	Count	Percent	Index
Owner Occupied	8028	79.9%	117
Shared Ownership	40	0.4%	61
Local Authority rented	753	7.5%	57
Housing Association / Registered Social Landlord	496	4.9%	82
Privately rented	442	4.4%	50
Other rented	286	2.8%	89

Car Ownership	Count	Percent	Index
Households with no car	2128	21.2%	79
Households with 1 car	4613	45.9%	105
Households with 2 cars	2777	27.7%	117
Households with 3 or more cars	526	5.2%	89
Total number of cars in the area	11869		
Average no of cars per household	1.18		107

As a result of rounding some figures may not always equal the total for this area.

Census output is Crown Copyright and is reproduced with the permission of the Controller of HMSO and the Queen's Printer for Scotland

Source: 2001 Census Key Statistics

An Index has been created to compare the above area with England. The scores for England always equals 100, therefore a score of less than 100 indicates fewer people or households in that category for the area compared with England. A score over 100 indicates more people or households in that category for the area compared with England.

Produced by Research Unit, Development Services Department, Staffordshire County Council

Further details available by telephoning 01785 277359 or email mark.sproston@staffordshire.gov.uk

2001 Census - Economic Profile de Ferrers High CLP

Population ¹	Count	Percent	Index
All people aged 16-74	17218		
All males aged 16-74	8397	48.8%	99
All females aged 16-74	8822	51.2%	101
All people in employment	11359	66.0%	104
All males in employment	6092	72.5%	104
All females in employment	5265	59.7%	105

Economic Activity ¹	Count	Percent	Index
All people economically active	11822	68.7%	103
All people economically inactive	5396	31.3%	95

All People Economically Active

Employees - Full-time	7400	62.6%	103
Employees - Part-time	2468	20.9%	118
Self Employed	1132	9.6%	77
Unemployed	440	3.7%	74
Full-time Student	382	3.2%	84

All People Economically Inactive

Retired	2839	52.6%	129
Full-time student	459	8.5%	60
Looking after family or home	1008	18.7%	95
Permanently sick or disabled	715	13.3%	83
Other	375	6.9%	74

Industry of Employment ²

Industry of Employment ²	Count	Percent	Index
Agriculture, Hunting, Forestry and Fishing	123	1.1%	73
Mining and Quarrying	20	0.2%	71
Manufacturing	2688	23.7%	160
Electricity, gas and water supply	98	0.9%	121
Construction	779	6.9%	102
Wholesale and Retail trade	1875	16.5%	98
Hotels and Catering	534	4.7%	99
Transport, storage and communication	639	5.6%	79
Financial, Real Estate and Business Activity	1403	12.4%	69
Public Administration and Defence	388	3.4%	60
Education	820	7.2%	93
Health and Social Work	1533	13.5%	126
Other	459	4.0%	78

Qualifications ¹

Qualifications ¹	Count	Percent	Index
No Qualifications	5149	29.9%	104
Level 1 Qualifications	3115	18.1%	109
Level 2 Qualifications	3462	20.1%	104
Level 3 Qualifications	1078	6.3%	75
Level 4 or 5 Qualifications	2879	16.7%	84
Other Qualification / Level Unknown	1535	8.9%	129

Unemployed ¹

Unemployed ¹	Count	Percent	Index
All unemployed	440		
Aged 16-24	106	24.1%	94
Aged 50+	115	26.1%	140
Long-term Unemployed	135	30.7%	101

Occupation Groups ²	Count	Percent	Index
Managers and Senior Officials	1654	14.6%	95
Professional	1094	9.6%	86
Assoc Professional and technical	1381	12.2%	88
Administrative and Secretarial	1421	12.5%	93
Skilled Trade	1413	12.4%	108
Personal Services	757	6.7%	97
Sales and Customer Service	789	6.9%	91
Process, plant and machine operatives	1310	11.5%	137
Elementary occupations	1537	13.5%	115

Socio-Economic Class ¹

Socio-Economic Class ¹	Count	Percent	Index
Large Employers and Higher Managerial	655	3.8%	109
Higher Professional	710	4.1%	81
Lower Managerial and Professional	3041	17.7%	94
Intermediate	1582	9.2%	97
Small Employers and own account workers	1019	5.9%	85
Lower Supervisory and Technical	1496	8.7%	122
Semi-routine	2405	14.0%	120
Routine	1828	10.6%	118
Never worked	263	1.5%	56
Long-term unemployed	132	0.8%	76
Full-time Student	813	4.7%	67
Not Classified	3272	19.0%	108

Hours Worked (Week) ²

Hours Worked (Week) ²	Count	Percent	Index
Males part-time < 15 hours	165	2.7%	78
Males part-time 16-30 hours	269	4.4%	72
Males full-time 31-48 hours	4035	66.2%	100
Males full-time > 49 hours	1623	26.6%	110
Females part-time < 15 hours	872	16.6%	118
Females part-time 16-30 hours	1703	32.3%	114
Females full-time 31-48 hours	2393	45.5%	90
Females full-time >49 hours	297	5.6%	82

Travel to Work ²

Travel to Work ²	Count	Percent	Index
Work mainly from home	858	7.6%	82
Train, Light Rail, Tram, Metro, Underground	88	0.8%	10
Bus	495	4.4%	58
Motorcycle	148	1.3%	117
Car (as driver or passenger)	8088	71.2%	117
Taxi	59	0.5%	100
Bicycle	527	4.6%	164
Walk	1066	9.4%	94
Other	35	0.3%	66

Note: 1 = People aged 16-74
2 = People Aged 16-74 in employment

As a result of rounding some figures may not always equal the total for this area.

Census output is Crown Copyright and is reproduced with the permission of the Controller of HMSO and the Queen's Printer for Scotland

Source: 2001 Census Key Statistics

An Index has been created to compare the above area with England. The scores for England always equals 100, therefore a score of less than 100 indicates fewer people in that category for the area compared with England. A score over 100 indicates more people in that category for the area compared with England.

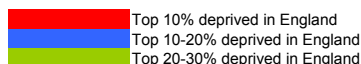
Produced by Research Unit, Development Services Department, Staffordshire County Council

Further details available by telephoning 01785 277359 or email mark.sproston@staffordshire.gov.uk

Indices of Multiple Deprivation 2007

Understanding this information

The colour shading highlights where the LSOA is in the top 10%, 20% or 30% most deprived areas in England for that measure of Deprivation.



The LSOAs are ranked here according to their overall multiple deprivation score: most deprived to least deprived. The national ranking (out of 32,482) is shown in the top table, where 1=most deprived and 32,482=least deprived. The bottom table replicates the information but putting the ranking into a percentage, so that it can be seen where the LSOA falls within the whole country. The deprivation domain titles have been abbreviated.

Ward Name	LOWERSOA	IMD	Income	Employment	Health	Education	Housing	Crime	Living Environment
Horninglow	E01029437	4693	4018	4354	4095	4184	14795	5874	11895
Horninglow	E01029436	6411	7166	6542	6062	9801	7263	8725	3553
Horninglow	E01029434	11465	11795	15322	13346	8422	28729	14005	1746
Tutbury and Outwoods	E01029464	14355	12880	15052	14003	9403	24213	17585	9100
Eton Park	E01029428	18304	19316	25699	15625	14561	11870	20519	6544
Stretton	E01029456	19086	19221	21494	17283	16174	10034	22144	12153
Horninglow	E01029438	24171	22292	23108	20387	14815	27091	22445	19170
Stretton	E01029458	24407	23607	21133	19015	21197	18199	28244	17536
Stretton	E01029455	25197	30364	30984	25598	17302	3534	26326	22836
Horninglow	E01029435	25668	25467	25121	21367	20541	16968	25700	16052
Rolleston on Dove	E01029444	25677	21381	21000	22090	24717	24775	27826	17494
Stretton	E01029457	25952	25299	30373	22644	20956	11352	21593	18115
Tutbury and Outwoods	E01029465	26895	26478	24267	22073	23104	27686	22140	14461
Tutbury and Outwoods	E01029466	28866	30122	27630	24785	24630	15404	23644	21883
Rolleston on Dove	E01029443	30458	31653	26374	27333	29869	17544	27020	22388
Stretton	E01029454	31131	32261	29015	28060	29273	12773	30112	28739

Ward Name	LOWERSOA	IMD	Income	Employment	Health	Education	Housing	Crime	Living Environment
Horninglow	E01029437	14.4%	12.4%	13.4%	12.6%	12.9%	45.5%	18.1%	36.6%
Horninglow	E01029436	19.7%	22.1%	20.1%	18.7%	30.2%	22.4%	26.9%	10.9%
Horninglow	E01029434	35.3%	36.3%	47.2%	41.1%	25.9%	88.4%	43.1%	5.4%
Tutbury and Outwoods	E01029464	44.2%	39.7%	46.3%	43.1%	28.9%	74.5%	54.1%	28.0%
Eton Park	E01029428	56.4%	59.5%	79.1%	48.1%	44.8%	36.5%	63.2%	20.1%
Stretton	E01029456	58.8%	59.2%	66.2%	53.2%	49.8%	30.9%	68.2%	37.4%
Horninglow	E01029438	74.4%	68.6%	71.1%	62.8%	45.6%	83.4%	69.1%	59.0%
Stretton	E01029458	75.1%	72.7%	65.1%	58.5%	65.3%	56.0%	87.0%	54.0%
Stretton	E01029455	77.6%	93.5%	95.4%	78.8%	53.3%	10.9%	81.0%	70.3%
Horninglow	E01029435	79.0%	78.4%	77.3%	65.8%	63.2%	52.2%	79.1%	49.4%
Rolleston on Dove	E01029444	79.0%	65.8%	64.7%	68.0%	76.1%	76.3%	85.7%	53.9%
Stretton	E01029457	79.9%	77.9%	93.5%	69.7%	64.5%	34.9%	66.5%	55.8%
Tutbury and Outwoods	E01029465	82.8%	81.5%	74.7%	68.0%	71.1%	85.2%	68.2%	44.5%
Tutbury and Outwoods	E01029466	88.9%	92.7%	85.1%	76.3%	75.8%	47.4%	72.8%	67.4%
Rolleston on Dove	E01029443	93.8%	97.4%	81.2%	84.1%	92.0%	54.0%	83.2%	68.9%
Stretton	E01029454	95.8%	99.3%	89.3%	86.4%	90.1%	39.3%	92.7%	88.5%

Background to the Indices of Multiple Deprivation 2007

The English Indices of Deprivation 2007 (ID 2007) are the Government's official measure of multiple deprivation at small area level. The 2007 Indices update information provided in the IMD 2004.

The IMD 2007 provides a relative ranking of areas across England according to their level of deprivation.

The Index of Multiple Deprivation 2007 (IMD 2007) is based on the small area geography known as Lower Super Output Areas (LSOAs). LSOAs have between 1000 and 3000 people living in them with an average population of 1500 people. In most cases, these are smaller than wards, thus allowing the identification of small pockets of deprivation.

The IMD brings together 37 different indicators which cover specific aspects or dimensions of deprivation: Income, Employment, Health and Disability, Education, Skills and Training, Barriers to Housing and Services, Living Environment and Crime. These are weighted and combined to create the overall IMD 2007.

The majority of the data underpinning the IMD 2007 represents 2005 although some data covers a number of years, for example an average of 2003-2005.

This is taken from the Guidance for Using the English Indices of Deprivation 2007 produced by Communities and Local Government:
<http://www.communities.gov.uk/documents/communities/doc/615986>

Foundation Stage Profile Attainment

The Foundation Stage Profile allocates a point score for each child in 13 areas of learning. The results below indicate the number and percentage of children who have achieved a score of 6 or above. This threshold has been chosen as it is the expected level of attainment as stipulated by the Department for Children, Schools and Families.

	National	County	District	2005		2006		2007		CLP - National	CLP - County	CLP - District	Trend 2005-07
	2007 (%)	2007 (%)		Number	%	Number	%	Number	%	2007	2007	2007	
Personal, social and emotional development													
Dispositions and attitudes	87.0%	90.9%	87.6%	294	94.2%	289	87.6%	290	89.5%	2.5%	-1.4%	1.9%	
Social development	80.0%	86.4%	82.1%	258	82.7%	265	80.3%	274	84.6%	4.6%	-1.8%	2.5%	
Emotional development	76.0%	84.4%	82.1%	235	75.3%	268	81.2%	279	86.1%	10.1%	1.7%	4.0%	Increase
Communication, language and literacy													
Language for communication and thinking	78.0%	85.0%	79.3%	237	76.0%	250	75.8%	257	79.3%	1.3%	-5.7%	0.0%	
Linking sounds and letters	65.0%	72.0%	67.0%	174	55.8%	190	57.6%	200	61.7%	-3.3%	-10.3%	-5.3%	Increase
Reading	69.0%	78.6%	74.3%	235	75.3%	213	64.5%	230	71.0%	2.0%	-7.6%	-3.3%	
Writing	58.0%	70.1%	65.4%	166	53.2%	179	54.2%	189	58.3%	0.3%	-11.8%	-7.1%	Increase
Mathematical development													
Calculating	87.0%	90.7%	89.7%	286	91.7%	298	90.3%	304	93.8%	6.8%	3.1%	4.1%	
Numbers as labels and for counting	70.0%	78.6%	72.6%	227	72.8%	232	70.3%	246	75.9%	5.9%	-2.7%	3.3%	
Shapes, space and measures	80.0%	88.4%	83.8%	286	91.7%	284	86.1%	280	86.4%	6.4%	-2.0%	2.6%	
Knowledge and understanding of the world	77.0%	85.8%	81.9%	286	91.7%	254	77.0%	287	88.6%	11.6%	2.8%	6.7%	
Physical development	88.0%	92.1%	89.8%	300	96.2%	293	88.8%	305	94.1%	6.1%	2.0%	4.3%	
Creative development	78.0%	84.7%	80.3%	280	89.7%	258	78.2%	272	84.0%	6.0%	-0.7%	3.7%	
78 points and 6 or above in PSE and CLL Scales	45.0%	57.5%	51.8%	126	40.4%	136	41.2%	142	43.8%	-1.2%	-13.7%	-8.0%	Increase

Key Stage One to Four Attainment

The National Curriculum for Key Stage One through to Key Stage Four runs through Year 1 to Year 11. The expected level of attainment for Key Stage One is Level 2B or above, Key Stage Two is Level 4 or above, Key Stage 3 is Level 5 or above and at Key Stage 4 the new level of expected attainment is 5+ A*-C including GCSE English and Mathematics. The results below indicate the number and percentage of children who have achieved these thresholds. These thresholds have been chosen as it is the expected level of attainment as stipulated by the Department for Children, Schools and Families.

	National	County	District	2005		2006		2007		CLP - National	CLP - County	CLP - District	Trend 2005-07
	2007 (%)	2007 (%)		Number	%	Number	%	Number	%	2007	2007	2007	
KS1 Reading Level 2B+	71.0%	76.2%	75.4%	270	79.4%	241	76.5%	245	79.5%	8.5%	3.3%	4.1%	
KS1 Writing Level 2B+	59.0%	65.2%	65.1%	247	72.6%	203	64.4%	211	68.5%	9.5%	3.3%	3.4%	
KS1 Mathematics Level 2B+	74.0%	78.1%	78.5%	286	84.1%	242	76.8%	259	84.1%	10.1%	6.0%	5.6%	
KS2 English Level 4+	80.0%	81.0%	79.9%	202	72.9%	213	85.2%	214	85.6%	5.6%	4.6%	5.7%	Increase
KS2 Mathematics Level 4+	77.0%	78.0%	76.1%	201	72.6%	201	80.4%	202	80.8%	3.8%	2.8%	4.7%	Increase
KS2 Science Level 4+	88.0%	90.0%	89.2%	231	83.4%	229	91.6%	235	94.0%	6.0%	4.0%	4.8%	Increase
KS3 English Level 5+	74.0%	77.0%	76.4%	231	65.1%	294	78.0%	273	76.7%	2.7%	-0.3%	0.3%	
KS3 Mathematics Level 5+	76.0%	78.0%	76.2%	276	77.7%	306	81.4%	260	73.0%	-3.0%	-5.0%	-3.2%	
KS3 Science Level 5+	73.0%	75.0%	73.1%	235	66.0%	280	73.9%	247	69.4%	-3.6%	-5.6%	-3.7%	
KS4 5 or more A*-C Grade	62.0%	60.0%	62.7%	193	61.1%	230	65.2%	224	65.9%	3.9%	5.9%	3.2%	Increase
KS4 5 or more A*-C Grade including English & Maths	46.8%	45.8%	49.3%	127	40.2%	159	45.0%	160	47.1%	0.3%	1.3%	-2.2%	Increase
KS4 5 or more A*-G Grade	91.7%	93.2%	92.2%	290	91.8%	323	91.5%	209	61.5%	-30.2%	-31.7%	-30.7%	Decline
KS4 2 or more A*-C Grade in Science	50.3%	49.7%	49.8%	156	49.4%	202	57.2%	159	46.8%	-3.5%	-2.9%	-3.0%	

Source: Educational Research Analysis.

Free School Meals and Special Educational Needs

	County 2007 (%)	District 2007 (%)	2005		2006		2007		CLP - County 2007	CLP - District 2007	Trend 2005-07
			Number	%	Number	%	Number	%			
Free School Meal Eligibility											
Reception to Year 2	11.1%	11.9%	115	12.0%	100	10.5%	107	11.0%	-0.1%	-0.9%	
Year 3 to Year 6	11.0%	11.2%	166	12.3%	146	10.9%	141	10.8%	-0.2%	-0.5%	Decline
Year 7 to Year 11	8.7%	9.9%	161	9.0%	155	8.5%	161	9.1%	0.4%	-0.8%	
Year 12 to Year 13	3.0%	5.4%	16	6.3%	8	3.3%	11	4.1%	1.1%	-1.3%	
Special Educational Needs - Statemented											
Reception to Year 2	1.4%	1.0%	15	1.6%	10	1.1%	6	0.6%	-0.8%	-0.4%	Decline
Year 3 to Year 6	2.7%	2.6%	49	3.6%	45	3.3%	37	2.8%	0.1%	0.2%	Decline
Year 7 to Year 11	4.5%	4.5%	92	5.2%	88	4.8%	74	4.2%	-0.3%	-0.3%	Decline
Year 12 to Year 13	4.0%	5.2%	8	3.2%	6	2.5%	14	5.2%	1.2%	0.1%	
Special Educational Needs - School Action Plus											
Reception to Year 2	3.3%	3.6%	17	1.8%	23	2.4%	28	2.9%	-0.4%	-0.7%	Increase
Year 3 to Year 6	5.1%	5.3%	53	3.9%	66	4.9%	65	5.0%	-0.2%	-0.3%	Increase
Year 7 to Year 11	3.9%	2.9%	51	2.9%	67	3.7%	57	3.2%	-0.7%	0.4%	
Year 12 to Year 13	0.6%	0.5%	0	0.0%	1	0.4%	4	1.5%	0.9%	1.0%	Increase
Special Educational Needs - School Action											
Reception to Year 2	7.2%	8.0%	76	7.9%	67	7.0%	67	6.9%	-0.3%	-1.1%	Decline
Year 3 to Year 6	10.7%	12.5%	149	11.0%	173	12.9%	168	12.8%	2.2%	0.3%	
Year 7 to Year 11	8.8%	9.0%	108	6.1%	129	7.1%	128	7.3%	-1.5%	-1.8%	Increase
Year 12 to Year 13	1.7%	1.1%	1	0.4%	0	0.0%	1	0.4%	-1.3%	-0.7%	

The key has been designed to try and help indicate areas of difference. In this section it has been agreed that a minus figure actually represents a reduction in need. The colour coding has been set at +/-5% for Free School Meals or Special Educational Need. Therefore if the Free School Meals is 5% below county it will be coloured green and if it is 5% above county it would be coloured red.

Key
 FSM 5% less than
 FSM 5% greater than

