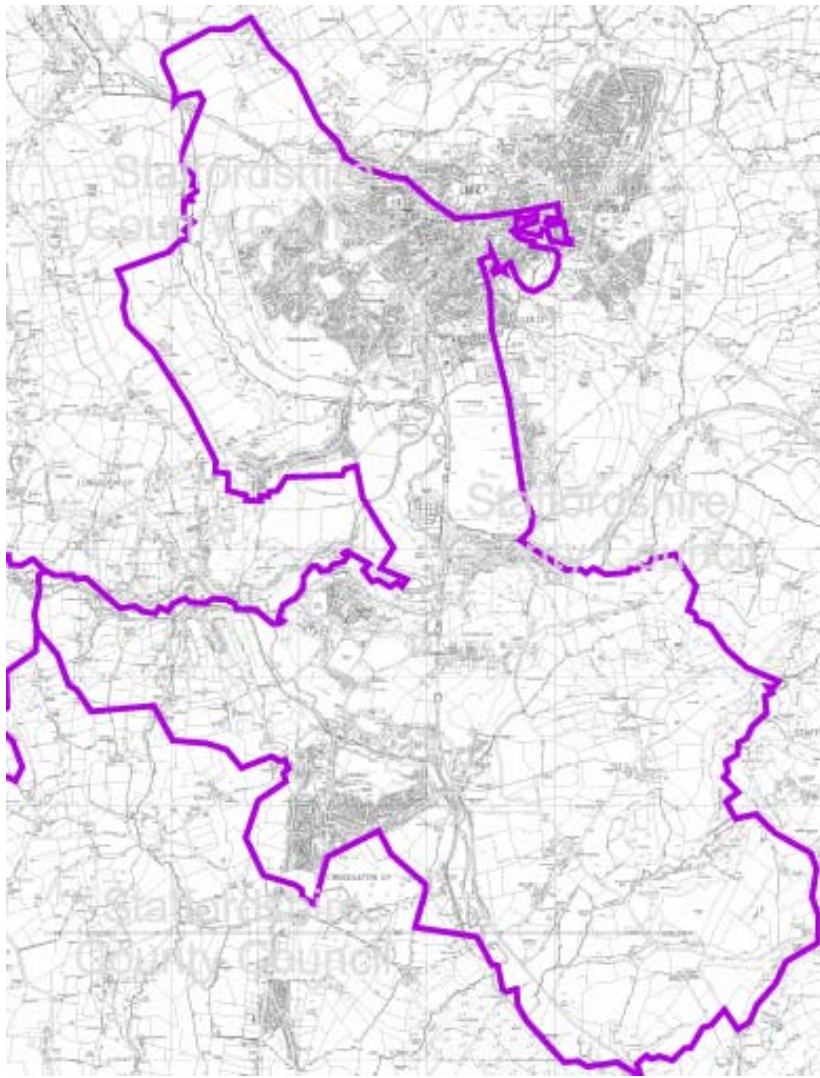


# Community and Learning Partnerships

Data Profile

Staffordshire Moorlands SM7



This map is reproduced from Ordnance Survey Material with the permission of Ordnance Survey on behalf of the controller of Her Majesty's Stationery Office (C) Crown Copyright. Unauthorised reproduction infringes Crown Copyright and may lead to prosecution or civil proceedings. Staffordshire County Council 100019422. 2005 Produced by the Educational Research Analysis Unit, Children and Life long Learning Directorate, Staffordshire County Council, 2005.

Produced by Educational Research & Analysis  
School Improvement Division  
Staffordshire County Council

# 2001 Census - Social Profile

## Westwood High CLP

Population	Count	Percent	Index
Resident Population	14556		
Males	7146	49.1%	101
Females	7410	50.9%	99
People living in Households	14341	98.5%	100
People Living in Communal Establishment	215	1.5%	81

Age Profile	Count	Percent	Index
0-4	824	5.7%	95
5-14	1673	11.5%	89
15	202	1.4%	109
16-19	653	4.5%	92
20-29	1684	11.6%	91
30-44	3239	22.3%	98
45-59	3064	21.0%	111
60-74	2014	13.8%	105
75-84	871	6.0%	107
85+	332	2.3%	117

Households	Count	Percent	Index
Total Household Spaces	6599		
Occupied Household Spaces	6284	95.2%	99
Vacant Household Spaces	309	4.7%	147
Second Residences	6	0.1%	14
Average household size	2.28		97
All Single Person Households	1928	30.7%	102
All lone pensioner households	953	15.2%	95
All pensioner households	1566	24.9%	105
Single Parent Households with dependent children	320	5.1%	79
Single Parent Households with non-dependent children	164	2.6%	86
All households with dependent children	1772	28.2%	96
Households with no employed adult and dependent children	173	2.8%	57
All households with 1 or more persons with Limiting Long-term Illness	2125	33.8%	101

Health and Caring	Count	Percent	Index
People not in good health	1337	9.2%	102
People with a Limiting Long-term Illness	2782	19.1%	107
People of working age with Limiting Long-term Illness	1266	8.7%	106
People who provide unpaid care	1632	11.2%	113
People who provide more than 50 hours of unpaid care	278	1.9%	94

Amenity	Count	Percent	Index
Overcrowded households	212	3.4%	47
No central heating	792	12.6%	148
No WC and bath/shower	10	0.2%	33

Ethnic Group	Count	Percent	Index
White	14376	98.8%	109
Mixed	87	0.6%	46
Indian	21	0.1%	7
Pakistani	17	0.1%	8
Bagladeshi	0	0.0%	0
Other Asian	23	0.2%	33
Black	12	0.1%	4
Chinese	8	0.1%	12
Other Ethnic Groups	20	0.1%	31

Religion	Count	Percent	Index
Christian	11667	80.2%	112
Buddhist	15	0.1%	36
Hindu	3	0.0%	2
Jewish	0	0.0%	0
Muslim	28	0.2%	6
Sikh	16	0.1%	17
Other Religion	27	0.2%	63
No Religion	1755	12.1%	83
Religion not Stated	1036	7.1%	93

Dwelling Type	Count	Percent	Index
Detached	1617	24.5%	105
Semi-detached	2090	31.6%	96
Terraced	2336	35.3%	132
Purpose built flat	255	3.9%	27
Flat in converted / shared house	143	2.2%	46
Flat in commercial building	156	2.4%	198
Caravan/Mobile home/Temporary	12	0.2%	42

Tenure	Count	Percent	Index
Owner Occupied	5122	81.5%	120
Shared Ownership	32	0.5%	78
Local Authority rented	198	3.2%	24
Housing Association / Registered Social Landlord	306	4.9%	80
Privately rented	458	7.3%	83
Other rented	169	2.7%	84

Car Ownership	Count	Percent	Index
Households with no car	1396	22.2%	83
Households with 1 car	3018	48.0%	110
Households with 2 cars	1532	24.4%	103
Households with 3 or more cars	338	5.4%	91
Total number of cars in the area	7218		
Average no of cars per household	1.15		104

As a result of rounding some figures may not always equal the total for this area.

Census output is Crown Copyright and is reproduced with the permission of the Controller of HMSO and the Queen's Printer for Scotland

Source: 2001 Census Key Statistics

*An Index has been created to compare the above area with England. The scores for England always equals 100, therefore a score of less than 100 indicates fewer people or households in that category for the area compared with England. A score over 100 indicates more people or households in that category for the area compared with England.*

**Produced by Research Unit, Development Services Department, Staffordshire County Council**

Further details available by telephoning 01785 277359 or email mark.sproston@staffordshire.gov.uk

## 2001 Census - Economic Profile Westwood High CLP

Population <sup>1</sup>	Count	Percent	Index
All people aged 16-74	10654		
All males aged 16-74	5358	50.3%	102
All females aged 16-74	5296	49.7%	98
All people in employment	7091	66.6%	105
All males in employment	3874	72.3%	104
All females in employment	3218	60.8%	107

Economic Activity <sup>1</sup>	Count	Percent	Index
All people economically active	7403	69.5%	104
All people economically inactive	3251	30.5%	92

All People Economically Active	Count	Percent	Index
Employees - Full-time	4549	61.4%	101
Employees - Part-time	1407	19.0%	108
Self Employed	898	12.1%	98
Unemployed	278	3.8%	75
Full-time Student	271	3.7%	95

All People Economically Inactive	Count	Percent	Index
Retired	1591	48.9%	120
Full-time student	294	9.0%	64
Looking after family or home	508	15.6%	79
Permanently sick or disabled	619	19.0%	119
Other	239	7.4%	79

Industry of Employment <sup>2</sup>	Count	Percent	Index
Agriculture, Hunting, Forestry and Fishing	99	1.4%	95
Mining and Quarrying	26	0.4%	148
Manufacturing	1724	24.3%	164
Electricity, gas and water supply	60	0.8%	119
Construction	386	5.4%	81
Wholesale and Retail trade	1165	16.4%	97
Hotels and Catering	261	3.7%	78
Transport, storage and communication	312	4.4%	62
Financial, Real Estate and Business Activity	963	13.6%	75
Public Administration and Defence	290	4.1%	72
Education	533	7.5%	97
Health and Social Work	919	13.0%	121
Other	353	5.0%	96

Qualifications <sup>1</sup>	Count	Percent	Index
No Qualifications	3370	31.6%	110
Level 1 Qualifications	1907	17.9%	108
Level 2 Qualifications	2047	19.2%	99
Level 3 Qualifications	709	6.7%	80
Level 4 or 5 Qualifications	1821	17.1%	86
Other Qualification / Level Unknown	800	7.5%	108

Unemployed <sup>1</sup>	Count	Percent	Index
All unemployed	278		
Aged 16-24	69	24.8%	97
Aged 50+	47	16.9%	91
Long-term Unemployed	66	23.7%	78

Occupation Groups <sup>2</sup>	Count	Percent	Index
Managers and Senior Officials	945	13.3%	87
Professional	650	9.2%	82
Assoc Professional and technical	872	12.3%	89
Administrative and Secretarial	776	10.9%	82
Skilled Trade	995	14.0%	121
Personal Services	556	7.8%	114
Sales and Customer Service	490	6.9%	90
Process, plant and machine operatives	890	12.6%	149
Elementary occupations	920	13.0%	110

Socio-Economic Class <sup>1</sup>	Count	Percent	Index
Large Employers and Higher Managerial	344	3.2%	92
Higher Professional	336	3.2%	62
Lower Managerial and Professional	1914	18.0%	96
Intermediate	890	8.4%	88
Small Employers and own account workers	828	7.8%	111
Lower Supervisory and Technical	997	9.4%	132
Semi-routine	1371	12.9%	110
Routine	1298	12.2%	135
Never worked	137	1.3%	47
Long-term unemployed	66	0.6%	61
Full-time Student	554	5.2%	74
Not Classified	1919	18.0%	102

Hours Worked (Week) <sup>2</sup>	Count	Percent	Index
Males part-time < 15 hours	133	3.4%	99
Males part-time 16-30 hours	216	5.6%	90
Males full-time 31-48 hours	2643	68.2%	103
Males full-time > 49 hours	882	22.8%	94
Females part-time < 15 hours	475	14.8%	105
Females part-time 16-30 hours	971	30.2%	106
Females full-time 31-48 hours	1615	50.2%	99
Females full-time >49 hours	157	4.9%	71

Travel to Work <sup>2</sup>	Count	Percent	Index
Work mainly from home	573	8.1%	88
Train, Light Rail, Tram, Metro, Underground	14	0.2%	3
Bus	188	2.7%	35
Motorcycle	68	1.0%	86
Car (as driver or passenger)	4784	67.5%	111
Taxi	6	0.1%	16
Bicycle	143	2.0%	71
Walk	1285	18.1%	181
Other	31	0.4%	94

Note: 1 = People aged 16-74  
2 = People Aged 16-74 in employment

As a result of rounding some figures may not always equal the total for this area.

Census output is Crown Copyright and is reproduced with the permission of the Controller of HMSO and the Queen's Printer for Scotland

Source: 2001 Census Key Statistics

An Index has been created to compare the above area with England. The scores for England always equals 100, therefore a score of less than 100 indicates fewer people in that category for the area compared with England. A score over 100 indicates more people in that category for the area compared with England.

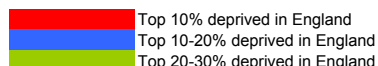
Produced by Research Unit, Development Services Department, Staffordshire County Council

Further details available by telephoning 01785 277359 or email mark.sproston@staffordshire.gov.uk

# Indices of Multiple Deprivation 2007

## Understanding this information

The colour shading highlights where the LSOA is in the top 10%, 20% or 30% most deprived areas in England for that measure of Deprivation.



The LSOAs are ranked here according to their overall multiple deprivation score: most deprived to least deprived. The national ranking (out of 32,482) is shown in the top table, where 1=most deprived and 32,482=least deprived. The bottom table replicates the information but putting the ranking into a percentage, so that it can be seen where the LSOA falls within the whole country. The deprivation domain titles have been abbreviated.

Ward Name	LOWERSOA	IONMD	Income	Employment	Health	Education	Housing	Crime	Living Environment
Leek South	E01029811	10042	8553	10790	8960	8711	28517	6745	10859
Leek East	E01029804	10235	15935	9326	8517	13702	30568	7456	1686
Leek South	E01029812	10721	14350	9761	6923	15275	30815	6780	4070
Leek West	E01029814	16967	19906	14827	13661	17061	29629	12555	7363
Cheddleton	E01029793	20413	21501	13440	16674	18565	18092	25085	22310
Leek South	E01029813	20781	20773	18426	19415	19374	8999	27594	18362
Cheddleton	E01029792	20913	23864	20243	20974	21452	4892	23985	17516
Leek West	E01029815	24628	26570	21234	20587	20328	20418	16086	20761
Leek West	E01029816	25403	28932	17953	16973	20022	17292	27986	31317

Ward Name	LOWERSOA	IONMD	Income	Employment	Health	Education	Housing	Crime	Living Environment
Leek South	E01029811	30.9%	26.3%	33.2%	27.6%	26.8%	87.8%	20.8%	33.4%
Leek East	E01029804	31.5%	49.1%	28.7%	26.2%	42.2%	94.1%	23.0%	5.2%
Leek South	E01029812	33.0%	44.2%	30.1%	21.3%	47.0%	94.9%	20.9%	12.5%
Leek West	E01029814	52.2%	61.3%	45.6%	42.1%	52.5%	91.2%	38.7%	22.7%
Cheddleton	E01029793	62.8%	66.2%	41.4%	51.3%	57.2%	55.7%	77.2%	68.7%
Leek South	E01029813	64.0%	64.0%	56.7%	59.8%	59.6%	27.7%	85.0%	56.5%
Cheddleton	E01029792	64.4%	73.5%	62.3%	64.6%	66.0%	15.1%	73.8%	53.9%
Leek West	E01029815	75.8%	81.8%	65.4%	63.4%	62.6%	62.9%	49.5%	63.9%
Leek West	E01029816	78.2%	89.1%	55.3%	52.3%	61.6%	53.2%	86.2%	96.4%

## Background to the Indices of Multiple Deprivation 2007

The English Indices of Deprivation 2007 (ID 2007) are the Government's official measure of multiple deprivation at small area level. The 2007 Indices update information provided in the IMD 2004.

The IMD 2007 provides a relative ranking of areas across England according to their level of deprivation.

The Index of Multiple Deprivation 2007 (IMD 2007) is based on the small area geography known as Lower Super Output Areas (LSOAs). LSOAs have between 1000 and 3000 people living in them with an average population of 1500 people. In most cases, these are smaller than wards, thus allowing the identification of small pockets of deprivation.

The IMD brings together 37 different indicators which cover specific aspects or dimensions of deprivation: Income, Employment, Health and Disability, Education, Skills and Training, Barriers to Housing and Services, Living Environment and Crime. These are weighted and combined to create the overall IMD 2007.

The majority of the data underpinning the IMD 2007 represents 2005 although some data covers a number of years, for example an average of 2003-2005.

This is taken from the Guidance for Using the English Indices of Deprivation 2007 produced by Communities and Local Government: <http://www.communities.gov.uk/documents/communities/doc615986>

## Foundation Stage Profile Attainment

The Foundation Stage Profile allocates a point score for each child in 13 areas of learning. The results below indicate the number and percentage of children who have achieved a score of 6 or above. This threshold has been chosen as it is the expected level of attainment as stipulated by the Department for Children, Schools and Families.

	National	County	District	2005		2006		2007		CLP - National	CLP - County	CLP - District	Trend 2005-07
	2007 (%)	2007 (%)		Number	%	Number	%	Number	%	2007	2007	2007	
Personal, social and emotional development													
Dispositions and attitudes	87.0%	90.9%	94.4%	156	95.7%	126	88.1%	166	94.9%	7.9%	4.0%	0.5%	
Social development	80.0%	86.4%	89.5%	146	89.6%	114	79.7%	152	86.9%	6.9%	0.5%	-2.6%	
Emotional development	76.0%	84.4%	88.8%	140	85.9%	112	78.3%	152	86.9%	10.9%	2.5%	-1.9%	
Communication, language and literacy													
Language for communication and thinking	78.0%	85.0%	89.9%	147	90.2%	116	81.1%	150	85.7%	7.7%	0.7%	-4.2%	
Linking sounds and letters	65.0%	72.0%	77.8%	115	70.6%	103	72.0%	130	74.3%	9.3%	2.3%	-3.5%	Increase
Reading	69.0%	78.6%	80.1%	147	90.2%	113	79.0%	138	78.9%	9.9%	0.3%	-1.2%	Decline
Writing	58.0%	70.1%	75.2%	119	73.0%	106	74.1%	126	72.0%	14.0%	1.9%	-3.2%	
Mathematical development													
Calculating	87.0%	90.7%	91.6%	152	93.3%	119	83.2%	160	91.4%	4.4%	0.7%	-0.2%	
Numbers as labels and for counting	70.0%	78.6%	80.3%	131	80.4%	104	72.7%	133	76.0%	6.0%	-2.6%	-4.3%	
Shapes, space and measures	80.0%	88.4%	90.7%	150	92.0%	130	90.9%	158	90.3%	10.3%	1.9%	-0.4%	Decline
Knowledge and understanding of the world	77.0%	85.8%	88.1%	153	93.9%	130	90.9%	157	89.7%	12.7%	3.9%	1.6%	Decline
Physical development	88.0%	92.1%	94.1%	152	93.3%	132	92.3%	164	93.7%	5.7%	1.6%	-0.4%	
Creative development	78.0%	84.7%	91.3%	153	93.9%	121	84.6%	160	91.4%	13.4%	6.7%	0.1%	
78 points and 6 or above in PSE and CLL Scales	45.0%	57.5%	63.7%	102	62.6%	86	60.1%	101	57.7%	12.7%	0.2%	-6.0%	Decline

## Key Stage One to Four Attainment

The National Curriculum for Key Stage One through to Key Stage Four runs through Year 1 to Year 11. The expected level of attainment for Key Stage One is Level 2B or above, Key Stage Two is Level 4 or above, Key Stage 3 is Level 5 or above and at Key Stage 4 the new level of expected attainment is 5+ A\*-C including GCSE English and Mathematics. The results below indicate the number and percentage of children who have achieved these thresholds. These thresholds have been chosen as it is the expected level of attainment as stipulated by the Department for Children, Schools and Families.

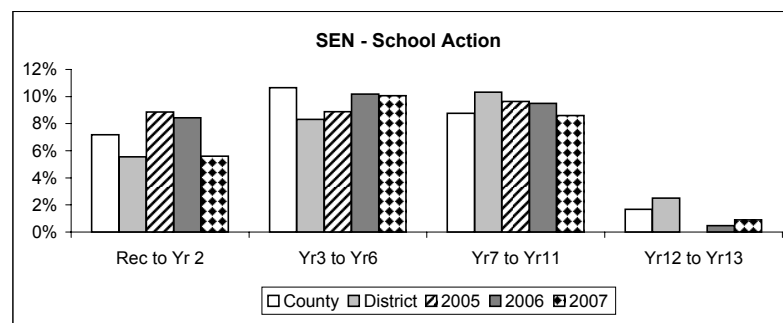
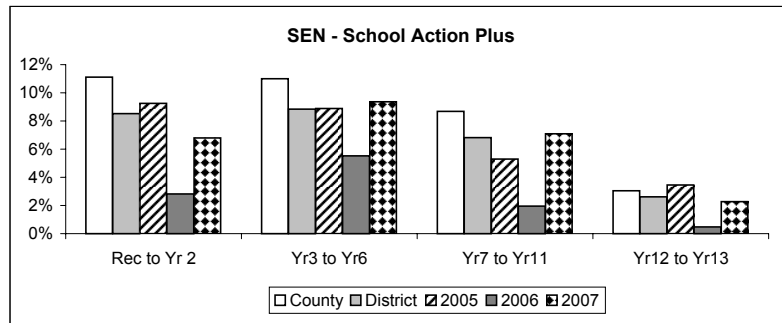
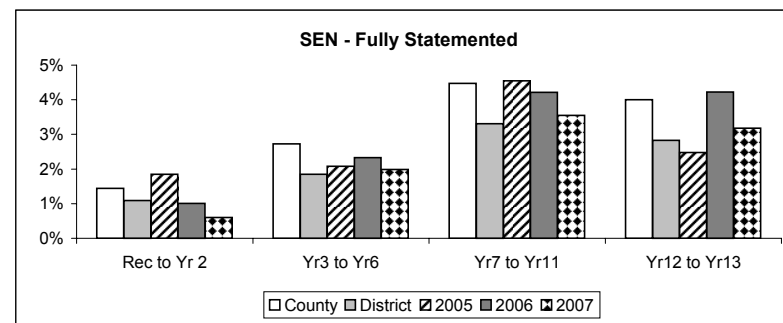
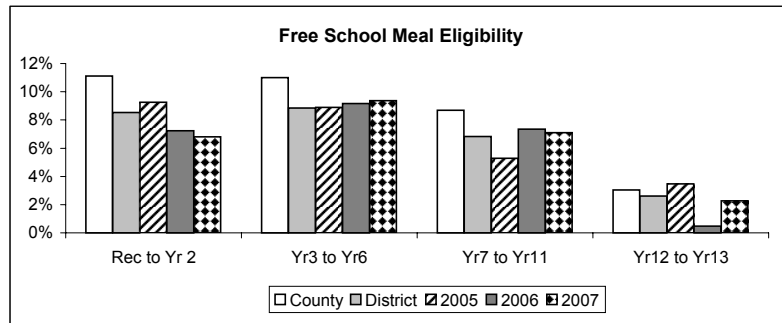
	National	County	District	2005		2006		2007		CLP - National	CLP - County	CLP - District	Trend 2005-07
	2007 (%)	2007 (%)		Number	%	Number	%	Number	%	2007	2007	2007	
KS1 Reading Level 2B+	71.0%	76.2%	75.8%	112	75.7%	128	71.5%	132	74.6%	3.6%	-1.6%	-1.2%	
KS1 Writing Level 2B+	59.0%	65.2%	66.8%	101	68.2%	121	67.6%	109	61.6%	2.6%	-3.6%	-5.2%	Decline
KS1 Mathematics Level 2B+	74.0%	78.1%	78.8%	117	79.1%	152	84.9%	143	80.8%	6.8%	2.7%	2.0%	
KS2 English Level 4+	80.0%	81.0%	80.8%	139	70.6%	148	79.6%	141	81.5%	1.5%	0.5%	0.7%	Increase
KS2 Mathematics Level 4+	77.0%	78.0%	76.1%	148	75.1%	139	74.7%	129	74.6%	-2.4%	-3.4%	-1.5%	Decline
KS2 Science Level 4+	88.0%	90.0%	87.2%	175	88.8%	163	87.6%	154	89.0%	1.0%	-1.0%	1.8%	
KS3 English Level 5+	74.0%	77.0%	80.1%	245	84.2%	160	86.5%	182	73.7%	-0.3%	-3.3%	-6.4%	
KS3 Mathematics Level 5+	76.0%	78.0%	83.4%	268	84.8%	179	87.7%	154	75.5%	-0.5%	-2.5%	-7.9%	
KS3 Science Level 5+	73.0%	75.0%	81.8%	197	84.5%	157	78.5%	169	75.4%	2.4%	0.4%	-6.4%	Decline
KS4 5 or more A*-C Grade	62.0%	60.0%	68.8%	124	64.6%	118	67.4%	114	67.5%	5.5%	7.5%	-1.3%	Increase
KS4 5 or more A*-C Grade including English & Maths	46.8%	45.8%	53.1%	91	47.4%	90	51.4%	91	53.8%	7.0%	8.0%	0.7%	Increase
KS4 5 or more A*-G Grade	91.7%	93.2%	94.5%	176	91.7%	167	95.4%	167	98.8%	7.1%	5.6%	4.3%	Increase
KS4 2 or more A*-C Grade in Science	50.3%	49.7%	59.2%	106	55.2%	88	50.3%	82	48.5%	-1.8%	-1.2%	-10.7%	Decline

Source: Educational Research Analysis.

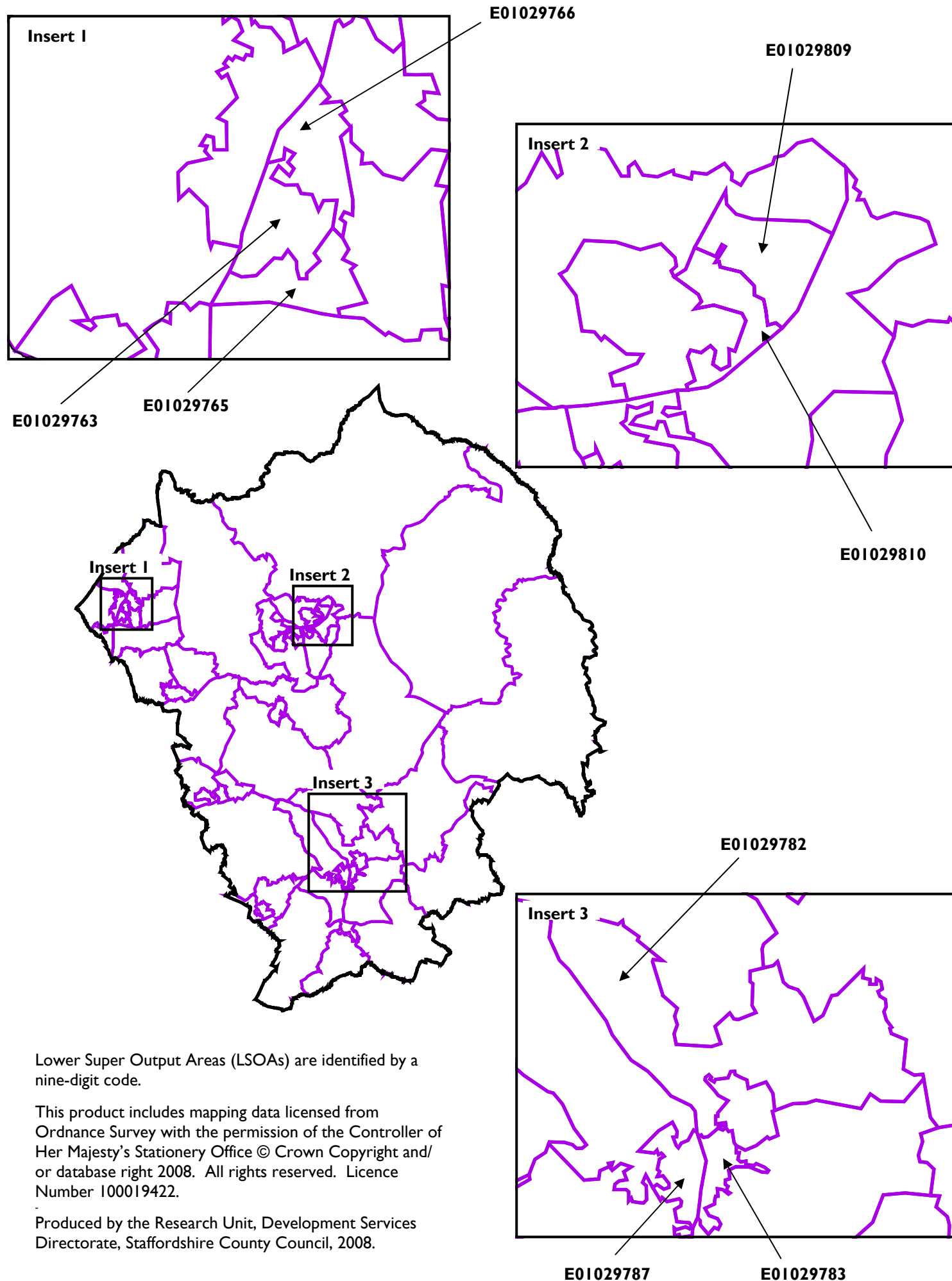
# Free School Meals and Special Educational Needs

	County		District		County		District		County		District		
	Number	%	Number	%	Number	%	Number	%	Number	%			
<b>Free School Meal Eligibility</b>													
Reception to Year 2	11.1%	8.5%	45	9.3%	36	7.2%	34	6.8%	-4.3%	-1.7%			Decline
Year 3 to Year 6	11.0%	8.8%	64	8.9%	63	9.2%	66	9.4%	-1.6%	0.5%			Increase
Year 7 to Year 11	8.7%	6.8%	50	5.3%	68	7.3%	66	7.1%	-1.6%	0.3%			
Year 12 to Year 13	3.0%	2.6%	7	3.5%	1	0.5%	5	2.3%	-0.8%	-0.3%			
<b>Special Educational Needs - Statemented</b>													
Reception to Year 2	1.4%	1.1%	9	1.9%	5	1.0%	3	0.6%	-0.8%	-0.5%			Decline
Year 3 to Year 6	2.7%	1.8%	15	2.1%	16	2.3%	14	2.0%	-0.7%	0.1%			
Year 7 to Year 11	4.5%	3.3%	43	4.6%	39	4.2%	33	3.5%	-0.9%	0.2%			Decline
Year 12 to Year 13	4.0%	2.8%	5	2.5%	9	4.2%	7	3.2%	-0.8%	0.4%			
<b>Special Educational Needs - School Action Plus</b>													
Reception to Year 2	3.3%	2.2%	13	2.7%	14	2.8%	9	1.8%	-1.5%	-0.4%			
Year 3 to Year 6	5.1%	4.6%	33	4.6%	38	5.5%	36	5.1%	0.0%	0.5%			
Year 7 to Year 11	3.9%	3.6%	16	1.7%	18	1.9%	29	3.1%	-0.8%	-0.5%			Increase
Year 12 to Year 13	0.6%	0.4%	0	0.0%	1	0.5%	2	0.9%	0.3%	0.5%			Increase
<b>Special Educational Needs - School Action</b>													
Reception to Year 2	7.2%	5.6%	43	8.8%	42	8.4%	28	5.6%	-1.6%	0.0%			Decline
Year 3 to Year 6	10.7%	8.3%	64	8.9%	70	10.2%	71	10.1%	-0.6%	1.8%			
Year 7 to Year 11	8.8%	10.3%	91	9.6%	88	9.5%	80	8.6%	-0.2%	-1.7%			Decline
Year 12 to Year 13	1.7%	2.5%	0	0.0%	1	0.5%	2	0.9%	-0.8%	-1.6%			Increase

**Key**  
FSM 5% less than  
FSM 5% greater than



**Lower Super Output Areas (LSOA) boundary in Staffordshire Moorlands District  
(Selected key LSOAs for deprivation labelled)**



Lower Super Output Areas (LSOAs) are identified by a nine-digit code.

This product includes mapping data licensed from Ordnance Survey with the permission of the Controller of Her Majesty's Stationery Office © Crown Copyright and/or database right 2008. All rights reserved. Licence Number 100019422.

Produced by the Research Unit, Development Services Directorate, Staffordshire County Council, 2008.

# The Staffordshire IMD 2007 Summary Card:

## Staffordshire Moorlands

This card presents a summary of information from the 2007 update of the national Indices of Deprivation (IMD 2007). It is an attempt to summarise, on one piece of paper, information on deprivation in the area covered by Staffordshire Moorlands District. The key information covered here includes the overall multiple measure of deprivation, seven different domains (types) of deprivation and two indices focusing respectively on income deprivation affecting children and older people. Ten pieces of data for each of the fifty nine Lower Super Output Areas in Staffordshire Moorlands District. Five hundred and ninety bits of information on one piece of paper.

By its very nature this document presents an overview of all deprivation in Staffordshire Moorlands in 2007. Further detail on deprivation in Staffordshire Moorlands District can be found in the complementary, more detailed district reports available from the Staffordshire Observatory website. Also available are the equivalent documents for the other seven districts in Staffordshire and a County document. For further details go to: <http://www.staffordshirepartnership.org.uk/observatory/> or contact Rosanne Cororan on 01785 276538 or email [Rosanne.cororan@staffordshire.gov.uk](mailto:Rosanne.cororan@staffordshire.gov.uk).

### Background to the IMD 2007

- X The English Indices of Deprivation 2007 (ID 2007) are the Government's official measure of multiple deprivation at small area level. The 2007 Indices update information provided in the IMD 2004.
- X The IMD 2007 provides a relative ranking of areas across England according to their level of deprivation.
- X The Index of Multiple Deprivation 2007 (IMD 2007) is based on the small area geography known as Lower Super Output Areas (LSOAs). LSOAs have between 1000 and 3000 people living in them with an average population of 1500 people. In most cases, these are smaller than wards, thus allowing the identification of small pockets of deprivation.
- X The IMD brings together 37 different indicators which cover specific aspects or dimensions of deprivation: Income, Employment, Health and Disability, Education, Skills and Training, Barriers to Housing and Services, Living Environment and Crime. These are weighted and combined to create the overall IMD 2007.
- X The majority of the data underpinning the IMD 2007 represents 2005 although some data covers a number of years, for example an average of 2003-2005.

This is taken from the Guidance for Using the English Indices of Deprivation 2007 produced by Communities and Local Government:  
<http://www.communities.gov.uk/documents/communities/doc/615986>

### Understanding this information graphic

The dots which make up this graphic show the level of deprivation in a Lower Super Output Area (LSOA) compared to the whole of Staffordshire County. The basic rule is; more ink = higher deprivation.

- high level of deprivation
- ◐
- ◑
- low level of deprivation

The colour shading highlights where the LSOA is in the top 10% or 20% most deprived areas in England for that measure of deprivation.

- ...& in top 10% deprived in England
- ◑ ...& in top 10-20% deprived in England

The LSOAs are ranked here according to their overall, multiple deprivation score; most deprived to least deprived. The national ranking (out of 32,482) is shown in grey italics next to the symbol (where 1=most deprived and 32,482=least deprived). The deprivation domain titles have been abbreviated.

### What does this information graphic tell us about deprivation in Staffordshire Moorlands District?

Several general trends can be observed from this graphic of deprivation in Staffordshire Moorlands District. Firstly, deprivation across all domains often, but by no means always, occurs in the same LSOAs. This is evident in the fact that the solid dots and coloured backgrounds cluster at the top of the list of LSOAs.

It is also evident that overall, deprivation around barriers to housing, education, employment and health are relatively higher in Staffordshire Moorlands District than for other types of deprivation. There are five LSOAs in Staffordshire Moorlands District which are in the 10% most deprived in England for barriers to housing (represented by this symbol: ◑). In contrast there are only six LSOAs in the top 10% deprived across all the other (nine) measures. Further, the income domain, and sub-domains: income deprivation affecting children and income deprivation affecting older people have very few areas in Staffordshire Moorlands District which fall in the top 20% deprived in England.

ward name	LSOA code	multiple	IMD rank	income	employment health	education housing crime	environment	children older people	ward name	LSOA code	multiple	IMD rank	income	employment health	education housing crime	environment	children older people	
Biddulph East	E01029765	●	4387	◑	◑	◑	◑	◑	Biddulph North	E01029768	○	19910	○	○	○	○	○	○
Biddulph East	E01029763	●	4688	◑	◑	◑	○	◑	Cheddleton	E01029793	○	20413	○	○	○	○	○	○
Leek North	E01029809	●	5924	◑	◑	◑	○	◑	Biddulph East	E01029764	○	20545	◑	○	○	○	○	○
Leek North	E01029810	●	7575	○	○	◑	○	○	Leek South	E01029813	○	20781	○	○	○	○	○	○
Cheadle North East	E01029782	●	7609	○	◑	○	○	○	Hamps Valley	E01029801	○	20809	○	○	○	◑	○	○
Biddulph East	E01029766	●	7760	○	◑	○	○	○	Cheddleton	E01029792	○	20913	○	○	○	◑	○	○
Cheadle South East	E01029783	●	8822	○	◑	○	○	○	Leek East	E01029806	○	21515	○	○	○	○	○	○
Cheadle West	E01029787	●	9482	○	◑	○	○	○	Checkley	E01029790	○	21626	◑	○	○	○	○	○
Leek South	E01029811	●	10042	○	○	○	○	○	Forsbrook	E01029799	○	21726	○	○	○	○	○	○
Leek East	E01029804	●	10235	○	○	○	○	◑	Brown Edge and Endon	E01029775	○	21966	○	○	○	○	○	○
Leek North	E01029808	●	10705	○	○	○	○	○	Alton	E01029761	○	22260	◑	○	○	○	○	○
Leek South	E01029812	●	10721	○	○	○	○	○	Biddulph West	E01029773	○	22420	○	○	○	○	○	○
Biddulph West	E01029774	●	11230	○	○	○	○	○	Cheadle West	E01029786	○	22720	○	○	○	○	○	○
Leek North	E01029807	●	11749	○	○	○	○	○	Forsbrook	E01029800	○	22920	○	○	○	○	○	○
Dane	E01029797	●	11942	○	○	○	○	○	Bagnall and Stanley	E01029762	○	23073	○	○	○	○	○	○
Manifold	E01029817	●	13961	○	○	○	○	○	Cheadle South East	E01029784	○	23197	○	○	○	○	○	○
Churnet	E01029795	●	14387	○	○	○	○	○	Cellarhead	E01029779	○	23892	○	○	○	○	○	○
Caverswall	E01029778	●	15121	○	○	○	○	○	Cellarhead	E01029780	○	24147	○	○	○	○	○	○
Churnet	E01029796	●	16433	○	○	○	○	○	Biddulph North	E01029769	○	24228	○	○	○	○	○	○
Leek West	E01029814	●	16967	○	○	○	○	○	Checkley	E01029788	○	24447	○	○	○	○	○	○
Ipstones	E01029803	●	17293	○	○	○	○	○	Leek West	E01029815	○	24628	○	○	○	○	○	○
Biddulph West	E01029772	●	17345	○	○	○	○	○	Werrington	E01029819	○	24953	○	○	○	○	○	○
Forsbrook	E01029798	●	17498	○	○	○	○	○	Biddulph Moor	E01029767	○	25005	○	○	○	○	○	○
Leek East	E01029805	●	17672	○	○	○	○	○	Leek West	E01029816	○	25403	○	○	○	○	○	○
Brown Edge and Endon	E01029777	●	17706	○	○	○	○	○	Cheadle West	E01029785	○	25482	○	○	○	○	○	○
Cheddleton	E01029794	●	17933	○	○	○	○	○	Checkley	E01029791	○	27162	○	○	○	○	○	○
Biddulph South	E01029771	●	17962	○	○	○	○	○	Werrington	E01029818	○	27478	○	○	○	○	○	○
Cheadle North East	E01029781	●	18278	○	○	○	○	○	Biddulph North	E01029770	○	27608	○	○	○	○	○	○
Horton	E01029802	●	19398	○	○	○	○	○	Brown Edge and Endon	E01029776	○	30207	○	○	○	○	○	○
Checkley	E01029789	●	19512	○	○	○	○	○										

Only one LSOA is in the 10% most deprived in England for more than one domain. That is the most deprived LSOA in Staffordshire Moorlands District which is in Biddulph East ward and is in the 10% most deprived areas in England for employment deprivation and education deprivation.

There are no LSOAs in Staffordshire Moorlands District which fall into the 10% most deprived in England for either the measure of Income Deprivation Affecting Children or Income Deprivation Affecting Older People. Two LSOAs are in the 20% most deprived areas in England for Income Deprivation Affecting both children and older people. These occur in Biddulph East ward and Leek North ward.

There are clusters of LSOAs in Staffordshire Moorlands district identified as experiencing high levels of deprivation across a number of domains in and around the areas of Biddulph, Leek and Cheadle. The map on the back of this card shows the LSOA boundaries for Staffordshire Moorlands District and highlights some of the key LSOAs discussed here and shown in the graphic (left).

There are ten LSOAs in Staffordshire Moorlands district which fall into the most deprived 20% in England for the measure of Barriers to Housing. Interestingly, eight of these LSOAs score fairly low for other measures of deprivation.

Three LSOAs within Leek North ward, Caverswall ward and Leek East ward fall into the most deprived 20% in England for the Crime domain, despite scoring fairly low for other measures of deprivation.

It is worth noting that some areas in Staffordshire Moorlands District are not in the most deprived in England but are amongst the most deprived in Staffordshire. Where this happens the symbol looks like this: ◑

Interestingly, the opposite also holds true in some cases where areas are not amongst the most deprived in Staffordshire but are amongst the (20%) most deprived in England. Where this happens the symbol looks like this: ◑

This demonstrates the value in using both county and national comparators.