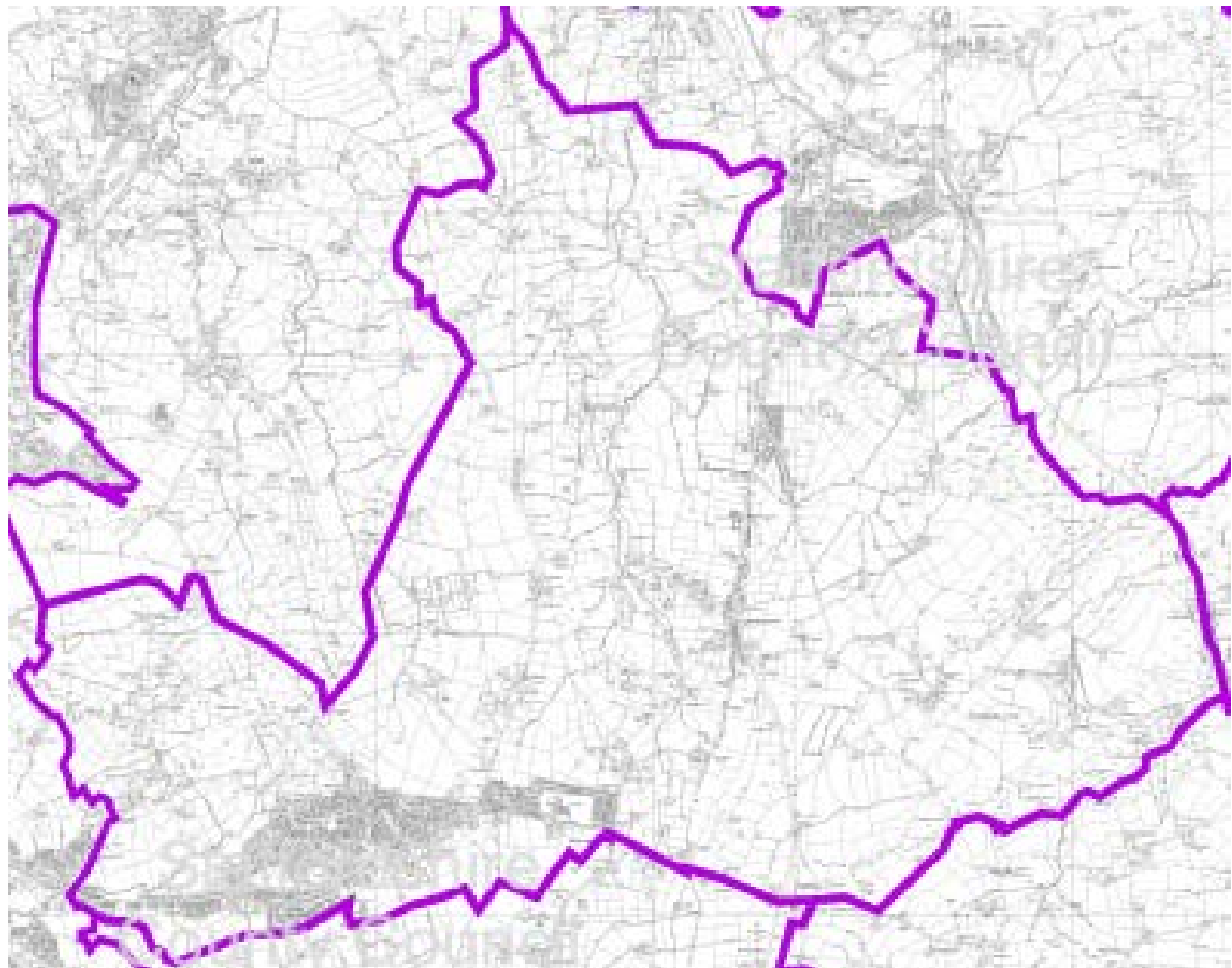


# Community and Learning Partnerships

Data Profile  
Staffordshire Moorlands SM5



This map is reproduced from Ordnance Survey Material with the permission of Ordnance Survey on behalf of the controller of Her Majesty's Stationery Office (C) Crown Copyright. Unauthorised reproduction infringes Crown Copyright and may lead to prosecution or civil proceedings. Staffordshire County Council 100019422. 2005 Produced by the Educational Research Analysis Unit, Children and Life long Learning Directorate, Staffordshire County Council, 2005.

Produced by Educational Research & Analysis  
School Improvement Division  
Staffordshire County Council

# 2001 Census - Social Profile

## Moorside High CLP

Population	Count	Percent	Index
Resident Population	8110		
Males	4016	49.5%	102
Females	4094	50.5%	98
People living in Households	7958	98.1%	100
People Living in Communal Establishment	152	1.9%	103

Age Profile	Count	Percent	Index
0-4	353	4.4%	73
5-14	836	10.3%	80
15	102	1.3%	99
16-19	445	5.5%	112
20-29	741	9.1%	72
30-44	1642	20.2%	89
45-59	1949	24.0%	127
60-74	1428	17.6%	133
75-84	499	6.2%	110
85+	115	1.4%	73

Households	Count	Percent	Index
Total Household Spaces	3346		
Occupied Household Spaces	3232	96.6%	100
Vacant Household Spaces	100	3.0%	94
Second Residences	14	0.4%	66
Average household size	2.46		104
All Single Person Households	650	20.1%	67
All lone pensioner households	408	12.6%	73
All pensioner households	831	25.7%	108
Single Parent Households with dependent children	95	2.9%	46
Single Parent Households with non-dependent children	86	2.7%	87
All households with dependent children	933	28.9%	98
Households with no employed adult and dependent children	37	1.1%	24
All households with 1 or more persons with Limiting Long-term Illness	1208	37.4%	111

Health and Caring	Count	Percent	Index
People not in good health	763	9.4%	104
People with a Limiting Long-term Illness	1612	19.9%	111
People of working age with Limiting Long-term Illness	720	8.9%	109
People who provide unpaid care	1147	14.1%	142
People who provide more than 50 hours of unpaid care	174	2.1%	106

Amenity	Count	Percent	Index
Overcrowded households	53	1.6%	23
No central heating	104	3.2%	38
No WC and bath/shower	12	0.4%	76

Ethnic Group	Count	Percent	Index
White	8027	99.0%	109
Mixed	49	0.6%	46
Indian	7	0.1%	4
Pakistani	8	0.1%	7
Bagladeshi	0	0.0%	0
Other Asian	6	0.1%	15
Black	9	0.1%	5
Chinese	7	0.1%	19
Other Ethnic Groups	9	0.1%	25

Religion	Count	Percent	Index
Christian	6755	83.3%	116
Buddhist	9	0.1%	39
Hindu	0	0.0%	0
Jewish	9	0.1%	21
Muslim	12	0.1%	5
Sikh	3	0.0%	6
Other Religion	11	0.1%	46
No Religion	792	9.8%	67
Religion not Stated	517	6.4%	83

Dwelling Type	Count	Percent	Index
Detached	1611	48.1%	206
Semi-detached	1581	47.3%	144
Terraced	96	2.9%	11
Purpose built flat	12	0.4%	2
Flat in converted / shared house	12	0.4%	8
Flat in commercial building	28	0.8%	70
Caravan/Mobile home/Temporary	6	0.2%	41

Tenure	Count	Percent	Index
Owner Occupied	3038	94.0%	138
Shared Ownership	9	0.3%	43
Local Authority rented	16	0.5%	4
Housing Association / Registered Social Landlord	38	1.2%	19
Privately rented	64	2.0%	23
Other rented	66	2.0%	63

Car Ownership	Count	Percent	Index
Households with no car	320	9.9%	37
Households with 1 car	1396	43.2%	99
Households with 2 cars	1151	35.6%	151
Households with 3 or more cars	365	11.3%	191
Total number of cars in the area	4917		
Average no of cars per household	1.52		138

As a result of rounding some figures may not always equal the total for this area.

Census output is Crown Copyright and is reproduced with the permission of the Controller of HMSO and the Queen's Printer for Scotland

Source: 2001 Census Key Statistics

*An Index has been created to compare the above area with England. The scores for England always equals 100, therefore a score of less than 100 indicates fewer people or households in that category for the area compared with England. A score over 100 indicates more people or households in that category for the area compared with England.*

**Produced by Research Unit, Development Services Department, Staffordshire County Council**

Further details available by telephoning 01785 277359 or email mark.sproston@staffordshire.gov.uk

## 2001 Census - Economic Profile Moorside High CLP

Population <sup>1</sup>	Count	Percent	Index
All people aged 16-74	6205		
All males aged 16-74	3115	50.2%	102
All females aged 16-74	3094	49.9%	98
All people in employment	4143	66.8%	106
All males in employment	2254	72.4%	104
All females in employment	1894	61.2%	107

Economic Activity <sup>1</sup>	Count	Percent	Index
All people economically active	4260	68.7%	103
All people economically inactive	1945	31.3%	95

### All People Economically Active

Employees - Full-time	2511	58.9%	97
Employees - Part-time	799	18.8%	106
Self Employed	661	15.5%	125
Unemployed	92	2.2%	43
Full-time Student	197	4.6%	120

### All People Economically Inactive

Retired	1065	54.8%	134
Full-time student	175	9.0%	64
Looking after family or home	241	12.4%	63
Permanently sick or disabled	334	17.2%	107
Other	130	6.7%	71

Industry of Employment <sup>2</sup>	Count	Percent	Index
Agriculture, Hunting, Forestry and Fishing	65	1.6%	106
Mining and Quarrying	6	0.1%	59
Manufacturing	857	20.7%	139
Electricity, gas and water supply	19	0.5%	64
Construction	310	7.5%	111
Wholesale and Retail trade	742	17.9%	106
Hotels and Catering	158	3.8%	81
Transport, storage and communication	237	5.7%	81
Financial, Real Estate and Business Activity	503	12.1%	67
Public Administration and Defence	220	5.3%	94
Education	332	8.0%	104
Health and Social Work	532	12.8%	120
Other	162	3.9%	75

Qualifications <sup>1</sup>	Count	Percent	Index
No Qualifications	1896	30.6%	106
Level 1 Qualifications	1009	16.3%	98
Level 2 Qualifications	1193	19.2%	99
Level 3 Qualifications	431	6.9%	83
Level 4 or 5 Qualifications	998	16.1%	81
Other Qualification / Level Unknown	678	10.9%	158

Unemployed <sup>1</sup>	Count	Percent	Index
All unemployed	92		
Aged 16-24	12	13.0%	51
Aged 50+	32	34.8%	187
Long-term Unemployed	25	27.2%	90

Occupation Groups <sup>2</sup>	Count	Percent	Index
Managers and Senior Officials	640	15.4%	101
Professional	352	8.5%	76
Assoc Professional and technical	576	13.9%	100
Administrative and Secretarial	566	13.7%	102
Skilled Trade	666	16.1%	139
Personal Services	287	6.9%	101
Sales and Customer Service	285	6.9%	90
Process, plant and machine operatives	359	8.7%	103
Elementary occupations	418	10.1%	86

Socio-Economic Class <sup>1</sup>	Count	Percent	Index
Large Employers and Higher Managerial	218	3.5%	100
Higher Professional	196	3.2%	62
Lower Managerial and Professional	1206	19.4%	104
Intermediate	661	10.7%	112
Small Employers and own account workers	623	10.0%	144
Lower Supervisory and Technical	479	7.7%	109
Semi-routine	640	10.3%	89
Routine	529	8.5%	95
Never worked	49	0.8%	29
Long-term unemployed	25	0.4%	40
Full-time Student	367	5.9%	84
Not Classified	1211	19.5%	110

Hours Worked (Week) <sup>2</sup>	Count	Percent	Index
Males part-time < 15 hours	82	3.6%	105
Males part-time 16-30 hours	133	5.9%	96
Males full-time 31-48 hours	1457	64.6%	98
Males full-time > 49 hours	582	25.8%	107
Females part-time < 15 hours	264	13.9%	99
Females part-time 16-30 hours	591	31.2%	110
Females full-time 31-48 hours	938	49.5%	98
Females full-time >49 hours	101	5.3%	77

Travel to Work <sup>2</sup>	Count	Percent	Index
Work mainly from home	409	9.9%	108
Train, Light Rail, Tram, Metro, Underground	9	0.2%	3
Bus	231	5.6%	74
Motorcycle	39	0.9%	85
Car (as driver or passenger)	3241	78.2%	128
Taxi	5	0.1%	23
Bicycle	27	0.7%	23
Walk	179	4.3%	43
Other	13	0.3%	68

Note: 1 = People aged 16-74  
2 = People Aged 16-74 in employment

As a result of rounding some figures may not always equal the total for this area.

Census output is Crown Copyright and is reproduced with the permission of the Controller of HMSO and the Queen's Printer for Scotland

Source: 2001 Census Key Statistics

An Index has been created to compare the above area with England. The scores for England always equals 100, therefore a score of less than 100 indicates fewer people in that category for the area compared with England. A score over 100 indicates more people in that category for the area compared with England.

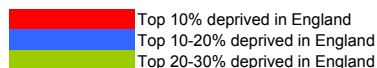
Produced by Research Unit, Development Services Department, Staffordshire County Council

Further details available by telephoning 01785 277359 or email mark.sproston@staffordshire.gov.uk

# Indices of Multiple Deprivation 2007

## Understanding this information

The colour shading highlights where the LSOA is in the top 10%, 20% or 30% most deprived areas in England for that measure of Deprivation.



The LSOAs are ranked here according to their overall multiple deprivation score: most deprived to least deprived. The national ranking (out of 32,482) is shown in the top table, where 1=most deprived and 32,482=least deprived. The bottom table replicates the information but putting the ranking into a percentage, so that it can be seen where the LSOA falls within the whole country. The deprivation domain titles have been abbreviated.

Ward Name	LOWERSOA	IOMD	Income	Employment	Health	Education	Housing	Crime	Living Environment
Cheddleton	E01029794	17933	23631	15992	16591	19907	3847	21177	17959
Cellarhead	E01029779	23892	25767	17368	17643	23338	12106	26746	29082
Cellarhead	E01029780	24147	20961	16222	18095	20250	30889	25015	30800
Werrington	E01029818	27478	26193	19991	16621	24684	28380	28648	30521

Ward Name	LOWERSOA	IOMD	Income	Employment	Health	Education	Housing	Crime	Living Environment
Cheddleton	E01029794	55.2%	72.8%	49.2%	51.1%	61.3%	11.8%	65.2%	55.3%
Cellarhead	E01029779	73.6%	79.3%	53.5%	54.3%	71.8%	37.3%	82.3%	89.5%
Cellarhead	E01029780	74.3%	64.5%	49.9%	55.7%	62.3%	95.1%	77.0%	94.8%
Werrington	E01029818	84.6%	80.6%	61.5%	51.2%	76.0%	87.4%	88.2%	94.0%

## Background to the Indices of Multiple Deprivation 2007

The English Indices of Deprivation 2007 (ID 2007) are the Government's official measure of multiple deprivation at small area level. The 2007 Indices update information provided in the IMD 2004.

The IMD 2007 provides a relative ranking of areas across England according to their level of deprivation.

The Index of Multiple Deprivation 2007 (IMD 2007) is based on the small area geography known as Lower Super Output Areas (LSOAs). LSOAs have between 1000 and 3000 people living in them with an average population of 1500 people. In most cases, these are smaller than wards, thus allowing the identification of small pockets of deprivation.

The IMD brings together 37 different indicators which cover specific aspects or dimensions of deprivation: Income, Employment, Health and Disability, Education, Skills and Training, Barriers to Housing and Services, Living Environment and Crime. These are weighted and combined to create the overall IMD 2007.

The majority of the data underpinning the IMD 2007 represents 2005 although some data covers a number of years, for example an average of 2003-2005.

This is taken from the Guidance for Using the English Indices of Deprivation 2007 produced by Communities and Local Government: <http://www.communities.gov.uk/documents/communities/doc/615986>

## Foundation Stage Profile Attainment

The Foundation Stage Profile allocates a point score for each child in 13 areas of learning. The results below indicate the number and percentage of children who have achieved a score of 6 or above. This threshold has been chosen as it is the expected level of attainment as stipulated by the Department for Children, Schools and Families.

	National	County	District	2005		2006		2007		CLP - National	CLP - County	CLP - District	Trend 2005-07
	2007 (%)	2007 (%)		Number	%	Number	%	Number	%	2007	2007	2007	
Personal, social and emotional development													
Dispositions and attitudes	87.0%	90.9%	94.4%	61	100.0%	45	83.3%	45	95.7%	8.7%	4.8%	1.3%	
Social development	80.0%	86.4%	89.5%	59	96.7%	39	72.2%	44	93.6%	13.6%	7.2%	4.1%	
Emotional development	76.0%	84.4%	88.8%	59	96.7%	41	75.9%	44	93.6%	17.6%	9.2%	4.8%	
Communication, language and literacy													
Language for communication and thinking	78.0%	85.0%	89.9%	58	95.1%	42	77.8%	43	91.5%	13.5%	6.5%	1.6%	
Linking sounds and letters	65.0%	72.0%	77.8%	54	88.5%	39	72.2%	38	80.9%	15.9%	8.9%	3.1%	
Reading	69.0%	78.6%	80.1%	59	96.7%	36	66.7%	36	76.6%	7.6%	-2.0%	-3.5%	
Writing	58.0%	70.1%	75.2%	51	83.6%	38	70.4%	39	83.0%	25.0%	12.9%	7.8%	
Mathematical development													
Calculating	87.0%	90.7%	91.6%	58	95.1%	48	88.9%	47	100.0%	13.0%	9.3%	8.4%	
Numbers as labels and for counting	70.0%	78.6%	80.3%	54	88.5%	40	74.1%	37	78.7%	8.7%	0.1%	-1.6%	
Shapes, space and measures	80.0%	88.4%	90.7%	57	93.4%	45	83.3%	43	91.5%	11.5%	3.1%	0.8%	
Knowledge and understanding of the world	77.0%	85.8%	88.1%	60	98.4%	47	87.0%	47	100.0%	23.0%	14.2%	11.9%	
Physical development	88.0%	92.1%	94.1%	60	98.4%	48	88.9%	47	100.0%	12.0%	7.9%	5.9%	
Creative development	78.0%	84.7%	91.3%	59	96.7%	46	85.2%	45	95.7%	17.7%	11.0%	4.4%	
78 points and 6 or above in PSE and CLL Scales	45.0%	57.5%	63.7%	50	82.0%	29	53.7%	29	61.7%	16.7%	4.2%	-2.0%	

## Key Stage One to Four Attainment

The National Curriculum for Key Stage One through to Key Stage Four runs through Year 1 to Year 11. The expected level of attainment for Key Stage One is Level 2B or above, Key Stage Two is Level 4 or above, Key Stage 3 is Level 5 or above and at Key Stage 4 the new level of expected attainment is 5+ A\*-C including GCSE English and Mathematics. The results below indicate the number and percentage of children who have achieved these thresholds. These thresholds have been chosen as it is the expected level of attainment as stipulated by the Department for Children, Schools and Families.

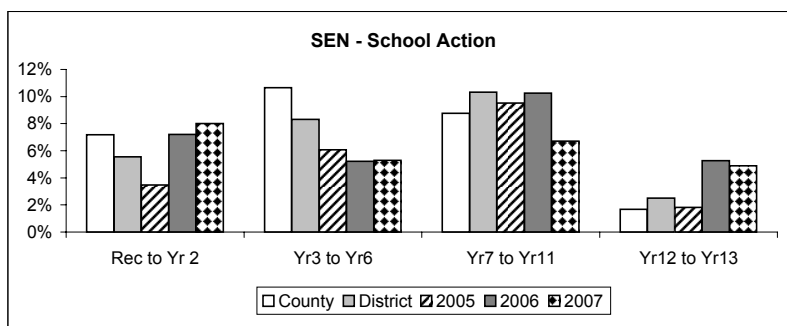
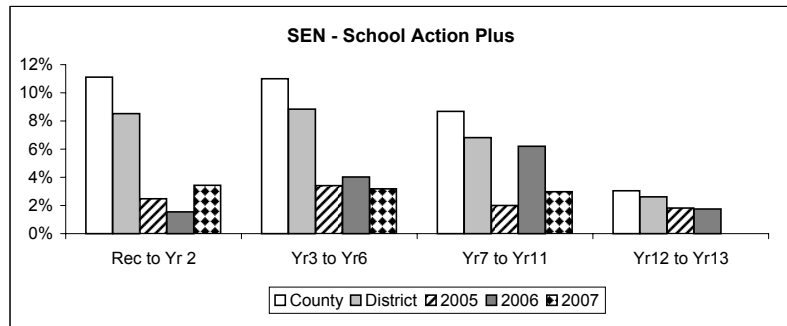
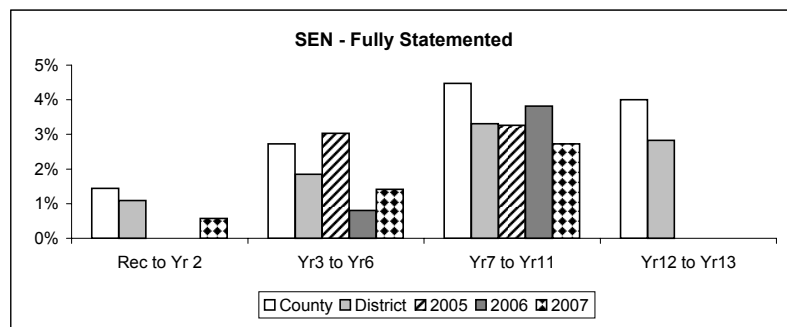
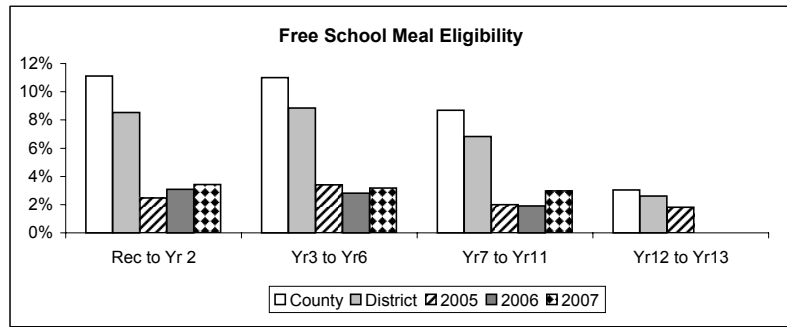
	National	County	District	2005		2006		2007		CLP - National	CLP - County	CLP - District	Trend 2005-07
	2007 (%)	2007 (%)		Number	%	Number	%	Number	%				
KS1 Reading Level 2B+	71.0%	76.2%	75.8%	58	86.6%	61	79.2%	49	76.6%	5.6%	0.4%	0.8%	Decline
KS1 Writing Level 2B+	59.0%	65.2%	66.8%	48	71.6%	50	64.9%	42	65.6%	6.6%	0.4%	-1.2%	
KS1 Mathematics Level 2B+	74.0%	78.1%	78.8%	58	86.6%	61	79.2%	51	79.7%	5.7%	1.6%	0.9%	
KS2 English Level 4+	80.0%	81.0%	80.8%	67	85.9%	44	88.0%	55	84.6%	4.6%	3.6%	3.8%	
KS2 Mathematics Level 4+	77.0%	78.0%	76.1%	60	76.9%	40	80.0%	53	81.5%	4.5%	3.5%	5.4%	Increase
KS2 Science Level 4+	88.0%	90.0%	87.2%	71	91.0%	48	96.0%	58	89.2%	1.2%	-0.8%	2.0%	
KS3 English Level 5+	74.0%	77.0%	80.1%	82	87.2%	69	83.1%	69	93.2%	19.2%	16.2%	13.1%	
KS3 Mathematics Level 5+	76.0%	78.0%	83.4%	87	92.6%	77	90.6%	71	97.3%	21.3%	19.3%	13.9%	
KS3 Science Level 5+	73.0%	75.0%	81.8%	86	92.5%	76	90.5%	69	94.5%	21.5%	19.5%	12.7%	
KS4 5 or more A*-C Grade	62.0%	60.0%	68.8%	56	69.1%	43	60.6%	70	76.1%	14.1%	16.1%	7.3%	
KS4 5 or more A*-C Grade including English & Maths	46.8%	45.8%	53.1%	48	59.3%	37	52.1%	41	44.6%	-2.2%	-1.2%	-8.5%	Decline
KS4 5 or more A*-G Grade	91.7%	93.2%	94.5%	81	100.0%	70	98.6%	92	100.0%	8.3%	6.8%	5.5%	
KS4 2 or more A*-C Grade in Science	50.3%	49.7%	59.2%	64	79.0%	47	66.2%	71	77.2%	26.9%	27.5%	18.0%	

Source: Educational Research Analysis.

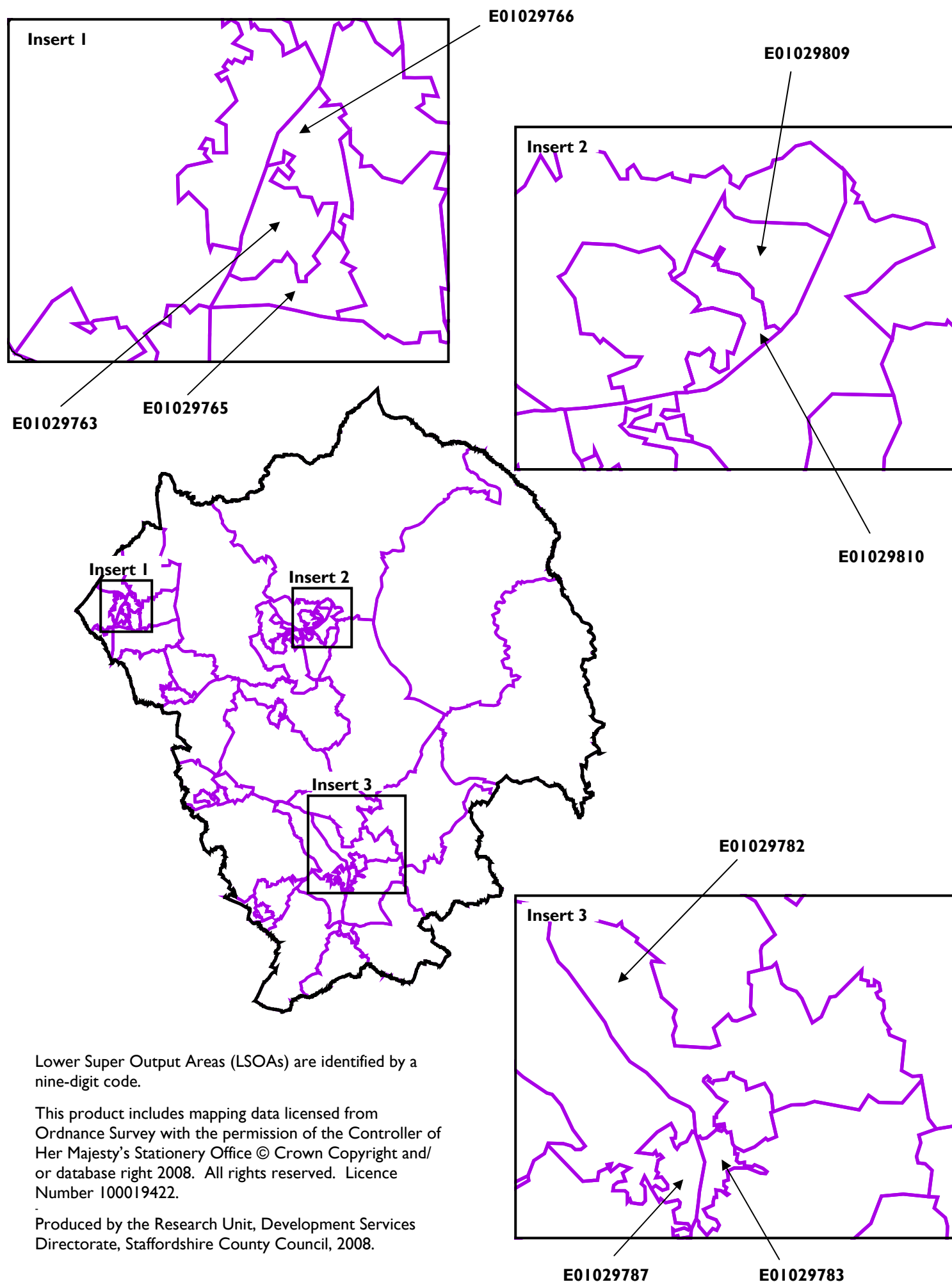
# Free School Meals and Special Educational Needs

	County		District		Number		%		Number		%		Number		%	
	Number	%	Number	%	Number	%	Number	%	Number	%	Number	%	Number	%	Number	%
<b>Free School Meal Eligibility</b>																
Reception to Year 2	11.1%	8.5%	5	2.5%	6	3.1%	6	3.4%	-7.7%	-5.1%	<b>Increase</b>					
Year 3 to Year 6	11.0%	8.8%	9	3.4%	7	2.8%	9	3.2%	-7.8%	-5.7%						
Year 7 to Year 11	8.7%	6.8%	8	2.0%	8	1.9%	12	3.0%	-5.7%	-3.8%						
Year 12 to Year 13	3.0%	2.6%	1	1.8%	0	0.0%	0	0.0%	-3.0%	-2.6%						
<b>Special Educational Needs - Statemented</b>																
Reception to Year 2	1.4%	1.1%	0	0.0%	0	0.0%	1	0.6%	-0.9%	-0.5%						
Year 3 to Year 6	2.7%	1.8%	8	3.0%	2	0.8%	4	1.4%	-1.3%	-0.4%						
Year 7 to Year 11	4.5%	3.3%	13	3.3%	16	3.8%	11	2.7%	-1.7%	-0.6%						
Year 12 to Year 13	4.0%	2.8%	0	0.0%	0	0.0%	0	0.0%	-4.0%	-2.8%						
<b>Special Educational Needs - School Action Plus</b>																
Reception to Year 2	3.3%	2.2%	1	0.5%	3	1.5%	5	2.9%	-0.4%	0.7%	<b>Increase</b>					
Year 3 to Year 6	5.1%	4.6%	12	4.5%	10	4.0%	9	3.2%	-2.0%	-1.4%	<b>Decline</b>					
Year 7 to Year 11	3.9%	3.6%	25	6.3%	26	6.2%	19	4.7%	0.8%	1.1%	<b>Decline</b>					
Year 12 to Year 13	0.6%	0.4%	1	1.8%	1	1.8%	0	0.0%	-0.6%	-0.4%	<b>Decline</b>					
<b>Special Educational Needs - School Action</b>																
Reception to Year 2	7.2%	5.6%	7	3.5%	14	7.2%	14	8.0%	0.8%	2.4%	<b>Increase</b>					
Year 3 to Year 6	10.7%	8.3%	16	6.1%	13	5.2%	15	5.3%	-5.4%	-3.0%						
Year 7 to Year 11	8.8%	10.3%	38	9.5%	43	10.3%	27	6.7%	-2.1%	-3.6%						
Year 12 to Year 13	1.7%	2.5%	1	1.8%	3	5.3%	2	4.9%	3.2%	2.4%						

**Key**  
FSM 5% less than  
Decline  
FSM 5% greater than  
Decline  
Decline



**Lower Super Output Areas (LSOA) boundary in Staffordshire Moorlands District  
(Selected key LSOAs for deprivation labelled)**



Lower Super Output Areas (LSOAs) are identified by a nine-digit code.

This product includes mapping data licensed from Ordnance Survey with the permission of the Controller of Her Majesty's Stationery Office © Crown Copyright and/or database right 2008. All rights reserved. Licence Number 100019422.

Produced by the Research Unit, Development Services Directorate, Staffordshire County Council, 2008.

# The Staffordshire IMD 2007 Summary Card:

## Staffordshire Moorlands

This card presents a summary of information from the 2007 update of the national Indices of Deprivation (IMD 2007). It is an attempt to summarise, on one piece of paper, information on deprivation in the area covered by Staffordshire Moorlands District. The key information covered here includes the overall multiple measure of deprivation, seven different domains (types) of deprivation and two indices focusing respectively on income deprivation affecting children and older people. Ten pieces of data for each of the fifty nine Lower Super Output Areas in Staffordshire Moorlands District. Five hundred and ninety bits of information on one piece of paper.

By its very nature this document presents an overview of all deprivation in Staffordshire Moorlands in 2007. Further detail on deprivation in Staffordshire Moorlands District can be found in the complementary, more detailed district reports available from the Staffordshire Observatory website. Also available are the equivalent documents for the other seven districts in Staffordshire and a County document. For further details go to: <http://www.staffordshirepartnership.org.uk/observatory/> or contact Rosanne Cororan on 01785 276538 or email [Rosanne.cororan@staffordshire.gov.uk](mailto:Rosanne.cororan@staffordshire.gov.uk).

### Background to the IMD 2007

- X The English Indices of Deprivation 2007 (ID 2007) are the Government's official measure of multiple deprivation at small area level. The 2007 Indices update information provided in the IMD 2004.
- X The IMD 2007 provides a relative ranking of areas across England according to their level of deprivation.
- X The Index of Multiple Deprivation 2007 (IMD 2007) is based on the small area geography known as Lower Super Output Areas (LSOAs). LSOAs have between 1000 and 3000 people living in them with an average population of 1500 people. In most cases, these are smaller than wards, thus allowing the identification of small pockets of deprivation.
- X The IMD brings together 37 different indicators which cover specific aspects or dimensions of deprivation: Income, Employment, Health and Disability, Education, Skills and Training, Barriers to Housing and Services, Living Environment and Crime. These are weighted and combined to create the overall IMD 2007.
- X The majority of the data underpinning the IMD 2007 represents 2005 although some data covers a number of years, for example an average of 2003-2005.

This is taken from the Guidance for Using the English Indices of Deprivation 2007 produced by Communities and Local Government:  
<http://www.communities.gov.uk/documents/communities/doc/615986>



### Understanding this information graphic

The dots which make up this graphic show the level of deprivation in a Lower Super Output Area (LSOA) compared to the whole of Staffordshire County. The basic rule is; more ink = higher deprivation.

- high level of deprivation
- ◐ medium level of deprivation
- ◑ low level of deprivation

The colour shading highlights where the LSOA is in the top 10% or 20% most deprived areas in England for that measure of deprivation.

- ...& in top 10% deprived in England
- ◑ ...& in top 10-20% deprived in England

The LSOAs are ranked here according to their overall, multiple deprivation score; most deprived to least deprived. The national ranking (out of 32,482) is shown in grey italics next to the symbol (where 1=most deprived and 32,482=least deprived). The deprivation domain titles have been abbreviated.

### What does this information graphic tell us about deprivation in Staffordshire Moorlands District?

Several general trends can be observed from this graphic of deprivation in Staffordshire Moorlands District. Firstly, deprivation across all domains often, but by no means always, occurs in the same LSOAs. This is evident in the fact that the solid dots and coloured backgrounds cluster at the top of the list of LSOAs.

It is also evident that overall, deprivation around barriers to housing, education, employment and health are relatively higher in Staffordshire Moorlands District than for other types of deprivation. There are five LSOAs in Staffordshire Moorlands District which are in the 10% most deprived in England for barriers to housing (represented by this symbol: ●). In contrast there are only six LSOAs in the top 10% deprived across all the other (nine) measures. Further, the income domain, and sub-domains: income deprivation affecting children and income deprivation affecting older people have very few areas in Staffordshire Moorlands District which fall in the top 20% deprived in England.

ward name	LSOA code	multiple	IMD rank	income	employment health	education housing crime	environment	children older people	ward name	LSOA code	multiple	IMD rank	income	employment health	education housing crime	environment	children older people														
Biddulph East	E01029765	●	4387	●	■	●	■	○	●	○	●	4387	●	●	○	○	○	○	Biddulph North	E01029768	○	19910	○	○	○	○	○	○	○	○	○
Biddulph East	E01029763	●	4688	●	○	○	○	○	●	○	○	4688	●	○	○	○	○	○	Cheddleton	E01029793	○	20413	○	○	○	○	○	○	○	○	
Leek North	E01029809	●	5924	●	○	○	○	○	●	○	○	5924	●	○	○	○	○	○	Biddulph East	E01029764	○	20545	○	○	○	○	○	○	○	○	○
Leek North	E01029810	○	7575	○	○	○	○	○	○	○	○	7575	○	○	○	○	○	○	Leek South	E01029813	○	20781	○	○	○	○	○	○	○	○	○
Cheadle North East	E01029782	○	7609	○	○	○	○	○	○	○	○	7609	○	○	○	○	○	○	Hamps Valley	E01029801	○	20809	○	○	○	○	○	○	○	○	○
Biddulph East	E01029766	○	7760	○	○	○	○	○	○	○	○	7760	○	○	○	○	○	○	Cheddleton	E01029792	○	20913	○	○	○	○	○	○	○	○	○
Cheadle South East	E01029783	○	8822	○	○	○	○	○	○	○	○	8822	○	○	○	○	○	○	Leek East	E01029806	○	21515	○	○	○	○	○	○	○	○	○
Cheadle West	E01029787	○	9482	○	○	○	○	○	○	○	○	9482	○	○	○	○	○	○	Checkley	E01029790	○	21626	○	○	○	○	○	○	○	○	
Leek South	E01029811	○	10042	○	○	○	○	○	○	○	○	10042	○	○	○	○	○	○	Forsbrook	E01029799	○	21726	○	○	○	○	○	○	○	○	
Leek East	E01029804	○	10235	○	○	○	○	○	○	○	○	10235	○	○	○	○	○	○	Brown Edge and Endon	E01029775	○	21966	○	○	○	○	○	○	○	○	
Leek North	E01029808	○	10705	○	○	○	○	○	○	○	○	10705	○	○	○	○	○	○	Alton	E01029761	○	22260	○	○	○	○	○	○	○	○	
Leek South	E01029812	○	10721	○	○	○	○	○	○	○	○	10721	○	○	○	○	○	○	Biddulph West	E01029773	○	22420	○	○	○	○	○	○	○	○	○
Biddulph West	E01029774	○	11230	○	○	○	○	○	○	○	○	11230	○	○	○	○	○	○	Cheadle West	E01029786	○	22720	○	○	○	○	○	○	○	○	○
Leek North	E01029807	○	11749	○	○	○	○	○	○	○	○	11749	○	○	○	○	○	○	Forsbrook	E01029800	○	22920	○	○	○	○	○	○	○	○	
Dane	E01029797	○	11942	○	○	○	○	○	○	○	○	11942	○	○	○	○	○	○	Bagnall and Stanley	E01029762	○	23073	○	○	○	○	○	○	○	○	○
Manifold	E01029817	○	13961	○	○	○	○	○	○	○	○	13961	○	○	○	○	○	○	Cheadle South East	E01029784	○	23197	○	○	○	○	○	○	○	○	○
Churnet	E01029795	○	14387	○	○	○	○	○	○	○	○	14387	○	○	○	○	○	○	Cellarhead	E01029779	○	23892	○	○	○	○	○	○	○	○	○
Caverswall	E01029778	○	15121	○	○	○	○	○	○	○	○	15121	○	○	○	○	○	○	Cellarhead	E01029780	○	24147	○	○	○	○	○	○	○	○	
Churnet	E01029796	○	16433	○	○	○	○	○	○	○	○	16433	○	○	○	○	○	○	Biddulph North	E01029769	○	24228	○	○	○	○	○	○	○	○	○
Leek West	E01029814	○	16967	○	○	○	○	○	○	○	○	16967	○	○	○	○	○	○	Checkley	E01029788	○	24447	○	○	○	○	○	○	○	○	
Ipstones	E01029803	○	17293	○	○	○	○	○	○	○	○	17293	○	○	○	○	○	○	Leek West	E01029815	○	24628	○	○	○	○	○	○	○	○	○
Biddulph West	E01029772	○	17345	○	○	○	○	○	○	○	○	17345	○	○	○	○	○	○	Werrington	E01029819	○	24953	○	○	○	○	○	○	○	○	○
Forsbrook	E01029798	○	17498	○	○	○	○	○	○	○	○	17498	○	○	○	○	○	○	Biddulph Moor	E01029767	○	25005	○	○	○	○	○	○	○	○	○
Leek East	E01029805	○	17672	○	○	○	○	○	○	○	○	17672	○	○	○	○	○	○	Leek West	E01029816	○	25403	○	○	○	○	○	○	○	○	○
Brown Edge and Endon	E01029777	○	17706	○	○	○	○	○	○	○	○	17706	○	○	○	○	○	○	Cheadle West	E01029785	○	25482	○	○	○	○	○	○	○	○	
Cheddleton	E01029794	○	17933	○	○	○	○	○	○	○	○	17933	○	○	○	○	○	○	Checkley	E01029791	○	27162	○	○	○	○	○	○	○	○	
Biddulph South	E01029771	○	17962	○	○	○	○	○	○	○	○	17962	○	○	○	○	○	○	Werrington	E01029818	○	27478	○	○	○	○	○	○	○	○	
Cheadle North East	E01029781	○	18278	○	○	○	○	○	○	○	○	18278	○	○	○	○	○	○	Biddulph North	E01029770	○	27608	○	○	○	○	○	○	○	○	
Horton	E01029802	○	19398	○	○	○	○	○	○	○	○	19398	○	○	○	○	○	○	Brown Edge and Endon	E01029776	○	30207	○	○	○	○	○	○	○	○	
Checkley	E01029789	○	19512	○	○	○	○	○	○	○	○	19512	○	○	○	○	○	○													

Only one LSOA is in the 10% most deprived in England for more than one domain. That is the most deprived LSOA in Staffordshire Moorlands District which is in Biddulph East ward and is in the 10% most deprived areas in England for employment deprivation and education deprivation.

There are no LSOAs in Staffordshire Moorlands District which fall into the 10% most deprived in England for either the measure of Income Deprivation Affecting Children or Income Deprivation Affecting Older People. Two LSOAs are in the 20% most deprived areas in England for Income Deprivation Affecting both children and older people. These occur in Biddulph East ward and Leek North ward.

There are clusters of LSOAs in Staffordshire Moorlands district identified as experiencing high levels of deprivation across a number of domains in and around the areas of Biddulph, Leek and Cheadle. The map on the back of this card shows the LSOA boundaries for Staffordshire Moorlands District and highlights some of the key LSOAs discussed here and shown in the graphic (left).

There are ten LSOAs in Staffordshire Moorlands district which fall into the most deprived 20% in England for the measure of Barriers to Housing. Interestingly, eight of these LSOAs score fairly low for other measures of deprivation.

Three LSOAs within Leek North ward, Caverswall ward and Leek East ward fall into the most deprived 20% in England for the Crime domain, despite scoring fairly low for other measures of deprivation.

It is worth noting that some areas in Staffordshire Moorlands District are not in the most deprived in England but are amongst the most deprived in Staffordshire. Where this happens the symbol looks like this: ●

Interestingly, the opposite also holds true in some cases where areas are not amongst the most deprived in Staffordshire but are amongst the (20%) most deprived in England. Where this happens the symbol looks like this: ◑

This demonstrates the value in using both county and national comparators.