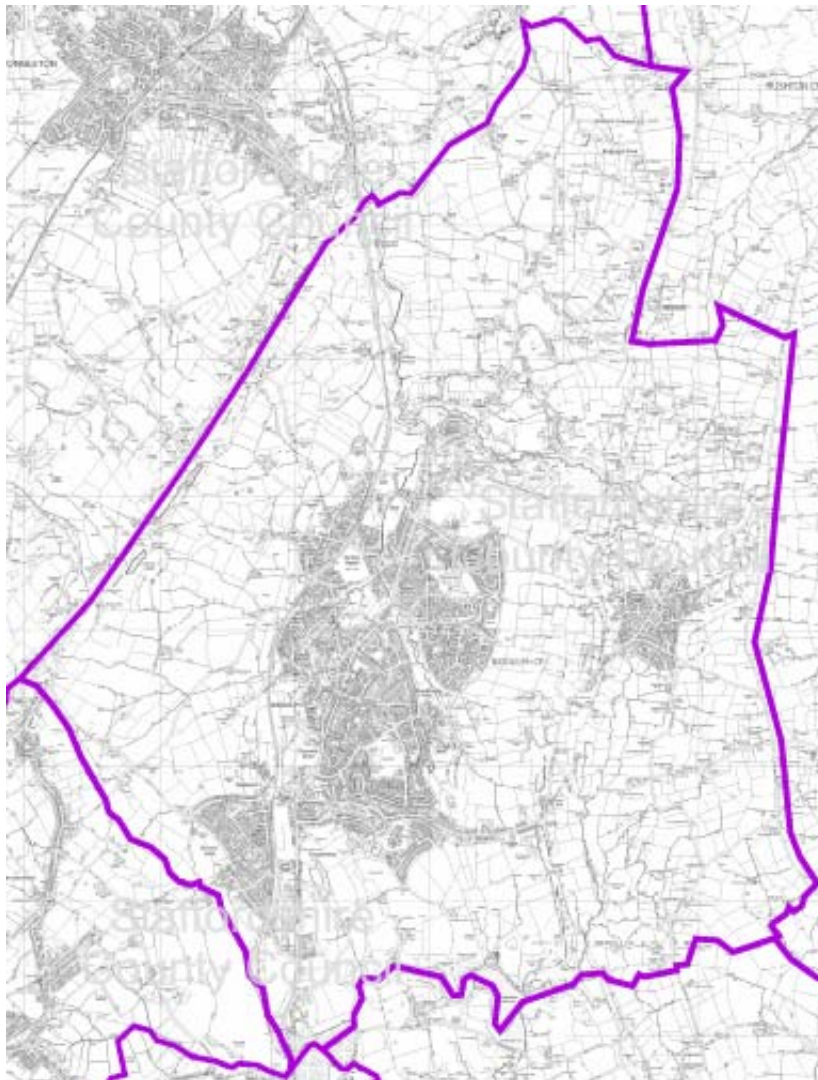


Community and Learning Partnerships

Data Profile

Staffordshire Moorlands SM1



This map is reproduced from Ordnance Survey Material with the permission of Ordnance Survey on behalf of the controller of Her Majesty's Stationery Office (C) Crown Copyright. Unauthorised reproduction infringes Crown Copyright and may lead to prosecution or civil proceedings. Staffordshire County Council 100019422. 2005 Produced by the Educational Research Analysis Unit, Children and Life long Learning Directorate, Staffordshire County Council, 2005.

Produced by Educational Research & Analysis
School Improvement Division
Staffordshire County Council

2001 Census - Social Profile

Biddulph High CLP

Population	Count	Percent	Index
Resident Population	19512		
Males	9557	49.0%	101
Females	9955	51.0%	99
People living in Households	19389	99.4%	101
People Living in Communal Establishment	123	0.6%	35

Age Profile	Count	Percent	Index
0-4	1040	5.3%	90
5-14	2414	12.4%	96
15	265	1.4%	107
16-19	880	4.5%	92
20-29	2139	11.0%	87
30-44	4199	21.5%	95
45-59	4281	21.9%	116
60-74	2924	15.0%	113
75-84	1072	5.5%	98
85+	297	1.5%	78

Households	Count	Percent	Index
Total Household Spaces	8371		
Occupied Household Spaces	8062	96.3%	100
Vacant Household Spaces	286	3.4%	107
Second Residences	23	0.3%	43
Average household size	2.40		102
All Single Person Households	1957	24.3%	81
All lone pensioner households	1051	13.0%	90
All pensioner households	1965	24.4%	103
Single Parent Households with dependent children	452	5.6%	87
Single Parent Households with non-dependent children	218	2.7%	89
All households with dependent children	2426	30.1%	102
Households with no employed adult and dependent children	303	3.8%	78
All households with 1 or more persons with Limiting Long-term Illness	3106	38.5%	115

Health and Caring	Count	Percent	Index
People not in good health	1990	10.2%	113
People with a Limiting Long-term Illness	4045	20.7%	116
People of working age with Limiting Long-term Illness	1863	9.5%	117
People who provide unpaid care	2349	12.0%	121
People who provide more than 50 hours of unpaid care	490	2.5%	124

Amenity	Count	Percent	Index
Overcrowded households	280	3.5%	49
No central heating	395	4.9%	57
No WC and bath/shower	6	0.1%	15

Ethnic Group	Count	Percent	Index
White	19396	99.4%	109
Mixed	61	0.3%	24
Indian	11	0.1%	3
Pakistani	0	0.0%	0
Bagladeshi	0	0.0%	0
Other Asian	9	0.0%	10
Black	12	0.1%	3
Chinese	23	0.1%	26
Other Ethnic Groups	3	0.0%	4

Religion	Count	Percent	Index
Christian	15915	81.6%	114
Buddhist	9	0.0%	16
Hindu	3	0.0%	1
Jewish	9	0.0%	9
Muslim	10	0.1%	2
Sikh	3	0.0%	2
Other Religion	39	0.2%	68
No Religion	2218	11.4%	78
Religion not Stated	1306	6.7%	87

Dwelling Type	Count	Percent	Index
Detached	3440	41.1%	176
Semi-detached	3441	41.2%	125
Terraced	1186	14.2%	53
Purpose built flat	204	2.4%	17
Flat in converted / shared house	34	0.4%	9
Flat in commercial building	51	0.6%	51
Caravan/Mobile home/Temporary	5	0.1%	14

Tenure	Count	Percent	Index
Owner Occupied	6539	81.1%	119
Shared Ownership	22	0.3%	42
Local Authority rented	465	5.8%	44
Housing Association / Registered Social Landlord	481	6.0%	99
Privately rented	373	4.6%	53
Other rented	180	2.2%	69

Car Ownership	Count	Percent	Index
Households with no car	1435	17.8%	66
Households with 1 car	3567	44.2%	101
Households with 2 cars	2366	29.3%	125
Households with 3 or more cars	695	8.6%	146
Total number of cars in the area	10603		
Average no of cars per household	1.32		119

As a result of rounding some figures may not always equal the total for this area.

Census output is Crown Copyright and is reproduced with the permission of the Controller of HMSO and the Queen's Printer for Scotland

Source: 2001 Census Key Statistics

An Index has been created to compare the above area with England. The scores for England always equals 100, therefore a score of less than 100 indicates fewer people or households in that category for the area compared with England. A score over 100 indicates more people or households in that category for the area compared with England.

Produced by Research Unit, Development Services Department, Staffordshire County Council

Further details available by telephoning 01785 277359 or email mark.sproston@staffordshire.gov.uk

2001 Census - Economic Profile

Biddulph High CLP

Population ¹	Count	Percent	Index
All people aged 16-74	14423		
All males aged 16-74	7161	49.6%	101
All females aged 16-74	7263	50.4%	99
All people in employment	9264	64.2%	102
All males in employment	5096	71.2%	102
All females in employment	4167	57.4%	101

Economic Activity ¹	Count	Percent	Index
All people economically active	9640	66.8%	100
All people economically inactive	4783	33.2%	100

All People Economically Active

Employees - Full-time	6113	63.4%	104
Employees - Part-time	1698	17.6%	100
Self Employed	1180	12.2%	98
Unemployed	340	3.5%	70
Full-time Student	309	3.2%	83

All People Economically Inactive

Retired	2253	47.1%	115
Full-time student	361	7.5%	54
Looking after family or home	800	16.7%	85
Permanently sick or disabled	1031	21.6%	135
Other	338	7.1%	76

Industry of Employment ²

Industry of Employment ²	Count	Percent	Index
Agriculture, Hunting, Forestry and Fishing	136	1.5%	99
Mining and Quarrying	43	0.5%	188
Manufacturing	2556	27.6%	186
Electricity, gas and water supply	41	0.4%	62
Construction	574	6.2%	92
Wholesale and Retail trade	1666	18.0%	107
Hotels and Catering	281	3.0%	64
Transport, storage and communication	579	6.3%	88
Financial, Real Estate and Business Activity	1064	11.5%	64
Public Administration and Defence	357	3.9%	68
Education	605	6.5%	84
Health and Social Work	989	10.7%	100
Other	373	4.0%	77

Qualifications ¹

Qualifications ¹	Count	Percent	Index
No Qualifications	5135	35.6%	123
Level 1 Qualifications	2531	17.5%	106
Level 2 Qualifications	2675	18.5%	96
Level 3 Qualifications	914	6.3%	76
Level 4 or 5 Qualifications	1962	13.6%	68
Other Qualification / Level Unknown	1206	8.4%	121

Unemployed ¹

Unemployed ¹	Count	Percent	Index
All unemployed	340		
Aged 16-24	105	30.9%	120
Aged 50+	57	16.8%	90
Long-term Unemployed	73	21.5%	71

Occupation Groups ²	Count	Percent	Index
Managers and Senior Officials	1241	13.4%	88
Professional	735	7.9%	71
Assoc Professional and technical	1109	12.0%	87
Administrative and Secretarial	990	10.7%	80
Skilled Trade	1487	16.1%	139
Personal Services	750	8.1%	118
Sales and Customer Service	685	7.4%	97
Process, plant and machine operatives	1240	13.4%	159
Elementary occupations	1023	11.0%	94

Socio-Economic Class ¹

Socio-Economic Class ¹	Count	Percent	Index
Large Employers and Higher Managerial	431	3.0%	85
Higher Professional	440	3.1%	60
Lower Managerial and Professional	2340	16.2%	87
Intermediate	1141	7.9%	83
Small Employers and own account workers	1116	7.7%	111
Lower Supervisory and Technical	1333	9.2%	130
Semi-routine	2009	13.9%	120
Routine	1759	12.2%	135
Never worked	164	1.1%	42
Long-term unemployed	73	0.5%	50
Full-time Student	663	4.6%	65
Not Classified	2957	20.5%	116

Hours Worked (Week) ²

Hours Worked (Week) ²	Count	Percent	Index
Males part-time < 15 hours	152	3.0%	86
Males part-time 16-30 hours	238	4.7%	76
Males full-time 31-48 hours	3537	69.4%	105
Males full-time > 49 hours	1169	22.9%	95
Females part-time < 15 hours	562	13.5%	96
Females part-time 16-30 hours	1206	28.9%	102
Females full-time 31-48 hours	2183	52.4%	103
Females full-time >49 hours	216	5.2%	75

Travel to Work ²

Travel to Work ²	Count	Percent	Index
Work mainly from home	830	9.0%	98
Train, Light Rail, Tram, Metro, Underground	37	0.4%	5
Bus	386	4.2%	55
Motorcycle	66	0.7%	64
Car (as driver or passenger)	7221	77.9%	128
Taxi	23	0.2%	48
Bicycle	79	0.9%	30
Walk	586	6.3%	63
Other	30	0.3%	70

Note: 1 = People aged 16-74
2 = People Aged 16-74 in employment

As a result of rounding some figures may not always equal the total for this area.

Census output is Crown Copyright and is reproduced with the permission of the Controller of HMSO and the Queen's Printer for Scotland

Source: 2001 Census Key Statistics

An Index has been created to compare the above area with England. The scores for England always equals 100, therefore a score of less than 100 indicates fewer people in that category for the area compared with England. A score over 100 indicates more people in that category for the area compared with England.

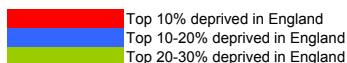
Produced by Research Unit, Development Services Department, Staffordshire County Council

Further details available by telephoning 01785 277359 or email mark.sproston@staffordshire.gov.uk

Indices of Multiple Deprivation 2007

Understanding this information

The colour shading highlights where the LSOA is in the top 10%, 20% or 30% most deprived areas in England for that measure of Deprivation.



The LSOAs are ranked here according to their overall multiple deprivation score: most deprived to least deprived. The national ranking (out of 32,482) is shown in the top table, where 1=most deprived and 32,482=least deprived. The bottom table replicates the information but putting the ranking into a percentage, so that it can be seen where the LSOA falls within the whole country. The deprivation domain titles have been abbreviated.

Ward Name	LOWERSOA	IOMD	Income	Employment	Health	Education	Housing	Crime	Living Environment
Biddulph East	E01029765	4387	5849	2757	3832	1335	23394	8823	15826
Biddulph East	E01029763	4688	4626	3483	2533	3612	28046	5808	17310
Biddulph East	E01029766	7760	9478	4279	4172	5351	28823	13156	19046
Biddulph West	E01029774	11230	11963	7755	8667	12041	29175	12682	10030
Biddulph West	E01029772	17345	20140	12913	14387	12119	17575	19023	21224
Biddulph South	E01029771	17962	20924	14447	11868	16438	13211	15251	28331
Biddulph North	E01029768	19910	23298	12984	15141	15834	16982	22627	27411
Biddulph East	E01029764	20545	16657	18455	13731	16478	28086	17765	29295
Biddulph West	E01029773	22420	25739	17656	16079	20380	14536	19319	26118
Biddulph North	E01029769	24228	27889	18654	20337	26802	8486	22654	25380
Biddulph Moor	E01029767	25005	26429	15547	17215	24036	25858	28754	23113
Biddulph North	E01029770	27608	29196	21564	21758	22952	15971	24634	32022

Ward Name	LOWERSOA	IOMD	Income	Employment	Health	Education	Housing	Crime	Living Environment
Biddulph East	E01029765	13.5%	18.0%	8.5%	11.8%	4.1%	72.0%	27.2%	48.7%
Biddulph East	E01029763	14.4%	14.2%	10.7%	7.8%	11.1%	86.3%	17.9%	53.3%
Biddulph East	E01029766	23.9%	29.2%	13.2%	12.8%	16.5%	88.7%	40.5%	58.6%
Biddulph West	E01029774	34.6%	36.8%	23.9%	26.7%	37.1%	89.8%	39.0%	30.9%
Biddulph West	E01029772	53.4%	62.0%	39.8%	44.3%	37.3%	54.1%	58.6%	65.3%
Biddulph South	E01029771	55.3%	64.4%	44.5%	36.5%	50.6%	40.7%	47.0%	87.2%
Biddulph North	E01029768	61.3%	71.7%	40.0%	46.6%	48.7%	52.3%	69.7%	84.4%
Biddulph East	E01029764	63.3%	51.3%	56.8%	42.3%	50.7%	86.5%	54.7%	90.2%
Biddulph West	E01029773	69.0%	79.2%	54.4%	49.5%	62.7%	44.8%	59.5%	80.4%
Biddulph North	E01029769	74.6%	85.9%	57.4%	62.6%	82.5%	26.1%	69.7%	78.1%
Biddulph Moor	E01029767	77.0%	81.4%	47.9%	53.0%	74.0%	79.6%	88.5%	71.2%
Biddulph North	E01029770	85.0%	89.9%	66.4%	67.0%	70.7%	49.2%	75.8%	98.6%

Background to the Indices of Multiple Deprivation 2007

The English Indices of Deprivation 2007 (ID 2007) are the Government's official measure of multiple deprivation at small area level. The 2007 Indices update information provided in the IMD 2004.

The IMD 2007 provides a relative ranking of areas across England according to their level of deprivation.

The Index of Multiple Deprivation 2007 (IMD 2007) is based on the small area geography known as Lower Super Output Areas (LSOAs). LSOAs have between 1000 and 3000 people living in them with an average population of 1500 people. In most cases, these are smaller than wards, thus allowing the identification of small pockets of deprivation.

The IMD brings together 37 different indicators which cover specific aspects or dimensions of deprivation: Income, Employment, Health and Disability, Education, Skills and Training, Barriers to Housing and Services, Living Environment and Crime. These are weighted and combined to create the overall IMD 2007.

The majority of the data underpinning the IMD 2007 represents 2005 although some data covers a number of years, for example an average of 2003-2005.

This is taken from the Guidance for Using the English Indices of Deprivation 2007 produced by Communities and Local Government:
<http://www.communities.gov.uk/documents/communities/doc/615986>

Foundation Stage Profile Attainment

The Foundation Stage Profile allocates a point score for each child in 13 areas of learning. The results below indicate the number and percentage of children who have achieved a score of 6 or above. This threshold has been chosen as it is the expected level of attainment as stipulated by the Department for Children, Schools and Families.

	National	County	District	2005		2006		2007		CLP -	CLP -	CLP -	Trend
	2007 (%)	2007 (%)		Number	%	Number	%	Number	%	National 2007	County 2007	District 2007	
Personal, social and emotional development													
Dispositions and attitudes	87.0%	90.9%	94.4%	164	89.1%	159	88.8%	157	92.9%	5.9%	2.0%	-1.5%	
Social development	80.0%	86.4%	89.5%	161	87.5%	161	89.9%	152	89.9%	9.9%	3.5%	0.4%	
Emotional development	76.0%	84.4%	88.8%	163	88.6%	154	86.0%	160	94.7%	18.7%	10.3%	5.9%	
Communication, language and literacy													
Language for communication and thinking	78.0%	85.0%	89.9%	156	84.8%	159	88.8%	159	94.1%	16.1%	9.1%	4.2%	Increase
Linking sounds and letters	65.0%	72.0%	77.8%	119	64.7%	134	74.9%	128	75.7%	10.7%	3.7%	-2.1%	Increase
Reading	69.0%	78.6%	80.1%	149	81.0%	150	83.8%	137	81.1%	12.1%	2.5%	1.0%	
Writing	58.0%	70.1%	75.2%	108	58.7%	127	70.9%	114	67.5%	9.5%	-2.6%	-7.7%	
Mathematical development													
Calculating	87.0%	90.7%	91.6%	158	85.9%	161	89.9%	153	90.5%	3.5%	-0.2%	-1.1%	Increase
Numbers as labels and for counting	70.0%	78.6%	80.3%	129	70.1%	141	78.8%	144	85.2%	15.2%	6.6%	4.9%	Increase
Shapes, space and measures	80.0%	88.4%	90.7%	161	87.5%	157	87.7%	153	90.5%	10.5%	2.1%	-0.2%	Increase
Knowledge and understanding of the world	77.0%	85.8%	88.1%	158	85.9%	162	90.5%	155	91.7%	14.7%	5.9%	3.6%	Increase
Physical development	88.0%	92.1%	94.1%	169	91.8%	166	92.7%	161	95.3%	7.3%	3.2%	1.2%	Increase
Creative development	78.0%	84.7%	91.3%	153	83.2%	145	81.0%	156	92.3%	14.3%	7.6%	1.0%	
78 points and 6 or above in PSE and CLL Scales	45.0%	57.5%	63.7%	90	48.9%	107	59.8%	105	62.1%	17.1%	4.6%	-1.6%	Increase

Key Stage One to Four Attainment

The National Curriculum for Key Stage One through to Key Stage Four runs through Year 1 to Year 11. The expected level of attainment for Key Stage One is Level 2B or above, Key Stage Two is Level 4 or above, Key Stage 3 is Level 5 or above and at Key Stage 4 the new level of expected attainment is 5+ A*-C including GCSE English and Mathematics. The results below indicate the number and percentage of children who have achieved these thresholds. These thresholds have been chosen as it is the expected level of attainment as stipulated by the Department for Children, Schools and Families.

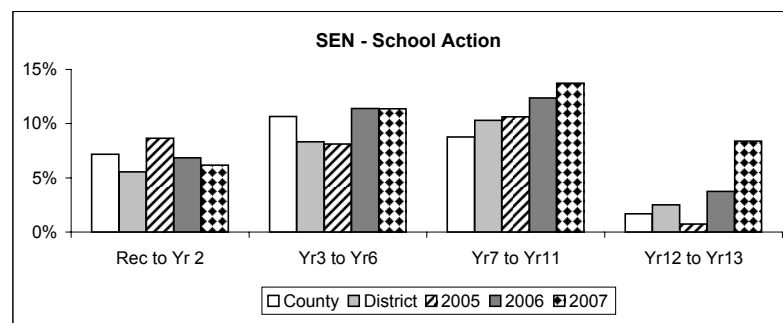
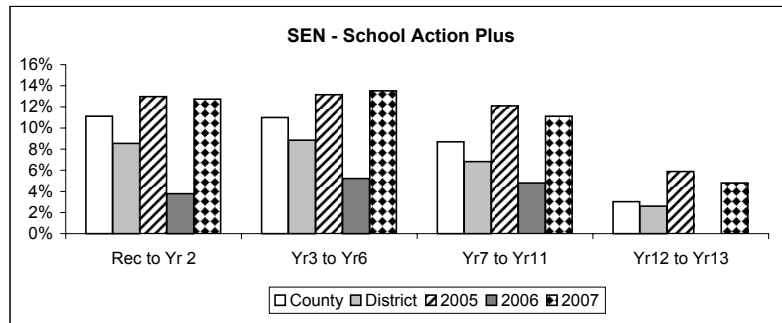
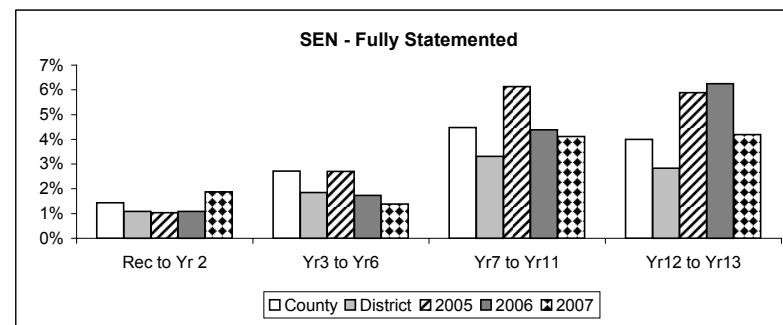
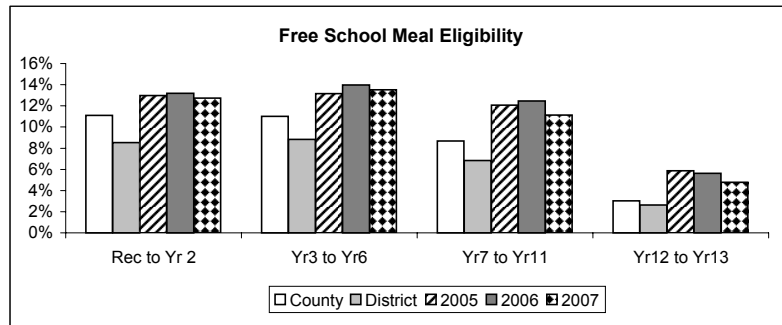
	National	County	District	2005		2006		2007		CLP -	CLP -	CLP -	Trend
	2007 (%)	2007 (%)		Number	%	Number	%	Number	%	National	County	District	
KS1 Reading Level 2B+	71.0%	76.2%	75.8%	145	69.7%	129	69.0%	136	73.9%	2.9%	-2.3%	-1.9%	
KS1 Writing Level 2B+	59.0%	65.2%	66.8%	126	60.6%	122	65.2%	120	65.2%	6.2%	0.0%	-1.6%	
KS1 Mathematics Level 2B+	74.0%	78.1%	78.8%	148	71.2%	129	69.0%	129	70.1%	-3.9%	-8.0%	-8.7%	
KS2 English Level 4+	80.0%	81.0%	80.8%	147	78.6%	163	84.5%	173	80.8%	0.8%	-0.2%	0.0%	
KS2 Mathematics Level 4+	77.0%	78.0%	76.1%	137	73.3%	150	77.7%	149	69.6%	-7.4%	-8.4%	-6.5%	
KS2 Science Level 4+	88.0%	90.0%	87.2%	163	87.2%	172	89.1%	192	89.7%	1.7%	-0.3%	2.5%	Increase
KS3 English Level 5+	74.0%	77.0%	80.1%	138	61.9%	169	78.6%	157	74.8%	0.8%	-2.2%	-5.3%	
KS3 Mathematics Level 5+	76.0%	78.0%	83.4%	165	74.0%	172	80.0%	178	84.8%	8.8%	6.8%	1.4%	Increase
KS3 Science Level 5+	73.0%	75.0%	81.8%	145	66.8%	155	72.1%	167	79.5%	6.5%	4.5%	-2.3%	Increase
KS4 5 or more A*-C Grade	62.0%	60.0%	68.8%	134	69.1%	126	70.4%	153	70.8%	8.8%	10.8%	2.0%	Increase
KS4 5 or more A*-C Grade including English & Maths	46.8%	45.8%	53.1%	72	37.1%	68	38.0%	103	47.7%	0.9%	1.9%	-5.4%	Increase
KS4 5 or more A*-G Grade	91.7%	93.2%	94.5%	180	92.8%	163	91.1%	216	100.0%	8.3%	6.8%	5.5%	
KS4 2 or more A*-C Grade in Science	50.3%	49.7%	59.2%	108	55.7%	98	54.7%	140	64.8%	14.5%	15.1%	5.6%	

Free School Meals and Special Educational Needs

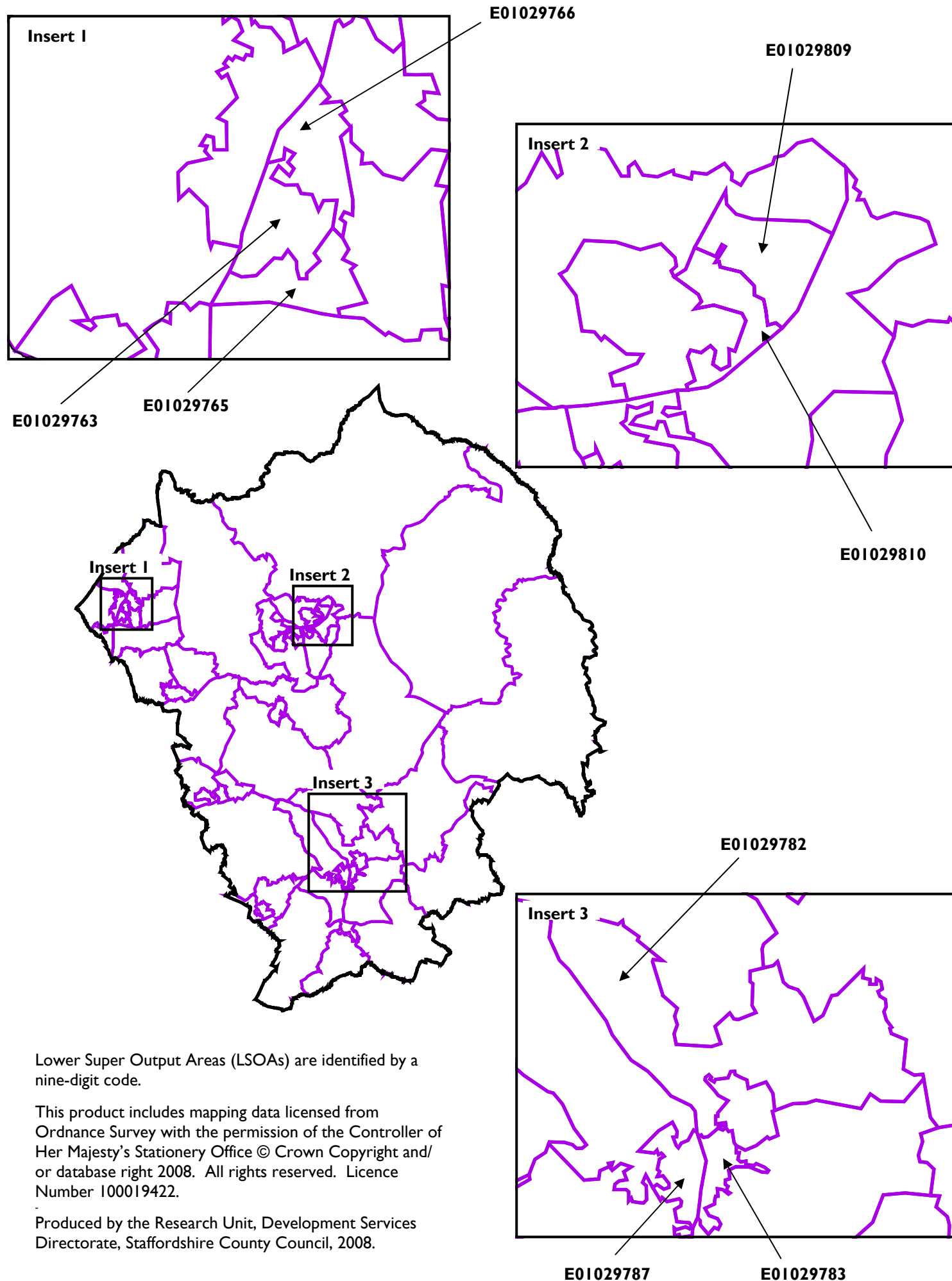
	County 2007 (%)	District 2007 (%)	2005		2006		2007		CLP - County 2007	CLP - District 2007	Trend 2005-07
			Number	%	Number	%	Number	%			
Free School Meal Eligibility											
Reception to Year 2	11.1%	8.5%	75	13.0%	73	13.2%	68	12.7%	1.6%	4.2%	
Year 3 to Year 6	11.0%	8.8%	102	13.1%	113	14.0%	107	13.5%	2.5%	4.7%	
Year 7 to Year 11	8.7%	6.8%	126	12.1%	125	12.5%	111	11.1%	2.4%	4.3%	
Year 12 to Year 13	3.0%	2.6%	8	5.9%	9	5.6%	8	4.8%	1.8%	2.2%	Decline
Special Educational Needs - Statemented											
Reception to Year 2	1.4%	1.1%	6	1.0%	6	1.1%	10	1.9%	0.4%	0.8%	Increase
Year 3 to Year 6	2.7%	1.8%	21	2.7%	14	1.7%	11	1.4%	-1.3%	-0.5%	Decline
Year 7 to Year 11	4.5%	3.3%	64	6.1%	44	4.4%	41	4.1%	-0.4%	0.8%	Decline
Year 12 to Year 13	4.0%	2.8%	8	5.9%	10	6.3%	7	4.2%	0.2%	1.4%	
Special Educational Needs - School Action Plus											
Reception to Year 2	3.3%	2.2%	12	2.1%	21	3.8%	12	2.2%	-1.0%	0.1%	
Year 3 to Year 6	5.1%	4.6%	35	4.5%	42	5.2%	40	5.1%	-0.1%	0.5%	
Year 7 to Year 11	3.9%	3.6%	28	2.7%	48	4.8%	51	5.1%	1.2%	1.5%	Increase
Year 12 to Year 13	0.6%	0.4%	0	0.0%	0	0.0%	0	0.0%	-0.6%	-0.4%	
Special Educational Needs - School Action											
Reception to Year 2	7.2%	5.6%	50	8.7%	38	6.9%	33	6.2%	-1.0%	0.6%	Decline
Year 3 to Year 6	10.7%	8.3%	63	8.1%	92	11.4%	90	11.4%	0.7%	3.1%	
Year 7 to Year 11	8.8%	10.3%	111	10.6%	124	12.4%	137	13.7%	5.0%	3.4%	Increase
Year 12 to Year 13	1.7%	2.5%	1	0.7%	6	3.8%	14	8.4%	6.7%	5.9%	Increase

The key has been designed to try and help indicate areas of difference. In this section it has been agreed that a minus figure actually represents a reduction in need. The colour coding has been set at +/-5% for Free School Meals or Special Educational Need. Therefore if the Free School Meals is 5% below county it will be coloured green and if it is 5% above county it would be coloured red.

Key
FSM 5% less than
FSM 5% greater than



**Lower Super Output Areas (LSOA) boundary in Staffordshire Moorlands District
(Selected key LSOAs for deprivation labelled)**



Lower Super Output Areas (LSOAs) are identified by a nine-digit code.

This product includes mapping data licensed from Ordnance Survey with the permission of the Controller of Her Majesty's Stationery Office © Crown Copyright and/or database right 2008. All rights reserved. Licence Number 100019422.

Produced by the Research Unit, Development Services Directorate, Staffordshire County Council, 2008.

The Staffordshire IMD 2007 Summary Card:

Staffordshire Moorlands

This card presents a summary of information from the 2007 update of the national Indices of Deprivation (IMD 2007). It is an attempt to summarise, on one piece of paper, information on deprivation in the area covered by Staffordshire Moorlands District. The key information covered here includes the overall multiple measure of deprivation, seven different domains (types) of deprivation and two indices focusing respectively on income deprivation affecting children and older people. Ten pieces of data for each of the fifty nine Lower Super Output Areas in Staffordshire Moorlands District. Five hundred and ninety bits of information on one piece of paper.

By its very nature this document presents an overview of all deprivation in Staffordshire Moorlands in 2007. Further detail on deprivation in Staffordshire Moorlands District can be found in the complementary, more detailed district reports available from the Staffordshire Observatory website. Also available are the equivalent documents for the other seven districts in Staffordshire and a County document. For further details go to: <http://www.staffordshirepartnership.org.uk/observatory/> or contact Rosanne Cororan on 01785 276538 or email Rosanne.cororan@staffordshire.gov.uk.

Background to the IMD 2007

- X The English Indices of Deprivation 2007 (ID 2007) are the Government's official measure of multiple deprivation at small area level. The 2007 Indices update information provided in the IMD 2004.
- X The IMD 2007 provides a relative ranking of areas across England according to their level of deprivation.
- X The Index of Multiple Deprivation 2007 (IMD 2007) is based on the small area geography known as Lower Super Output Areas (LSOAs). LSOAs have between 1000 and 3000 people living in them with an average population of 1500 people. In most cases, these are smaller than wards, thus allowing the identification of small pockets of deprivation.
- X The IMD brings together 37 different indicators which cover specific aspects or dimensions of deprivation: Income, Employment, Health and Disability, Education, Skills and Training, Barriers to Housing and Services, Living Environment and Crime. These are weighted and combined to create the overall IMD 2007.
- X The majority of the data underpinning the IMD 2007 represents 2005 although some data covers a number of years, for example an average of 2003-2005.

This is taken from the Guidance for Using the English Indices of Deprivation 2007 produced by Communities and Local Government:
<http://www.communities.gov.uk/documents/communities/doc/615986>

Understanding this information graphic

The dots which make up this graphic show the level of deprivation in a Lower Super Output Area (LSOA) compared to the whole of Staffordshire County. The basic rule is; more ink = higher deprivation.

- high level of deprivation
- ◐
- ◑
- low level of deprivation

The colour shading highlights where the LSOA is in the top 10% or 20% most deprived areas in England for that measure of deprivation.

- ...& in top 10% deprived in England
- ◑ ...& in top 10-20% deprived in England

The LSOAs are ranked here according to their overall, multiple deprivation score; most deprived to least deprived. The national ranking (out of 32,482) is shown in grey italics next to the symbol (where 1=most deprived and 32,482=least deprived). The deprivation domain titles have been abbreviated.

What does this information graphic tell us about deprivation in Staffordshire Moorlands District?

Several general trends can be observed from this graphic of deprivation in Staffordshire Moorlands District. Firstly, deprivation across all domains often, but by no means always, occurs in the same LSOAs. This is evident in the fact that the solid dots and coloured backgrounds cluster at the top of the list of LSOAs.

It is also evident that overall, deprivation around barriers to housing, education, employment and health are relatively higher in Staffordshire Moorlands District than for other types of deprivation. There are five LSOAs in Staffordshire Moorlands District which are in the 10% most deprived in England for barriers to housing (represented by this symbol: ◑). In contrast there are only six LSOAs in the top 10% deprived across all the other (nine) measures. Further, the income domain, and sub-domains: income deprivation affecting children and income deprivation affecting older people have very few areas in Staffordshire Moorlands District which fall in the top 20% deprived in England.

ward name	LSOA code	multiple	IMD rank	income	employment health	education housing crime	environment	children older people	ward name	LSOA code	multiple	IMD rank	income	employment health	education housing crime	environment	children older people	
Biddulph East	E01029765	●	4387	◑	◑	○	○	◑	Biddulph North	E01029768	○	19910	○	○	○	○	○	○
Biddulph East	E01029763	●	4688	◑	◑	○	○	◑	Cheddleton	E01029793	○	20413	○	○	○	○	○	○
Leek North	E01029809	●	5924	◑	◑	○	○	◑	Biddulph East	E01029764	○	20545	○	○	○	○	○	○
Leek North	E01029810	●	7575	○	○	○	○	○	Leek South	E01029813	○	20781	○	○	○	○	○	○
Cheadle North East	E01029782	●	7609	○	○	○	○	○	Hamps Valley	E01029801	○	20809	○	○	○	○	○	○
Biddulph East	E01029766	●	7760	○	○	○	○	○	Cheddleton	E01029792	○	20913	○	○	○	○	○	○
Cheadle South East	E01029783	●	8822	○	○	○	○	○	Leek East	E01029806	○	21515	○	○	○	○	○	○
Cheadle West	E01029787	●	9482	○	○	○	○	○	Checkley	E01029790	○	21626	○	○	○	○	○	○
Leek South	E01029811	●	10042	○	○	○	○	○	Forsbrook	E01029799	○	21726	○	○	○	○	○	○
Leek East	E01029804	●	10235	○	○	○	○	○	Brown Edge and Endon	E01029775	○	21966	○	○	○	○	○	○
Leek North	E01029808	●	10705	○	○	○	○	○	Alton	E01029761	○	22260	○	○	○	○	○	○
Leek South	E01029812	●	10721	○	○	○	○	○	Biddulph West	E01029773	○	22420	○	○	○	○	○	○
Biddulph West	E01029774	●	11230	○	○	○	○	○	Cheadle West	E01029786	○	22720	○	○	○	○	○	○
Leek North	E01029807	●	11749	○	○	○	○	○	Forsbrook	E01029800	○	22920	○	○	○	○	○	○
Dane	E01029797	●	11942	○	○	○	○	○	Bagnall and Stanley	E01029762	○	23073	○	○	○	○	○	○
Manifold	E01029817	●	13961	○	○	○	○	○	Cheadle South East	E01029784	○	23197	○	○	○	○	○	○
Churnet	E01029795	●	14387	○	○	○	○	○	Cellarhead	E01029779	○	23892	○	○	○	○	○	○
Caverswall	E01029778	●	15121	○	○	○	○	○	Cellarhead	E01029780	○	24147	○	○	○	○	○	○
Churnet	E01029796	●	16433	○	○	○	○	○	Biddulph North	E01029769	○	24228	○	○	○	○	○	○
Leek West	E01029814	●	16967	○	○	○	○	○	Checkley	E01029788	○	24447	○	○	○	○	○	○
Ipstones	E01029803	●	17293	○	○	○	○	○	Leek West	E01029815	○	24628	○	○	○	○	○	○
Biddulph West	E01029772	●	17345	○	○	○	○	○	Werrington	E01029819	○	24953	○	○	○	○	○	○
Forsbrook	E01029798	●	17498	○	○	○	○	○	Biddulph Moor	E01029767	○	25005	○	○	○	○	○	○
Leek East	E01029805	●	17672	○	○	○	○	○	Leek West	E01029816	○	25403	○	○	○	○	○	○
Brown Edge and Endon	E01029777	●	17706	○	○	○	○	○	Cheadle West	E01029785	○	25482	○	○	○	○	○	○
Cheddleton	E01029794	●	17933	○	○	○	○	○	Checkley	E01029791	○	27162	○	○	○	○	○	○
Biddulph South	E01029771	●	17962	○	○	○	○	○	Werrington	E01029818	○	27478	○	○	○	○	○	○
Cheadle North East	E01029781	●	18278	○	○	○	○	○	Biddulph North	E01029770	○	27608	○	○	○	○	○	○
Horton	E01029802	●	19398	○	○	○	○	○	Brown Edge and Endon	E01029776	○	30207	○	○	○	○	○	○
Checkley	E01029789	●	19512	○	○	○	○	○										

Only one LSOA is in the 10% most deprived in England for more than one domain. That is the most deprived LSOA in Staffordshire Moorlands District which is in Biddulph East ward and is in the 10% most deprived areas in England for employment deprivation and education deprivation.

There are no LSOAs in Staffordshire Moorlands District which fall into the 10% most deprived in England for either the measure of Income Deprivation Affecting Children or Income Deprivation Affecting Older People. Two LSOAs are in the 20% most deprived areas in England for Income Deprivation Affecting both children and older people. These occur in Biddulph East ward and Leek North ward.

There are clusters of LSOAs in Staffordshire Moorlands district identified as experiencing high levels of deprivation across a number of domains in and around the areas of Biddulph, Leek and Cheadle. The map on the back of this card shows the LSOA boundaries for Staffordshire Moorlands District and highlights some of the key LSOAs discussed here and shown in the graphic (left).

There are ten LSOAs in Staffordshire Moorlands district which fall into the most deprived 20% in England for the measure of Barriers to Housing. Interestingly, eight of these LSOAs score fairly low for other measures of deprivation.

Three LSOAs within Leek North ward, Caverswall ward and Leek East ward fall into the most deprived 20% in England for the Crime domain, despite scoring fairly low for other measures of deprivation.

It is worth noting that some areas in Staffordshire Moorlands District are not in the most deprived in England but are amongst the most deprived in Staffordshire. Where this happens the symbol looks like this: ●

Interestingly, the opposite also holds true in some cases where areas are not amongst the most deprived in Staffordshire but are amongst the (20%) most deprived in England. Where this happens the symbol looks like this: ◑

This demonstrates the value in using both county and national comparators.