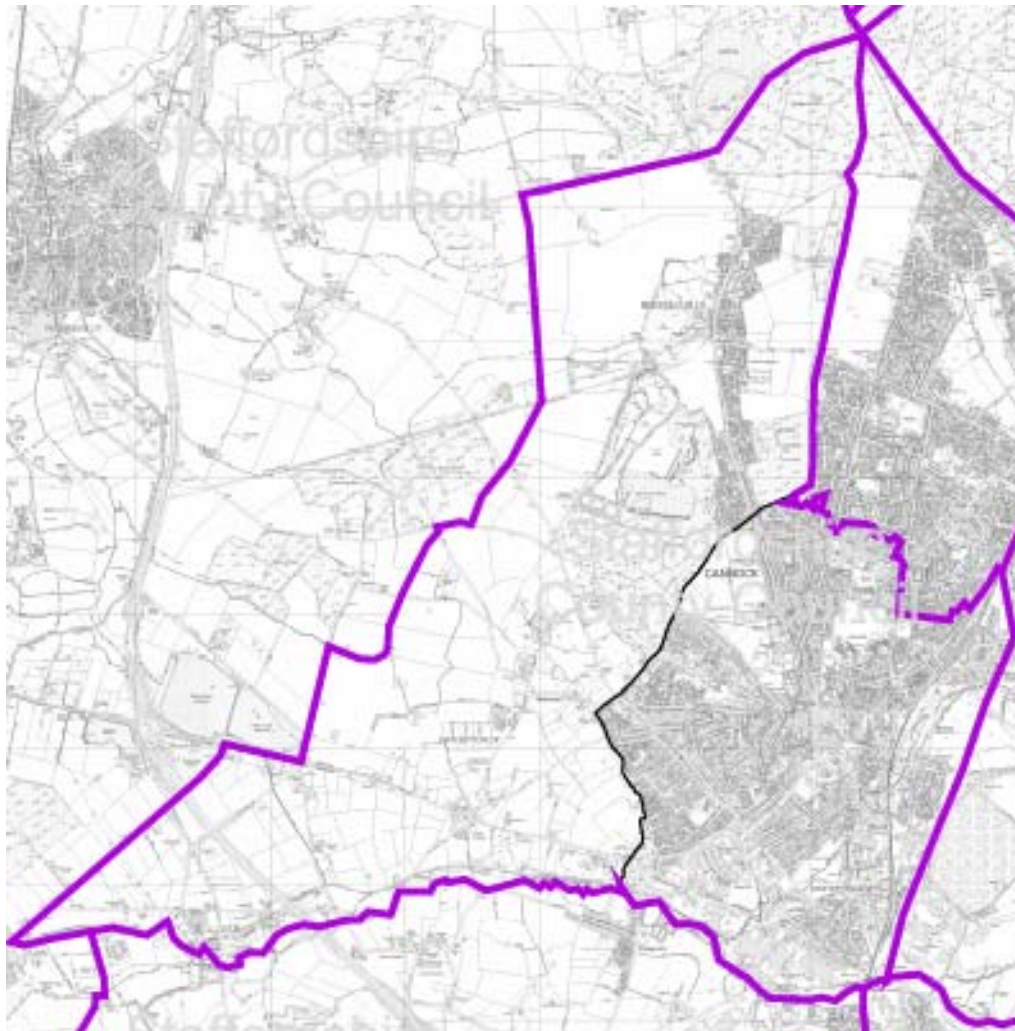


Community and Learning Partnerships

Data Profile
Cannock Chase CC3



This map is reproduced from Ordnance Survey Material with the permission of Ordnance Survey on behalf of the controller of Her Majesty's Stationery Office (C) Crown Copyright. Unauthorised reproduction infringes Crown Copyright and may lead to prosecution or civil proceedings. Staffordshire County Council 100019422. 2005 Produced by the Educational Research Analysis Unit, Children and Life long Learning Directorate, Staffordshire County Council, 2005.

Produced by Educational Research & Analysis
School Improvement Division
Staffordshire County Council

2001 Census - Social Profile

Cannock Chase High CLP

Population	Count	Percent	Index
Resident Population	22671		
Males	11026	48.6%	100
Females	11645	51.4%	100
People living in Households	22396	98.8%	101
People Living in Communal Establishment	275	1.2%	67

Age Profile	Count	Percent	Index
0-4	1333	5.9%	99
5-14	2827	12.5%	96
15	277	1.2%	96
16-19	1030	4.5%	93
20-29	2625	11.6%	91
30-44	4920	21.7%	96
45-59	4326	19.1%	101
60-74	3430	15.1%	114
75-84	1494	6.6%	118
85+	410	1.8%	93

Households	Count	Percent	Index
Total Household Spaces	9744		
Occupied Household Spaces	9552	98.0%	102
Vacant Household Spaces	180	1.8%	58
Second Residences	12	0.1%	19
Average household size	2.34		99
All Single Person Households	2689	28.2%	94
All lone pensioner households	1477	15.5%	99
All pensioner households	2494	26.1%	110
Single Parent Households with dependent children	531	5.6%	87
Single Parent Households with non-dependent children	308	3.2%	106
All households with dependent children	2784	29.1%	99
Households with no employed adult and dependent children	466	4.9%	101
All households with 1 or more persons with Limiting Long-term Illness	3988	41.8%	124

Health and Caring	Count	Percent	Index
People not in good health	2628	11.6%	128
People with a Limiting Long-term Illness	5201	22.9%	128
People of working age with Limiting Long-term Illness	2245	9.9%	121
People who provide unpaid care	2581	11.4%	115
People who provide more than 50 hours of unpaid care	607	2.7%	132

Amenity	Count	Percent	Index
Overcrowded households	462	4.8%	68
No central heating	453	4.7%	56
No WC and bath/shower	32	0.3%	69

Ethnic Group	Count	Percent	Index
White	22295	98.3%	108
Mixed	100	0.4%	34
Indian	100	0.4%	21
Pakistani	34	0.1%	10
Bagladeshi	11	0.0%	9
Other Asian	12	0.1%	11
Black	57	0.3%	11
Chinese	77	0.3%	76
Other Ethnic Groups	3	0.0%	3

Religion	Count	Percent	Index
Christian	18363	81.0%	113
Buddhist	25	0.1%	39
Hindu	42	0.2%	17
Jewish	6	0.0%	5
Muslim	44	0.2%	6
Sikh	60	0.3%	40
Other Religion	37	0.2%	56
No Religion	2580	11.4%	78
Religion not Stated	1529	6.7%	88

Dwelling Type	Count	Percent	Index
Detached	2731	28.0%	120
Semi-detached	4543	46.6%	142
Terraced	1099	11.3%	42
Purpose built flat	1014	10.4%	72
Flat in converted / shared house	104	1.1%	23
Flat in commercial building	106	1.1%	91
Caravan/Mobile home/Temporary	150	1.5%	354

Tenure	Count	Percent	Index
Owner Occupied	6390	66.9%	98
Shared Ownership	48	0.5%	77
Local Authority rented	1581	16.6%	125
Housing Association / Registered Social Landlord	786	8.2%	136
Privately rented	463	4.8%	55
Other rented	282	3.0%	92

Car Ownership	Count	Percent	Index
Households with no car	2561	26.8%	100
Households with 1 car	4060	42.5%	97
Households with 2 cars	2354	24.6%	105
Households with 3 or more cars	578	6.1%	102
Total number of cars in the area	10678		
Average no of cars per household	1.12		101

As a result of rounding some figures may not always equal the total for this area.

Census output is Crown Copyright and is reproduced with the permission of the Controller of HMSO and the Queen's Printer for Scotland

Source: 2001 Census Key Statistics

An Index has been created to compare the above area with England. The scores for England always equals 100, therefore a score of less than 100 indicates fewer people or households in that category for the area compared with England. A score over 100 indicates more people or households in that category for the area compared with England.

Produced by Research Unit, Development Services Department, Staffordshire County Council

Further details available by telephoning 01785 277359 or email mark.sproston@staffordshire.gov.uk

2001 Census - Economic Profile

Cannock Chase High CLP

Population ¹	Count	Percent	Index
All people aged 16-74	16331		
All males aged 16-74	8086	49.5%	101
All females aged 16-74	8244	50.5%	99
All people in employment	9944	60.9%	96
All males in employment	5541	68.5%	99
All females in employment	4404	53.4%	94

Economic Activity ¹	Count	Percent	Index
All people economically active	10536	64.5%	96
All people economically inactive	5795	35.5%	107

All People Economically Active	Count	Percent	Index
Employees - Full-time	6485	61.6%	101
Employees - Part-time	1955	18.6%	105
Self Employed	1261	12.0%	96
Unemployed	548	5.2%	104
Full-time Student	287	2.7%	71

All People Economically Inactive	Count	Percent	Index
Retired	2588	44.7%	109
Full-time student	442	7.6%	54
Looking after family or home	1124	19.4%	99
Permanently sick or disabled	1162	20.1%	125
Other	479	8.3%	88

Industry of Employment ²	Count	Percent	Index
Agriculture, Hunting, Forestry and Fishing	96	1.0%	65
Mining and Quarrying	21	0.2%	85
Manufacturing	2245	22.6%	152
Electricity, gas and water supply	71	0.7%	100
Construction	989	9.9%	147
Wholesale and Retail trade	1848	18.6%	110
Hotels and Catering	472	4.7%	100
Transport, storage and communication	655	6.6%	93
Financial, Real Estate and Business Activity	1127	11.3%	63
Public Administration and Defence	519	5.2%	92
Education	659	6.6%	86
Health and Social Work	894	9.0%	84
Other	348	3.5%	67

Qualifications ¹	Count	Percent	Index
No Qualifications	6163	37.7%	131
Level 1 Qualifications	2972	18.2%	109
Level 2 Qualifications	3074	18.8%	97
Level 3 Qualifications	922	5.6%	68
Level 4 or 5 Qualifications	1900	11.6%	58
Other Qualification / Level Unknown	1300	8.0%	115

Unemployed ¹	Count	Percent	Index
All unemployed	548		
Aged 16-24	160	29.2%	114
Aged 50+	103	18.8%	101
Long-term Unemployed	176	32.1%	106

Occupation Groups ²	Count	Percent	Index
Managers and Senior Officials	1400	14.1%	92
Professional	744	7.5%	67
Assoc Professional and technical	1094	11.0%	80
Administrative and Secretarial	1192	12.0%	90
Skilled Trade	1480	14.9%	129
Personal Services	643	6.5%	94
Sales and Customer Service	785	7.9%	103
Process, plant and machine operatives	1249	12.6%	149
Elementary occupations	1356	13.6%	116

Socio-Economic Class ¹	Count	Percent	Index
Large Employers and Higher Managerial	443	2.7%	77
Higher Professional	414	2.5%	50
Lower Managerial and Professional	2636	16.1%	86
Intermediate	1357	8.3%	88
Small Employers and own account workers	1205	7.4%	106
Lower Supervisory and Technical	1344	8.2%	116
Semi-routine	2257	13.8%	119
Routine	1911	11.7%	130
Never worked	402	2.5%	91
Long-term unemployed	176	1.1%	106
Full-time Student	715	4.4%	62
Not Classified	3471	21.3%	120

Hours Worked (Week) ²	Count	Percent	Index
Males part-time < 15 hours	129	2.3%	67
Males part-time 16-30 hours	273	4.9%	80
Males full-time 31-48 hours	3645	65.8%	99
Males full-time > 49 hours	1494	27.0%	111
Females part-time < 15 hours	675	15.3%	109
Females part-time 16-30 hours	1317	29.9%	106
Females full-time 31-48 hours	2155	48.9%	96
Females full-time >49 hours	257	5.8%	84

Travel to Work ²	Count	Percent	Index
Work mainly from home	805	8.1%	88
Train, Light Rail, Tram, Metro, Underground	119	1.2%	16
Bus	426	4.3%	57
Motorcycle	92	0.9%	83
Car (as driver or passenger)	7123	71.6%	117
Taxi	39	0.4%	76
Bicycle	161	1.6%	57
Walk	1145	11.5%	115
Other	39	0.4%	84

Note: 1 = People aged 16-74
2 = People Aged 16-74 in employment

As a result of rounding some figures may not always equal the total for this area.

Census output is Crown Copyright and is reproduced with the permission of the Controller of HMSO and the Queen's Printer for Scotland

Source: 2001 Census Key Statistics

An Index has been created to compare the above area with England. The scores for England always equals 100, therefore a score of less than 100 indicates fewer people in that category for the area compared with England. A score over 100 indicates more people in that category for the area compared with England.

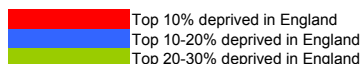
Produced by Research Unit, Development Services Department, Staffordshire County Council

Further details available by telephoning 01785 277359 or email mark.sproston@staffordshire.gov.uk

Indices of Multiple Deprivation 2007

Understanding this information

The colour shading highlights where the LSOA is in the top 10%, 20% or 30% most deprived areas in England for that measure of Deprivation.



The LSOAs are ranked here according to their overall multiple deprivation score: most deprived to least deprived. The national ranking (out of 32,482) is shown in the top table, where 1=most deprived and 32,482=least deprived. The bottom table replicates the information but putting the ranking into a percentage, so that it can be seen where the LSOA falls within the whole country. The deprivation domain titles have been abbreviated.

Ward Name	LOWERSOA	IOMD	Income	Employment	Health	Education	Housing	Crime	Living Environment
Cannock North	E01029356	5750	5055	4710	6937	2347	6123	18315	24122
Cannock South	E01029359	6283	6162	5043	4980	6423	9077	15411	8819
Cannock South	E01029362	6986	4436	6496	5393	6010	17484	12115	17978
Cannock North	E01029355	7264	7355	4804	5623	5489	13097	15187	18273
Cannock South	E01029360	9514	11498	8550	8764	9463	19811	4774	10043
Cannock South	E01029361	9695	9899	7627	8082	6728	13594	17130	17017
Huntington and Hatherton	E01029648	10027	9259	7250	13862	5358	6715	24925	27636
Cannock East	E01029353	10391	11416	7413	8733	8961	15419	12562	18117
Cannock South	E01029363	10726	12553	6933	8223	7032	20076	12381	26562
Huntington and Hatherton	E01029647	11131	12709	13421	17581	8188	2242	8262	24298
Cannock West	E01029367	12155	12096	8732	10523	12738	16292	17621	13224
Huntington and Hatherton	E01029646	13977	11177	10855	13616	10364	13365	23414	27896
Cannock West	E01029365	16318	15777	14686	12552	15968	24324	8871	20605
Cannock West	E01029364	22142	26356	20977	16551	23891	22844	6213	21640
Cannock West	E01029366	29958	30843	22649	22815	25619	22988	29034	31130

Ward Name	LOWERSOA	IOMD	Income	Employment	Health	Education	Housing	Crime	Living Environment
Cannock North	E01029356	17.7%	15.6%	14.5%	21.4%	7.2%	18.9%	56.4%	74.3%
Cannock South	E01029359	19.3%	19.0%	15.5%	15.3%	19.8%	27.9%	47.4%	27.2%
Cannock South	E01029362	21.5%	13.7%	20.0%	16.6%	18.5%	53.8%	37.3%	55.3%
Cannock North	E01029355	22.4%	22.6%	14.8%	17.3%	16.9%	40.3%	46.8%	56.3%
Cannock South	E01029360	29.3%	35.4%	26.3%	27.0%	29.1%	61.0%	14.7%	30.9%
Cannock South	E01029361	29.8%	30.5%	23.5%	24.9%	20.7%	41.9%	52.7%	52.4%
Huntington and Hatherton	E01029648	30.9%	28.5%	22.3%	42.7%	16.5%	20.7%	76.7%	85.1%
Cannock East	E01029353	32.0%	35.1%	22.8%	26.9%	27.6%	47.5%	38.7%	55.8%
Cannock South	E01029363	33.0%	38.6%	21.3%	25.3%	21.6%	61.8%	38.1%	81.8%
Huntington and Hatherton	E01029647	34.3%	39.1%	41.3%	54.1%	25.2%	6.9%	25.4%	74.8%
Cannock West	E01029367	37.4%	37.2%	26.9%	32.4%	39.2%	50.2%	54.2%	40.7%
Huntington and Hatherton	E01029646	43.0%	34.4%	33.4%	41.9%	31.9%	41.1%	72.1%	85.9%
Cannock West	E01029365	50.2%	48.6%	45.2%	38.6%	49.2%	74.9%	27.3%	63.4%
Cannock West	E01029364	68.2%	81.1%	64.6%	51.0%	73.6%	70.3%	19.1%	66.6%
Cannock West	E01029366	92.2%	95.0%	69.7%	70.2%	78.9%	70.8%	89.4%	95.8%

Background to the Indices of Multiple Deprivation 2007

The English Indices of Deprivation 2007 (ID 2007) are the Government's official measure of multiple deprivation at small area level. The 2007 Indices update information provided in the IMD 2004.

The IMD 2007 provides a relative ranking of areas across England according to their level of deprivation.

The Index of Multiple Deprivation 2007 (IMD 2007) is based on the small area geography known as Lower Super Output Areas (LSOAs). LSOAs have between 1000 and 3000 people living in them with an average population of 1500 people. In most cases, these are smaller than wards, thus allowing the identification of small pockets of deprivation.

The IMD brings together 37 different indicators which cover specific aspects or dimensions of deprivation: Income, Employment, Health and Disability, Education, Skills and Training, Barriers to Housing and Services, Living Environment and Crime. These are weighted and combined to create the overall IMD 2007.

The majority of the data underpinning the IMD 2007 represents 2005 although some data covers a number of years, for example an average of 2003-2005.

This is taken from the Guidance for Using the English Indices of Deprivation 2007 produced by Communities and Local Government:
<http://www.communities.gov.uk/documents/communities/doc/615986>

Foundation Stage Profile Attainment

The Foundation Stage Profile allocates a point score for each child in 13 areas of learning. The results below indicate the number and percentage of children who have achieved a score of 6 or above. This threshold has been chosen as it is the expected level of attainment as stipulated by the Department for Children, Schools and Families.

	National	County	District	2005		2006		2007		CLP -	CLP -	CLP -	Trend 2005-07
	2007 (%)	2007 (%)		Number	%	Number	%	Number	%	National 2007	County 2007	District 2007	
Personal, social and emotional development													
Dispositions and attitudes	87.0%	90.9%	88.1%	248	87.0%	190	80.5%	215	89.2%	2.2%	-1.7%	1.1%	
Social development	80.0%	86.4%	82.2%	242	84.9%	186	78.8%	195	80.9%	0.9%	-5.5%	-1.3%	
Emotional development	76.0%	84.4%	80.5%	241	84.6%	163	69.1%	200	83.0%	7.0%	-1.4%	2.5%	
Communication, language and literacy													
Language for communication and thinking	78.0%	85.0%	82.9%	229	80.4%	170	72.0%	197	81.7%	3.7%	-3.3%	-1.2%	
Linking sounds and letters	65.0%	72.0%	68.8%	171	60.0%	152	64.4%	179	74.3%	9.3%	2.3%	5.5%	Increase
Reading	69.0%	78.6%	77.3%	223	78.2%	161	68.2%	193	80.1%	11.1%	1.5%	2.8%	
Writing	58.0%	70.1%	65.4%	184	64.6%	135	57.2%	176	73.0%	15.0%	2.9%	7.6%	
Mathematical development													
Calculating	87.0%	90.7%	91.3%	246	86.3%	203	86.0%	215	89.2%	2.2%	-1.5%	-2.1%	
Numbers as labels and for counting	70.0%	78.6%	74.5%	225	78.9%	169	71.6%	190	78.8%	8.8%	0.2%	4.3%	
Shapes, space and measures	80.0%	88.4%	87.3%	254	89.1%	187	79.2%	222	92.1%	12.1%	3.7%	4.8%	
Knowledge and understanding of the world	77.0%	85.8%	84.1%	244	85.3%	198	83.9%	223	92.5%	15.5%	6.7%	8.4%	
Physical development	88.0%	92.1%	91.7%	260	90.9%	187	79.2%	219	90.9%	2.9%	-1.2%	-0.8%	
Creative development	78.0%	84.7%	82.0%	245	85.7%	190	80.5%	213	88.4%	10.4%	3.7%	6.4%	
78 points and 6 or above in PSE and CLL Scales	45.0%	57.5%	53.5%	143	50.0%	108	45.8%	142	58.9%	13.9%	1.4%	5.4%	

Key Stage One to Four Attainment

The National Curriculum for Key Stage One through to Key Stage Four runs through Year 1 to Year 11. The expected level of attainment for Key Stage One is Level 2B or above, Key Stage Two is Level 4 or above, Key Stage 3 is Level 5 or above and at Key Stage 4 the new level of expected attainment is 5+ A*-C including GCSE English and Mathematics. The results below indicate the number and percentage of children who have achieved these thresholds. These thresholds have been chosen as it is the expected level of attainment as stipulated by the Department for Children, Schools and Families.

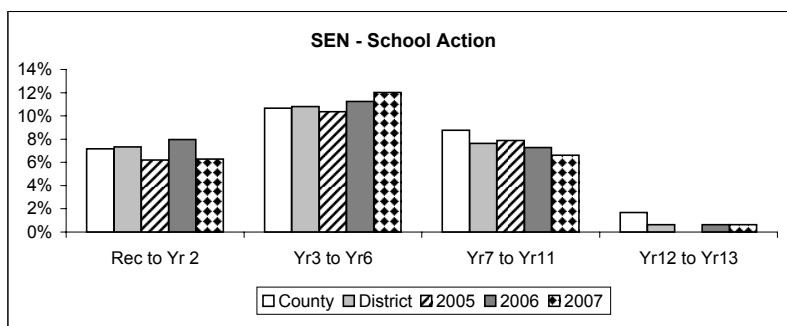
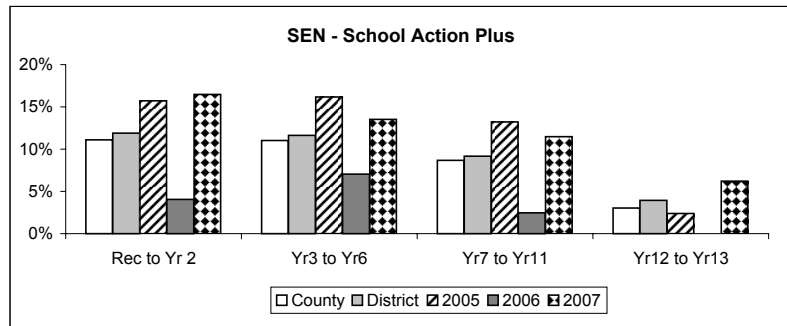
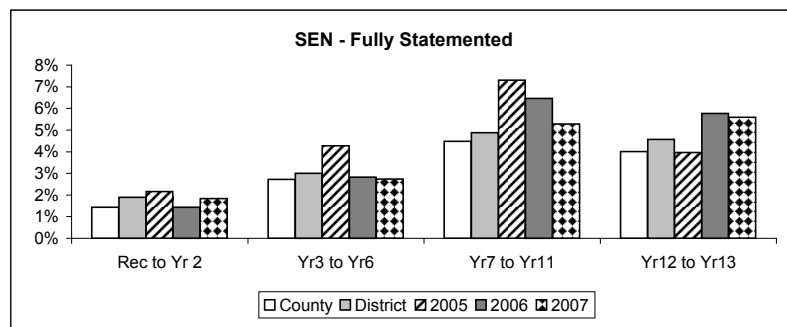
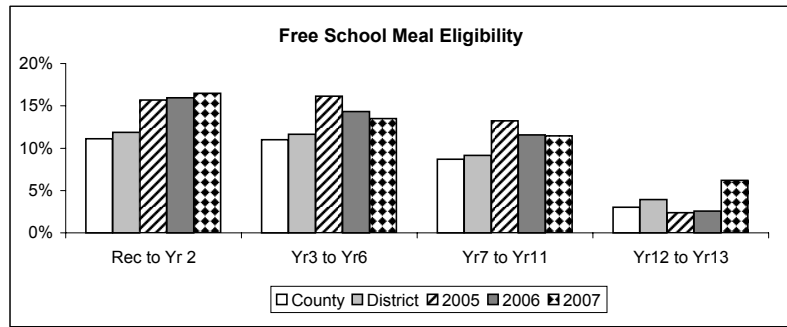
	National	County	District	2005		2006		2007		CLP -	CLP -	CLP -	Trend 2005-07
	2007 (%)	2007 (%)		Number	%	Number	%	Number	%	National	County	District	
KS1 Reading Level 2B+	71.0%	76.2%	73.1%	198	69.5%	154	68.1%	180	67.7%	-3.3%	-8.5%	-5.4%	Decline
KS1 Writing Level 2B+	59.0%	65.2%	60.7%	173	60.7%	139	61.5%	144	54.1%	-4.9%	-11.1%	-6.6%	
KS1 Mathematics Level 2B+	74.0%	78.1%	76.6%	208	73.0%	162	71.7%	197	74.1%	0.1%	-4.0%	-2.5%	
KS2 English Level 4+	80.0%	81.0%	75.5%	230	75.2%	209	78.6%	209	66.1%	-13.9%	-14.9%	-9.4%	
KS2 Mathematics Level 4+	77.0%	78.0%	78.0%	222	72.8%	188	70.7%	206	74.6%	-2.4%	-3.4%	-3.4%	
KS2 Science Level 4+	88.0%	90.0%	88.7%	262	85.6%	232	87.2%	269	85.4%	-2.6%	-4.6%	-3.3%	
KS3 English Level 5+	74.0%	77.0%	75.9%	156	65.0%	165	60.4%	254	73.0%	-1.0%	-4.0%	-2.9%	
KS3 Mathematics Level 5+	76.0%	78.0%	74.3%	167	70.2%	210	76.6%	244	70.3%	-5.7%	-7.7%	-4.0%	
KS3 Science Level 5+	73.0%	75.0%	72.4%	158	66.1%	188	68.6%	273	73.6%	0.6%	-1.4%	1.2%	Increase
KS4 5 or more A*-C Grade	62.0%	60.0%	55.8%	104	51.0%	112	53.6%	164	59.9%	-2.1%	-0.1%	4.1%	Increase
KS4 5 or more A*-C Grade including English & Maths	46.8%	45.8%	37.2%	77	37.7%	74	35.4%	113	41.2%	-5.6%	-4.6%	4.0%	
KS4 5 or more A*-G Grade	91.7%	93.2%	92.4%	183	89.7%	193	92.3%	274	100.0%	8.3%	6.8%	7.6%	Increase
KS4 2 or more A*-C Grade in Science	50.3%	49.7%	45.8%	100	49.0%	97	46.4%	134	48.9%	-1.4%	-0.8%	3.1%	

Source: Educational Research Analysis.

Free School Meals and Special Educational Needs

	County		District		Number		%		Number		%		Number		%	
Free School Meal Eligibility																
Reception to Year 2	11.1%	11.9%	109	15.7%	122	15.9%	126	16.5%	5.4%	4.6%	Increase					
Year 3 to Year 6	11.0%	11.6%	159	16.2%	167	14.3%	153	13.5%	2.5%	1.9%	Decline					
Year 7 to Year 11	8.7%	9.1%	163	13.2%	154	11.6%	163	11.5%	2.8%	2.3%	Decline					
Year 12 to Year 13	3.0%	3.9%	3	2.4%	4	2.6%	10	6.2%	3.2%	2.3%	Increase					
Special Educational Needs - Statemented																
Reception to Year 2	1.4%	1.9%	15	2.2%	11	1.4%	14	1.8%	0.4%	-0.1%	Decline					
Year 3 to Year 6	2.7%	3.0%	42	4.3%	33	2.8%	31	2.7%	0.0%	-0.3%	Decline					
Year 7 to Year 11	4.5%	4.9%	90	7.3%	86	6.5%	75	5.3%	0.8%	0.4%	Decline					
Year 12 to Year 13	4.0%	4.6%	5	4.0%	9	5.8%	9	5.6%	1.6%	1.0%	Decline					
Special Educational Needs - School Action Plus																
Reception to Year 2	3.3%	3.7%	19	2.7%	31	4.1%	44	5.8%	2.5%	2.0%	Increase					
Year 3 to Year 6	5.1%	6.9%	54	5.5%	82	7.0%	87	7.7%	2.5%	0.8%	Increase					
Year 7 to Year 11	3.9%	3.8%	30	2.4%	33	2.5%	47	3.3%	-0.6%	-0.5%	Increase					
Year 12 to Year 13	0.6%	0.3%	0	0.0%	0	0.0%	0	0.0%	-0.6%	-0.3%	Increase					
Special Educational Needs - School Action																
Reception to Year 2	7.2%	7.3%	43	6.2%	61	8.0%	48	6.3%	-0.9%	-1.0%	Increase					
Year 3 to Year 6	10.7%	10.8%	102	10.4%	131	11.2%	136	12.0%	1.4%	1.2%	Increase					
Year 7 to Year 11	8.8%	7.6%	97	7.9%	97	7.3%	94	6.6%	-2.2%	-1.0%	Decline					
Year 12 to Year 13	1.7%	0.6%	0	0.0%	1	0.6%	1	0.6%	-1.0%	0.0%	Decline					

Key
 FSM 5% less than
 FSM 5% greater than



The Staffordshire IMD 2007 Summary Card:

Cannock Chase

This card presents a summary of information from the 2007 update of the national Indices of Deprivation (IMD 2007). It is an attempt to summarise, on one piece of paper, information on deprivation in the area covered by Cannock Chase District. The key information covered here includes the overall multiple measure of deprivation, seven different domains (types) of deprivation and two indices focusing respectively on income deprivation affecting children and older people. Ten pieces of data for each of the sixty Lower Super Output Areas in Cannock Chase District. Six hundred bits of information on one piece of paper.

By its very nature this document presents an overview of all deprivation in Cannock Chase in 2007. Further detail on deprivation in Cannock Chase District can be found in the complementary, more detailed district reports available from the Staffordshire Observatory website. Also available are the equivalent documents for the other seven districts in Staffordshire and a County document. For further details go to: <http://www.staffordshirepartnership.org.uk/observatory/> or contact Rosanne Cororan on 01785 276538 or email Rosanne.cororan@staffordshire.gov.uk.

Background to the IMD 2007

- The English Indices of Deprivation 2007 (ID 2007) are the Government's official measure of multiple deprivation at small area level. The 2007 Indices update information provided in the IMD 2004.
- The IMD 2007 provides a relative ranking of areas across England according to their level of deprivation.
- The Index of Multiple Deprivation 2007 (IMD 2007) is based on the small area geography known as Lower Super Output Areas (LSOAs). LSOAs have between 1000 and 3000 people living in them with an average population of 1500 people. In most cases, these are smaller than wards, thus allowing the identification of small pockets of deprivation.
- The IMD brings together 37 different indicators which cover specific aspects or dimensions of deprivation: Income, Employment, Health and Disability, Education, Skills and Training, Barriers to Housing and Services, Living Environment and Crime. These are weighted and combined to create the overall IMD 2007.
- The majority of the data underpinning the IMD 2007 represents 2005 although some data covers a number of years, for example an average of 2003-2005.

This is taken from the Guidance for Using the English Indices of Deprivation 2007 produced by Communities and Local Government:
<http://www.communities.gov.uk/documents/communities/doc/615986>



